

## ACT20X-HAI-SAO-S

**Weidmüller Interface GmbH & Co. KG**  
 Klingenbergstraße 26  
 D-32758 Detmold  
 Germany

www.weidmueller.com

### Product image, Similar to illustration



The ACT20X-HAI-SAO/2HAI-2SAO HART-protocol transparent current-supply isolators are capable of transmitting 4...20 mA signals from Ex zone 0 into the safe zone. External sensors can be supplied with power through the device.

Integrated alarm contacts issue an alert in the event of a malfunction; this makes troubleshooting easier and increases system availability.

The rail mounted current-supply isolators are optionally available in one- or two-channel versions.

With 11 mm width per channel, the devices need little space in the electrical cabinet.

### General ordering data

Version	EX signal isolating converter, Ex-input: 4 - 20 mA, Safe-output: 4-20mA, HART®, 1-channel
Order No.	<a href="#">8965430000</a>
Type	ACT20X-HAI-SAO-S
GTIN (EAN)	4032248785049
Qty.	1 pc(s).

## ACT20X-HAI-SAO-S

**Weidmüller Interface GmbH & Co. KG**

Klingenbergstraße 26

D-32758 Detmold

Germany

www.weidmueller.com

## Technical data

### Dimensions and weights

Depth	113.6 mm	Depth (inches)	4.472 inch
Height	119.2 mm	Height (inches)	4.693 inch
Width	22.5 mm	Width (inches)	0.886 inch
Net weight	186 g		

### Temperatures

Storage temperature	-20 °C...85 °C	Operating temperature	-20 °C...60 °C
Humidity	0...95 % (no condensation)		

### Probability of failure

SIL PAPER	SIL certificate	SIL in compliance with IEC 61508	2
MTBF	177 a	SFF	80 %

### Assembling

Mounting position	horizontal or vertical	Rail	TS 35
Type of mounting	Snap mounting support rail		

### Input EX

Input current	4...20mA	Output signal in case of wire break	<1 mA
Residual ripple (current loop)	<7.5 mV <sub>eff</sub>	Sensor supply	> 16 V DC
Type	intrinsically safe circuit, active (as current source) or passive (as current sink)	Voltage drop not powered	<6 V
Voltage drop powered	<4.5 V		

### Output

Load impedance current	≤ 600 Ω	Load stability	≤ 0.01 % of end value / 100 Ω
Output current	4...20 mA	Output signal limit	<28 mA
Type	active (as current source) or passive (as current sink)		

### Digital output

Max. switching frequency	0 Hz
--------------------------	------

### Alarm output

Alarm function	Signal limit exceeded, Line interruption at the input, No supply voltage, Device error	Continuous current	≤ 0.5 A AC / 0.3 A DC (safe zone), ≤ 0.5 A AC / 1 A DC (zone 2)
Nominal switching voltage	≤ 125 V AC / 110 V DC (safe area) ≤ 32 V AC / 32 V DC (zone 2)	Power rating	≤ 62.5 VA / 32 W (safe area) ≤ 16 VA / 32 W (Zone 2)
Type	Status relay, 1 NC (voltage-free)		

## ACT20X-HAI-SAO-S

**Weidmüller Interface GmbH & Co. KG**

Klingenbergstraße 26

D-32758 Detmold

Germany

www.weidmueller.com

## Technical data

### General specifications

Accuracy	<0.1% span	Configuration	With FDT/DTM software, Requires configuration adapter 8978580000 CBX200 USB
HART® transparency supported	Yes	Humidity	0...95 % (no condensation)
Operating altitude	≤ 2000 m	Power consumption	≤ 1.0 W
Protection degree	IP20	Step response time	≤ 5 ms
Temperature coefficient	<0.01% of span/°C (TU)	Type of connection	Screw connection
Type of signal forwarding according to HART®	unchanged	Voltage supply	19.2...31.2 V DC

### Insulation coordination

EMC standards	EN 61326-1	Insulation voltage	2.6 kV (input / output)
Pollution severity	2	Rated voltage	300 V
Standards	EN 61010-1	Surge voltage category	II

### Data for Ex applications (ATEX)

Current I <sub>0</sub>	Current loop 93 mA / externally 10 mA	Installation location	Device installed in safe area, zone 2
Marking	II (1) G [Ex ia Ga] IIC/IIB/IIA, II (1) D [Ex ia Da] IIIC, I (M1) [Ex ia Ma] I	Power P <sub>0</sub>	Current loop 0.65 W / externally 0.1 W
Voltage U <sub>0</sub>	Current loop 28 V / externally 10 V		

### Safety-related basic specifications

Description of the "safe state"	analogue Output ≤ 3.6 mA or output ≥ 21 mA	Device type	A
T <sub>proof</sub>	5 a	Total failure rate for safe detected failures (λ <sub>SD</sub> )	0 FIT
Hardware fault tolerance (HFT)	0	Safety category	SIL 2
Safe Failure Fraction (SFF)	80 %	Mean Time To Repair (MTTR)	24 h
Total failure rate for safe undetected failures (λ <sub>SU</sub> )	0 FIT	Total failure rate for dangerous detected failures (λ <sub>DD</sub> )	173 FIT
Total failure rate for dangerous undetected failures (λ <sub>DU</sub> )	41 FIT	Probability of outage PFH	4.1 x 10 <sup>-8</sup> h <sup>-1</sup>
Demand mode	High		

### Safety-related specifications Low demand mode

Average Probability of Failure on Demand (PFD <sub>avg</sub> )	1.92 x 10 <sup>-4</sup> (T <sub>proof</sub> = 1 year), 3.67 x 10 <sup>-4</sup> (T <sub>proof</sub> = 2 years), 8.92 x 10 <sup>-4</sup> (T <sub>proof</sub> = 5 years), additional data in the safety manual
--	---

### Connection data

Type of connection	Screw connection	Tightening torque, min.	0.4 Nm
Tightening torque, max.	0.6 Nm	Clamping range, rated connection	2.5 mm <sup>2</sup>
Clamping range, min.	0.25 mm <sup>2</sup>	Clamping range, max.	2.5 mm <sup>2</sup>
Wire connection cross section AWG, min.	AWG 26	Wire connection cross section AWG, max.	AWG 12

Creation date November 26, 2024 11:55:41 AM CET

**ACT20X-HAI-SAO-S**

**Weidmüller Interface GmbH & Co. KG**  
Klingenbergstraße 26  
D-32758 Detmold  
Germany

[www.weidmueller.com](http://www.weidmueller.com)

**Technical data****Guarantee**

Time interval 3 years

**Classifications**

ETIM 6.0	EC002653	ETIM 7.0	EC002653
ETIM 8.0	EC002653	ETIM 9.0	EC002653
ECLASS 9.0	27-21-01-20	ECLASS 9.1	27-21-01-20
ECLASS 10.0	27-21-01-20	ECLASS 11.0	27-21-01-20
ECLASS 12.0	27-21-01-20	ECLASS 13.0	27-21-01-20
ECLASS 14.0	27-21-01-20		

**ACT20X-HAI-SAO-S**

**Weidmüller Interface GmbH & Co. KG**  
 Klingenbergstraße 26  
 D-32758 Detmold  
 Germany

www.weidmueller.com

**Technical data**

**Tender specification sheets**

Long specification

Short specification

**Ex supply isolator for standard DC current signals, 2-channel, HART transparent 2-channel supply isolator in 22.5 mm width with external power supply, for transmitting and isolating 4...20 mA standard signals from Ex Zones 0,1,2 to the safe zones. The component has an active and passive input. External sensors can be supplied with > 15 VDC. The 4...20 mA output circuit can be operated either passively or actively. Status and error messages are available via a relay contact (NO).**  
 The component can be configured using standard FDT/DTM software.  
**Add-on housing for TS35 rail mounting**  
**Dimensions: L/W/H 119.2/ 22.5/ 113.6**  
**Screw connection/ Nominal cross-section 2.5 mm<sup>2</sup>**  
**Protection degree: IP 20**  
**Input 4...20 mA**  
 >  
**15 V DC sensor supply**  
**Output**  
 ac-  
 tive  
 mA  
 passive 4...20 mA current loop max. 26 V DC  
**Load <**  
**600 Ohm**  
**Accuracy <**  
**0,1 % v.E**  
**Temperature coefficient < 0,01% v.E./°C (Tu)**  
**Alarm output relay 1 NO contact**  
**250**  
**V AC / 30 V DC @ 2A safe zone**  
**32**  
**V AC @ 0.5 A/ 32 VDC @ 1 A Zone 2**  
**Auxiliary power**  
**19...31.2 V DC**  
**Power dissipation 1.8 W**  
**Ambient temperature range 20 °C...+60 °C**

4...20

**ACT20X-HAI-SAO-S****Weidmüller Interface GmbH & Co. KG**

Klingenbergstraße 26

D-32758 Detmold

Germany

www.weidmueller.com

**Technical data****Environmental Product Compliance**

RoHS Compliance Status	Compliant with exemption
RoHS Exemption (if applicable/known)	7a, 7cl
REACH SVHC	Lead 7439-92-1
SCIP	2f6dd957-421a-46db-a0c2-cf1609156924

**Approvals**

Approvals



Approvals	DNVGL;
ROHS	Conform
UL File Number Search	UL Website
Certificate no. (cULus)	E337701

**Downloads**

Approval/Certificate/Document of Conformity	<a href="#">Certification SIL</a> <a href="#">Certification DNV_GL</a> <a href="#">Certification ATEX</a> <a href="#">Certification IECEx</a> <a href="#">Certification UL</a> <a href="#">UL certification for canada</a> <a href="#">Declaration of Conformity</a>
Engineering Data	<a href="#">CAD data – STEP</a>
Software	<a href="#">WI-Manager, DTM-Library for online installation</a> <a href="#">Release notes for Weidmueller FDT-DTM Software version</a>
User Documentation	<a href="#">Instruction sheet</a> <a href="#">Safety Manual for SIL application</a> <a href="#">Handbuch ACT20X- Serie, deutsch</a> <a href="#">Manual ACT20X- series, english</a> <a href="#">20210120 Security Advisory - WI-Manager affected by MundM Software fdtCONTAINER vulnerability</a>
Catalogues	<a href="#">Catalogues in PDF-format</a>
Brochures	

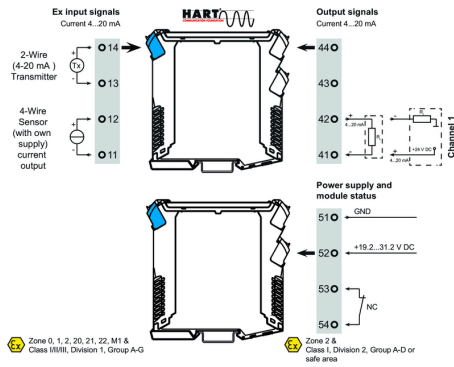
**ACT20X-HAI-SAO-S**

**Weidmüller Interface GmbH & Co. KG**  
 Klingenbergstraße 26  
 D-32758 Detmold  
 Germany

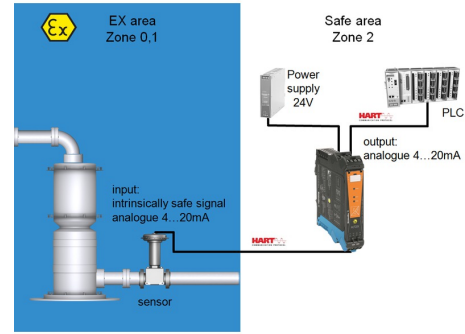
www.weidmueller.com

**Drawings**

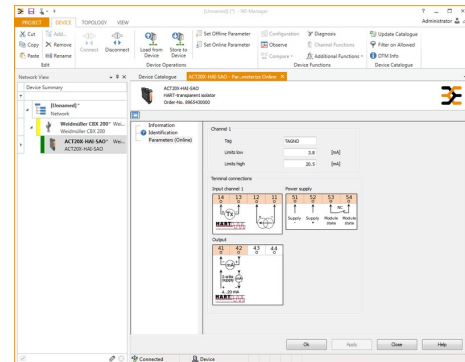
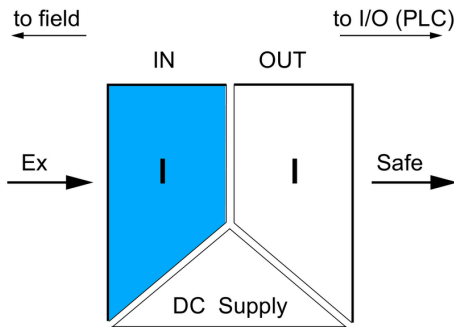
**Connection diagram**



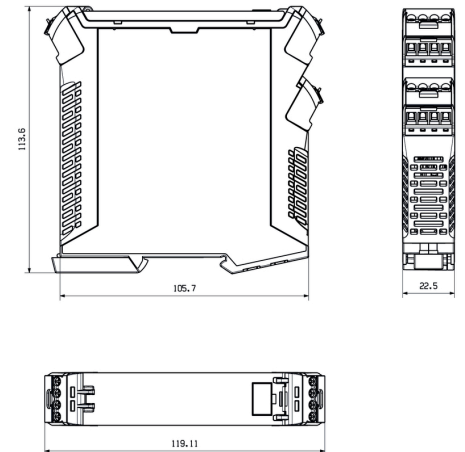
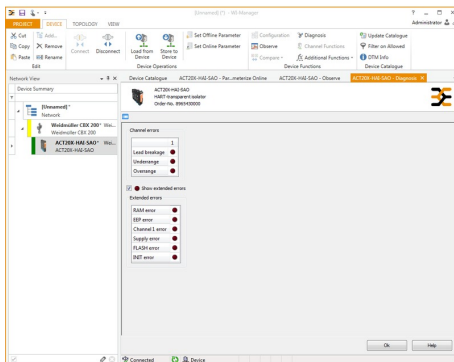
**Application**



**Block diagram**



**Dimensioned drawing**



**Data sheet**

**ACT20X-HAI-SAO-S**

**Weidmüller Interface GmbH & Co. KG**  
Klingenbergstraße 26  
D-32758 Detmold  
Germany

[www.weidmueller.com](http://www.weidmueller.com)

**Drawings**



Removable terminals with coding