

LED-HWB-24V-60W

60W Indoor LED Hardwire Box, 24V
Cabinet, Cove & Display

Job Information		
Project Name		Type
Location		
Quantity		Date
Contact/Phone		
Notes		

Features

Features & Benefits

- Class II power supply.
- Short-circuit protection.
- Over-current protection.
- Over-voltage protection.
- Open-circuit protection.
- Constant voltage.

AC Input Details

- AC input voltage range: 100-240V.
- AC input current: 1500mA.
- Input frequency range: 50/60Hz.
- No load power consumption: <0.5W.
- Leakage current: <0.25mA.

DC Output Details

- DC voltage: 24V.
- DC current: 2500mA.
- Working efficiency:
 - * > 72% @ 100V AC.
 - * > 78% @ 220V AC.

Environmental Requirements

- Working temperature: 0-40%
- Operating humidity: 5-90% RH.
- Storage humidity: 5-90% RH.
- Suitable for indoor use only.

Linkage

- The LED driver is equipped with a 2.1 DC jack and 55" of 18AWG SPT cord on the output side for linking 24V LED tape and strip lights.
- Provided with push-in wire connectors for fast and easy wiring.

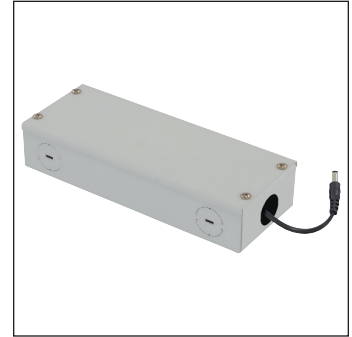
Construction

- 20 guage painted steel box with dedicated compartment for hard-wiring (120V).
- Eight 7/8" knockouts for maximum flexibility in positioning and in-line installation.

Compatibility

Compatible with all Liteline® 24 volt LED lighting products.

SPECIFICATION	
Amperage	1.5A
Application	Undercabinet
Approved Location	Dry
Certification	cULus
Classification	Class II
Colour	WH
Dimming	No
Link Connector	DC 2.1
Max. Op. Temp.	40°C (104°F)
Min. Start Temp.	0°C (32°F)
Power Factor	>0.5
Power Supply Type	Constant Voltage
Plug-in Voltage	100-240V AC
Primary Voltage	24V DC
Warranty	3 Years
Wattage	60W

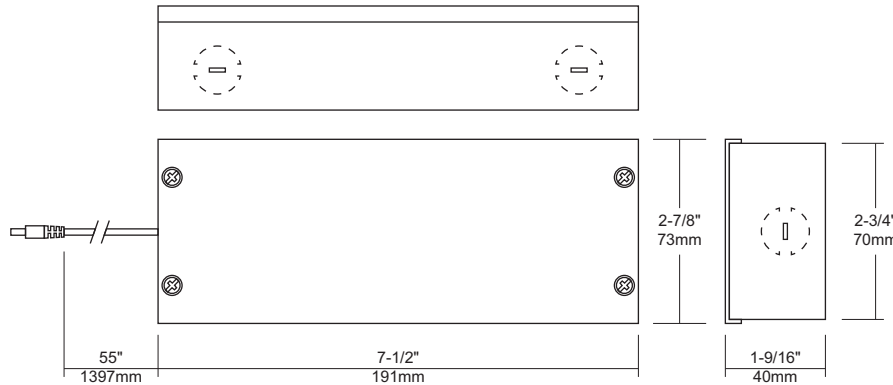


Description

LED-HWB-24V-60W is a Class II, constant voltage, 24V, 60W max. LED driver with hardwire box; for use with 24V LED lighting products. Suitable for indoor use only.



Notes: Accessories should be ordered separately. For additional options please consult your Liteline representative. Due to our continued efforts to improve our products, product specifications are subject to change without notice.



Ordering Guide



LED-HWB-24V-60W
60W indoor LED hardwire box, 24V.

Accessories



LED-SP-4
Optional harness for up to 4 runs, 24V.

