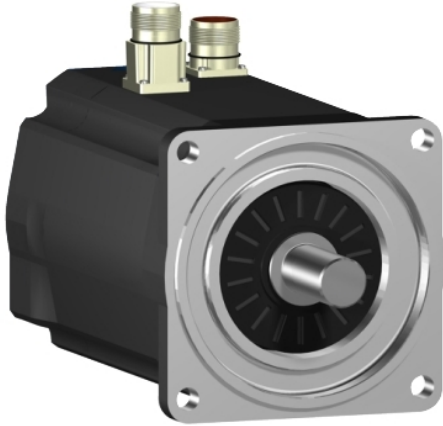


# SH31003P11F1000

servo motor SH3 100

8Nm,key,single,brake,str.conn,IP54/IP65,6k  
RPM



## Main

Range Compatibility	PacDrive 3
Product or Component Type	Servo motor
Device short name	SH3.....P

## Complementary

Maximum mechanical speed	6000 rpm
[Us] rated supply voltage	115...480 V
Phase	Three phase
Continuous stall current	6.6 A
Continuous stall torque	70.81 lbf.in (8 N.m) 115...480 V three phase
Continuous power	2400 W
Peak stall torque	250.48 lbf.in (28.3 N.m) 115...480 V three phase
Nominal output power	790 W 115 V single phase 1470 W 230 V single phase 2390 W 400 V three phase 2560 W 480 V three phase
Nominal torque	45.14 Lbf.in (5.1 N.m) 480 V three phase 66.38 Lbf.in (7.5 N.m) 115 V single phase 61.96 Lbf.in (7 N.m) 230 V single phase 50.45 lbf.in (5.7 N.m) 400 V three phase
Nominal speed	1000 rpm 115 V single phase 2000 rpm 230 V single phase 4000 rpm 400 V three phase 4800 rpm 480 V three phase
Maximum current Irms	28.3 A
Shaft end	Parallel key
Shaft diameter	0.75 in (19 mm)
Shaft length	1.57 in (40 mm)
Key width	0.24 in (6 mm)
IP degree of protection	Shaft bushing without shaft seal ring IP54 EN/IEC 60034-5 Motor IP65 EN/IEC 60034-5 Shaft bushing IP65 EN/IEC 60034-5
Encoder type	Absolute single turn SinCos Hiperface
Speed feedback resolution	128 periods
Holding brake	With
Holding torque	79.66 lbf.in (9 N.m)
Mounting Support	International standard flange
Motor flange size	3.94 in (100 mm)
Electrical Connection	Rotatable right angled connector
Torque constant	1.22 N.m/A 248 °F (120 °C)
Back emf constant	77 V/krpm 68 °F (20 °C)

Number of motor poles	4
Rotor inertia	3.838 kg.cm <sup>2</sup>
Stator resistance	1.43 Ohm
Stator inductance	13.45 mH
Maximum radial force Fr	1050 N 1000 rpm 830 N 2000 rpm 730 N 3000 rpm 660 N 4000 rpm
Maximum axial force Fa	160 N
Type of cooling	Natural convection
Length	10.69 in (271.5 mm)
Centring collar diameter	3.74 in (95 mm)
Centring collar depth	0.14 in (3.5 mm)
Number of mounting holes	4
Mounting holes diameter	0.35 in (9.0 mm)
Circle diameter of the mounting holes	4.53 in (115 mm)
Net Weight	17.64 lb(US) (8 kg)

### Ordering and shipping details

Category	18359-PACDRIVE3 SERVO MOTORS
Discount Schedule	PC52
GTIN	3606481972651
Returnability	No

### Packing Units

Unit Type of Package 1	PCE
Number of Units in Package 1	1
Package 1 Weight	16.50 lb(US) (7.484 kg)

### Offer Sustainability

Sustainable offer status	Green Premium product
California proposition 65	WARNING: This product can expose you to chemicals including: Lead and lead compounds, which is known to the State of California to cause cancer and birth defects or other reproductive harm. For more information go to <a href="http://www.P65Warnings.ca.gov">www.P65Warnings.ca.gov</a>
REACH Regulation	<a href="#">REACH Declaration</a>
EU RoHS Directive	Pro-active compliance (Product out of EU RoHS legal scope)
Mercury free	Yes
China RoHS Regulation	<a href="#">China RoHS Declaration</a>
RoHS exemption information	<a href="#">Yes</a>
Environmental Disclosure	<a href="#">Product Environmental Profile</a>
Circularity Profile	No need of specific recycling operations
WEEE	The product must be disposed on European Union markets following specific waste collection and never end up in rubbish bins.
PVC free	Yes

### Contractual warranty

Warranty	18 months
----------	-----------