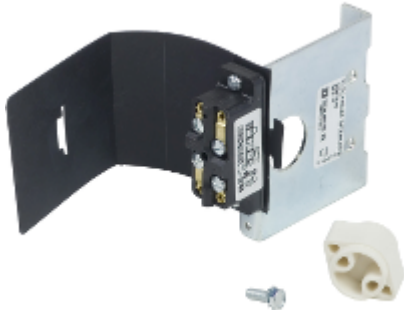


Product Datasheet

Characteristic

9999TC10

Class 9998 & 9999-disconnect switch
auxiliary contact kit-100A-1 pole



Main

range	Square D
product or component type	interlock
device application	control

Complementary

range compatibility	Square D Disconnect Switch
[Ie] rated operational current	15 A 120 V AC 50/60 Hz 15 A 240 V AC 50/60 Hz 15 A 480 V AC 50/60 Hz 15 A 600 V AC 50/60 Hz

Offer Sustainability

Sustainable offer status	Not Green Premium product
RoHS (date code: YYWW)	Will be Compliant on 3Q2014
REACH	Reference not containing SVHC above the threshold