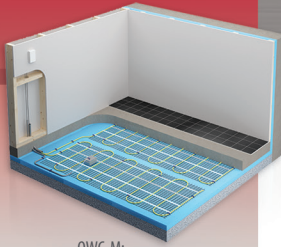


# OWC Heating Cable for Concrete

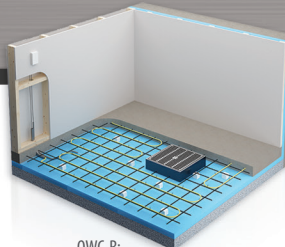
New Surface Areas



OWC-M:  
on rigid insulation, under  
concrete slab min. 4" (10 cm)



OWC-M:  
under concrete topping  
min. 1.5" (4 cm)



OWC-R:  
on metal structure



Training available online [www.ouellet.com](http://www.ouellet.com)

## Features

### Cold lead length

- 8' 2" (2.5 m) cold lead included.

### Control

- Two types of control method possible (see instruction manual for details):
  - Surface heating control with electromechanical thermostat in floor mode (F) and temperature sensor.
  - Ambient heating control with electromechanical thermostat in ambient mode with floor limit (AF) and temperature sensor.

*Note: A ground fault circuit interrupter (GFCI) must be used with this heating device unless exempted by the applicable national and/or local electrical code for the area of installation.*

- See control options on pages 26 and 27.

### Included materials

- 15' (4.6 m) temperature sensor.
- Electrical fault indicator (OTM-CC).
- Measurements table label (to be placed in electrical panel).

### Installation

- **Never cut or shorten the heating cable.**
- For indoor applications only, residential or commercial.
- Installs under a 4" to 6" (10 cm to 15 cm) concrete slab or under a 1.5" to 4" concrete topping (4 cm to 10 cm).

*Note: It's highly recommended to insulate the concrete slab in order to avoid heat loss from below (see instruction manual for all installation details).*

- Compatible with most floor coverings (check with the dealer or manufacturer).

### Warranty

- 20-year warranty on the heating cable.

### Application

- Basement, garage, bathroom, kitchen, family room, workshop, pool, shower, entrance way, hospital, hotel, factory, business, restaurant, sunroom, greenhouse.

## OWC-M Features

### Voltage

- 240/208V, 347V, 1-phase.

### Construction

- Twin conductor heating cable attached to a plastic mat with negligible magnetic field.

### Watt density

- 11W/sq. ft. (120W/sq. m), factory installed on mat at 6" (15 cm) spacing.

### Dimension

- 24" (0.6 m) wide mat available in several lengths.

### Included materials

- Plastic floor fasteners (OW-CLP).

### Installation

- Installation with or without metallic structure for reinforced concrete.

## OWC-R Features

### Voltage

- 240/208V, 1-phase.

### Construction

- Twin conductor heating cable with negligible magnetic field.

### Watt density

- 11W/sq. ft. (120W/sq. m), recommended installation – 6" (15 cm) spacing.

### Included materials

- Plastic tie-wraps (OW-TYW).

### Installation

- Requires a metallic structure or wire mesh for reinforced concrete with spacing of 6" (15 cm) for the installation.

# OWC-M Heating Cable on Mat for Concrete

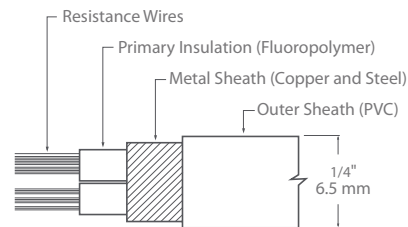
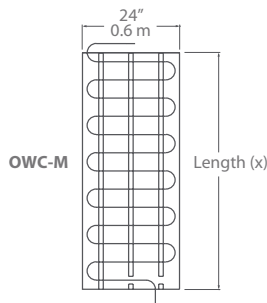
## Models

Watts	Product # 240/208V	Product # 347V	Covered Surface <sup>1</sup>		Length (x)		Weight	
			sq. ft.	sq. m	ft.	m	lb	kg
150	OWC-M0150	-	14	1.3	6'3"	1.9	3.0	1.4
300	OWC-M0300	-	28	2.6	12'6"	3.8	4.0	1.8
400	OWC-M0400	-	38	3.5	16'8"	5.1	4.5	2.0
500	OWC-M0500	-	46.5	4.3	20'10"	6.4	5.0	2.3
600	OWC-M0600	-	56	5.2	25'	7.6	6.0	2.7
700	OWC-M0700	-	65.5	6.1	29'2"	8.9	7.0	3.1
850	OWC-M0850	-	80	7.4	35'5"	10.8	8.0	3.6
950	OWC-M0950	-	89	8.3	39'7"	12.1	9.0	4.0
1100	OWC-M1100	-	103	9.6	45'10"	14.0	10.0	4.5
1200	OWC-M1200	-	113	10.5	50'	15.2	11.0	5.0
1300	OWC-M1300	-	121.5	11.3	54'2"	16.5	12.0	5.4
1500	OWC-M1500	-	140.5	13.1	62'6"	19.1	14.0	6.4
1700	OWC-M1700	-	159	14.8	70'10"	21.6	16.0	7.2
2000	OWC-M2000	OWC-M2007	187.5	17.4	83'4"	25.4	18.0	8.1
2200	OWC-M2200	-	206	19.1	91'6"	27.9	21.0	9.5
2400	OWC-M2400	OWC-M2407	225	20.9	100'	30.5	23.0	10.4
2550	OWC-M2550	-	239	22.2	106'6"	32.5	25.0	11.3
2700	OWC-M2700	OWC-M2707	253	23.5	112'6"	34.3	28.0	12.7
2850	OWC-M2850	-	267	24.8	119'	36.3	30.0	13.6
3000	OWC-M3000	OWC-M3007	281	26.1	125'	38.1	32.0	14.5
3200	OWC-M3200	-	300	27.9	133'6"	40.7	34.0	15.4
3400	OWC-M3400	OWC-M3407	318.5	29.6	141'8"	43.2	36.0	16.3
3700	OWC-M3700 <sup>2</sup>	OWC-M3707	346.5	32.2	154'2"	47.0	39.0	17.7
4000	OWC-M4000 <sup>2</sup>	OWC-M4007	375	34.8	166'8"	50.8	42.0	19.0

<sup>1</sup> Does not represent the room surface but rather the area covered by the cable mat including 3" (7.5 cm) spacing between the mat strips but excluding fixed elements to be bypassed and any other required clearances.

<sup>2</sup> Not compatible with OTH770, TH115 and CT230. Requires relay with low voltage thermostat OTH824 or TH115-AF-024T/U.

208V = 75% of wattage at 240V.



# OWC-R Heating Cable in Reel for Concrete

## Models

Watts	Product # 240/208V	Covered Surface <sup>2</sup> Spacing 6" (15 cm)		Length		Weight	
		sq. ft.	sq. m	ft.	m	lb	kg
300	OWC-R0300	28	2.3	56'	17.1	4.0	1.8
500	OWC-R0500	46.5	4.3	93'	28.4	5.0	2.3
700	OWC-R0700	65.5	5.8	125'	38.1	7.0	3.1
950	OWC-R0950	89	8.2	176'	53.6	9.0	4.0
1300	OWC-R1300	121.5	11.6	250'	76.2	12.0	5.4

<sup>2</sup> Does not represent the room surface but rather the area covered by the cable while leaving a 6" (15 cm) spacing between cables and excluding fixed elements to be bypassed and any other clearance required. 208V = 75% of wattage at 240V.

## OWC-M and OWC-R Options

Product #	Description
OTM-CC	CableCheck - Electrical fault indicator
OW-CLP	Bag of 50 plastic floor fasteners for heating cable on mat
OW-KIT	Repair kit for concrete heating cables
OW-TYW	Bag of 100 plastic tie-wraps for heating cable in reel