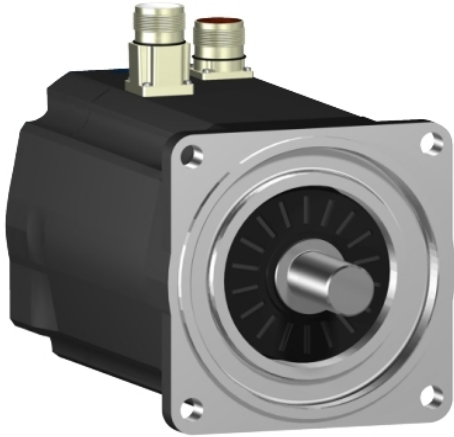


SH31403P12A1200

servo motor SH3 140

27,8Nm,key,multi,nobrake,str.conn,IP65/
IP67,4k RPM



Main

Range Compatibility	PacDrive 3
Product or Component Type	Servo motor
Device short name	SH3.....P

Complementary

Maximum mechanical speed	4000 rpm
[Us] rated supply voltage	115...480 V
Phase	Three phase
Continuous stall current	17.6 A
Continuous stall torque	246.05 lbf.in (27.8 N.m) 115...480 V three phase
Continuous power	4100 W
Peak stall torque	798.34 lbf.in (90.2 N.m) 115...480 V three phase
Nominal output power	1940 W 115 V single phase 3330 W 230 V single phase 4050 W 400 V three phase 3430 W 480 V three phase
Nominal torque	218.61 Lbf.In (24.7 N.m) 115 V single phase 187.64 Lbf.In (21.2 N.m) 230 V single phase 114.17 Lbf.In (12.9 N.m) 400 V three phase 80.54 lbf.in (9.1 N.m) 480 V three phase
Nominal speed	750 rpm 115 V single phase 1500 rpm 230 V single phase 3000 rpm 400 V three phase 3600 rpm 480 V three phase
Maximum current Irms	61 A
Shaft end	Parallel key
Shaft diameter	0.94 in (24 mm)
Shaft length	1.97 in (50 mm)
Key width	0.31 in (8 mm)
IP degree of protection	Motor IP65 EN/IEC 60034-5 Shaft bushing IP65 EN/IEC 60034-5 Housing IP67 EN/IEC 60034-5
Encoder type	Absolute multiturm SinCos Hiperface
Speed feedback resolution	128 periods
Holding brake	Without
Mounting Support	International standard flange
Motor flange size	5.51 in (140 mm)
Electrical Connection	Straight connector
Torque constant	1.58 N.m/A 248 °F (120 °C)
Back emf constant	105 V/krpm 68 °F (20 °C)
Number of motor poles	5

Rotor inertia	17.94 kg.cm ²
Stator resistance	0.4 Ohm
Stator inductance	7.72 mH
Maximum radial force Fr	2420 N 1000 rpm 1920 N 2000 rpm 1670 N 3000 rpm
Maximum axial force Fa	300 N
Type of cooling	Natural convection
Length	12.89 in (327.5 mm)
Centring collar diameter	5.12 in (130 mm)
Centring collar depth	0.14 in (3.5 mm)
Number of mounting holes	4
Mounting holes diameter	0.43 in (11 mm)
Circle diameter of the mounting holes	6.50 in (165 mm)
Net Weight	46.96 lb(US) (21.3 kg)

Ordering and shipping details

Category	18359-PACDRIVE3 SERVO MOTORS
Discount Schedule	PC52
Returnability	No

Packing Units

Unit Type of Package 1	PCE
Number of Units in Package 1	1
Package 1 Weight	46.86 lb(US) (21.255 kg)

Offer Sustainability

Sustainable offer status	Green Premium product
California proposition 65	WARNING: This product can expose you to chemicals including: Lead and lead compounds, which is known to the State of California to cause cancer and birth defects or other reproductive harm. For more information go to www.P65Warnings.ca.gov
REACH Regulation	REACH Declaration
EU RoHS Directive	Pro-active compliance (Product out of EU RoHS legal scope)
Mercury free	Yes
China RoHS Regulation	China RoHS Declaration
RoHS exemption information	Yes
Environmental Disclosure	Product Environmental Profile
Circularity Profile	No need of specific recycling operations
WEEE	The product must be disposed on European Union markets following specific waste collection and never end up in rubbish bins.
PVC free	Yes

Contractual warranty

Warranty	18 months
----------	-----------