

# Keywerks™ 2U Rack Mount Patch Panel

## Description

Keywerks™ 2U rack mount patch panel provides a flexible, high density termination solution for the telecommunications room and data center's horizontal distribution or equipment room. It is designed to accept all Keywerks Jacks, Keywerks fiber optic adapters, and Keywerks audio/video connectors or any other product with standard Keystone footprint. The rear cable management bracket is included and helps to support cable bundles. The Keywerks 2U rack mount patch panel is compatible with standard 19 in. racks and cabinets.

## Features and Benefits

Accepts all Keywerks modules or any other product with standard Keystone footprint  
Rear cable management bracket included  
Port numbering back & front and ID labels

Installation hardware and instruction manual included  
Compatible with 19 inches racks and cabinets

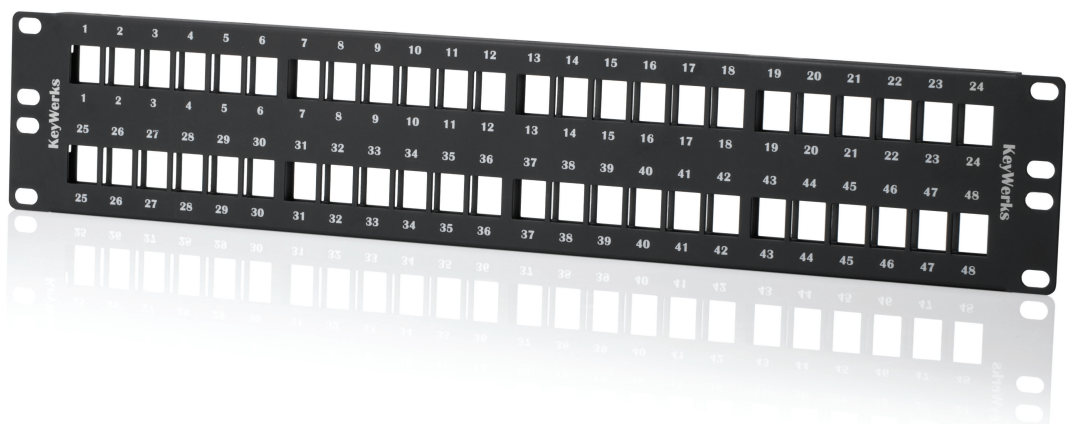
## Applications

Data center horizontal distribution  
Data center equipment room  
Work area

Telecommunications room  
Consolidation point

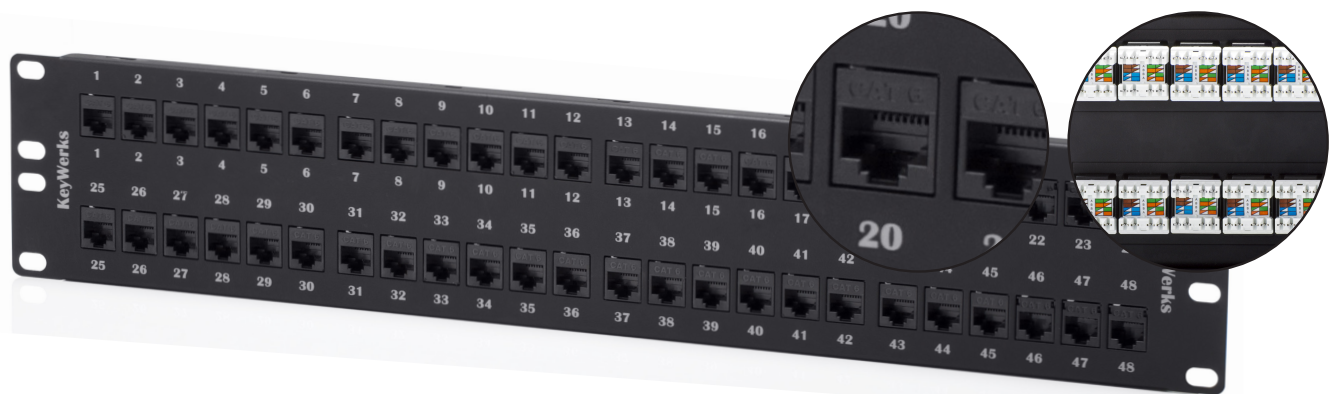
## Certification and Compliance

TIA-569	Commercial Building Standard for Telecommunications Pathways and Spaces.
CEA/EIA-310	Cabinets, Racks, Panels and Associated Equipment standard.
ANSI/TIA-568-C.2	Balanced Twisted-Pair Telecommunications Cabling and Component Standards.
ANSI/TIA/EIA-606	Administration Standard for Telecommunications Infrastructure.
FCC part 68	Connection of the Terminal Equipment to the Telephone Network.
UL 94	Tests for Flammability of Plastic Material for Parts in Devices and Appliances.
UL Listed	Communications-Circuit Accessories (Canada & USA).
RoHS	Directive on Restriction of Hazardous Substances.





WW000041 shown



WW000037 shown

### Ordering Information

Description	Part Number
Keywerks 2U/48-port patch panel black, <b>empty</b>	<b>WW000041</b>
Keywerks 2U/48-port patch panel loaded with <b>CAT6A</b> black modules	<b>WW001505</b>
Keywerks 2U/48-port patch panel loaded with <b>CAT6</b> black modules	<b>WW000037</b>
Keywerks 2U/48-port patch panel loaded with <b>CAT5e</b> black modules	<b>WW000027</b>

### Packaging

Description
Cardboard box, 1 unit per box.

### Inclusion

Description
2 rear cable management bracket kits, 24 nylon tie wraps, 4 Philips screws 10-32 & 4 Philips screws 12-24, 4 ID labels, instructions manual.

### Physical Characteristics

Parameter	Value
Port capacity	48-port
Plastic materials	UL 94V-0 ABS thermoplastic
Panel material	Cold rolled steel (CRS) 0.060 in, ASTM 1008
Finish	Black sandtext
Weight	Loaded 2.25 kg (4.96 lbs) Empty 1.3 kg (2.86 lbs)
Overall dimensions	482.59 mm (19 in) x 88.89 mm (3.5 in)

### Mechanical Characteristics

Parameter	Value
Installation temperature	-20° C (-4° F) ~ 40° C (104° F)
Storage temperature	-40° C (-40° F) ~ 125° C (257° F)