

Zelio™ & Legacy relays



750 universal relays					
Contact		2 CO	3 CO	2 CO	3 CO
Current		10 A			
Connection		Cylindrical / octal PINs			
Feature		Clear cover (no features)		With LED & lockable test button	
Complete product	24 VAC	750XBXRC24A	–	–	–
	120 VAC	750XBXRC120A	750XCXRC120A	750XBXRM4L120A	750XCXRM4L120A
	240 VAC	750XBXRC240A	–	–	–
	12 VDC	750XBXRC12D	–	–	–
	24 VDC	750XBXRC24D	750XCXRC24D	750XBXRM4L24D	750XCXRM4L24D
Screw terminal socket		704641	704651	704641	704651



RPF power relays		
Contact		2 NO
Current		30 A (1)
Complete product	120 VAC	RPF2AF7
	230 VAC	RPF2AP7

92 power relays			
Contact		2 NO	2 CO
Current		30 A (1)	NO: 30 A, NC:3 A (1)
Connection		Flat pins (faston type)	
Complete product	24 VAC	92S7A22D24	92S11A22D24
	120 VAC	92S7A22D120	92S11A22D120
	24 VDC	–	92S11D22D24

(1) 30 A when mounted with 13 mm (0.51 in.) gap between two relays and 25 A when mounted side by side without a gap.



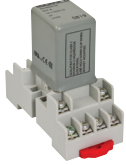
725 power relays			
Contact		1 NO	2 NO
Current		30 A	25 A
Connection		Screw terminals	
Complete product	120 VAC	725AXXSC3ML120A	725BXXSC3ML120A
	240 VAC	725AXXSC3ML240A	725BXXSC3ML240A
	24 VDC	725AXXSC3ML24D	725BXXSC3ML24D

Zelio™ & Legacy relays



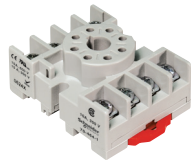
820 timers

Input Voltage	Functions	Timing Range	Contact Configuration	Rated Current	Standard Part Number
12–240 VAC/VDC	Multifunction (10 available functions)	10 ms to 10 days	1 CO	15 A	821TD10HUNI
			2 CO	15 A	822TD10HUNI



8501RS31 miniature C1D2 relays

Contact		4 CO
Current		5 A
Connection		Flat pins (faston type)
Complete product	120 VAC	8501RS34V20
	24 VDC	8501RSD34V53
Screw clamp socket		RXE2M114
Screw connector socket		RXE2S114M
Screw clamp socket		70782D141
Screw terminal socket		704611



750H octal C1D2 relays

Contact		2 CO	3 CO
Current		10 A	
Connection		Cylindrical / octal PINs	
Complete Product	120 VAC	750XBXH120A	750XCXH120A
	24 VDC	750XBXH24D	750XCXH24D
Screw terminal socket		704641	704651

Zelio™ & Legacy relays



861H solid state C1D2 relays		
Input Characteristics		
Input Voltage Range	3.5–32 VDC	90–280 VAC
Must Release Voltage	1 VDC	10 VAC
Nominal Input Impedance	Current regulator	16–25 kΩ
Typical Input Current at 5 VDC	12 mA	12 mA
Reverse Polarity Protection	Yes	N/A
Output Characteristics		
Switching Device	MOSFET	SCR
Switching Type	DC Switching	AC Zero Cross; AC Random
Contact Configuration	SPST-NO	SPST-NO, SPST-NC
Output Voltage Range	3–50 VDC; 3–150 VDC	24–480 VAC; 48–480 VAC; 48–600 VAC
Configuration	1 NO	1 NO
Current	8 A	10 A
Connection	Screw terminals	
Complete Product	861HSSR208DD	861HSSR210AC1

Relay selection chart

Reference Number	Relay Category	Contact Form						Switching Current										
		1NO (SPST-NO)	1CO (SPDT)	2NO (DPST-NO)	2CO (DPDT)	3CO (3PDT)	4CO (4PDT)	<3 A	5 A	6 A	8 A	10 A	12 A	15 A	25 A (NO) 3 A (NC)	25 A	30 A	
RSL1PVBU	Slim Interface 6 mm		■							■								
RSL1PVFU				■							■							
RSB1A120BD	PCB Interface		■									■						
RSB1A120F7			■									■						
RSB2A080BD						■					■							
RSB2A080F7					■					■								
RXG15BD	Plug-In Interface		■										■					
RXG15F7			■										■					
RXG12BD			■										■					
RXG12F7			■										■					
RXB25BD						■				■								
RXG25F7						■				■								
RXG22F7					■				■									
RXM2A2BD	Miniature Ice Cube				■								■					
RXM2A2F7					■								■					
RXM3AB2F7							■						■					
RXM4AB1F7								■				■						
RXM4AB2BD								■				■						
RXM4AB2F7								■				■						
RXM4AB2BD								■				■						
RXM4AB2F7								■				■						
RXM4AB3F7								■				■						
792BXC24A						■								■				
792BXC120A						■								■				
792BXC240A						■								■				
792BXC24D						■								■				
792DXC120A								■			■							
792DXC24D								■			■							
792BXM4L120A						■								■				
792BXM4L24D						■								■				
792DXM4L120A								■			■							
792DXM4L24D								■			■							
792DX3C120A								■		■								
792DX3C24D							■		■									
RPM12BD	General Purpose Plug-In		■											■				
RPM12F7			■												■			
RPM22BD						■									■			
RPM22B7						■									■			
RPM42BD								■							■			
RPM42F7								■							■			
781XAXRC24A				■											■			
781XAXRC120A				■											■			
781XAXRC24D				■											■			
782BXC24A						■									■			
782BXC120A						■									■			
782BXC240A						■									■			
782BXC24D						■									■			
784DXC24A								■							■			
784DXC120A								■							■			
784DXC240A								■							■			
784DXC24D								■							■			
781XAXRM4L24A				■											■			
781XAXRM4L24D				■											■			
782BXM4L24A						■									■			
782BXM4L120A						■									■			
782BXM4L240A						■									■			
782BXM4L12D						■									■			
782BXM4L24D						■									■			
784DXM4L24A								■							■			
784DXM4L120A								■							■			
784DXM4L240A								■							■			
784DXM4L24D								■							■			

Relay selection chart

Reference Number	Relay Category	Coil/Input Voltage										Features				Timing Features	
		3.5-32 VDC	12 VDC	12-240 VAC/VDC	24 VAC VDC	24 VAC	24 VDC	90-280 VAC	110 VAC VDC	120 VAC	240 VAC	None	LED	Test Button	Lockable Test Button	10 ms - 10 days	Multi-function
RSL1PVBU	Slim Interface 6 mm				■								■				
RSL1PVFU									■					■			
RSB1A120BD	PCB Interface						■						■				
RSB1A120F7										■			■				
RSB2A080BD							■						■				
RSB2A080F7										■			■				
RXG15BD	Plug-In Interface						■						■				
RXG15F7										■			■				
RXG12BD							■							■		■	
RXG12F7											■			■		■	
RXB25BD							■						■				
RXG25F7											■			■			
RXG22F7											■			■		■	
RXM2A2BD	Miniature Ice Cube						■						■		■		
RXM2A2F7											■			■		■	
RXM3AB2F7											■			■		■	
RXM4AB1F7											■			■		■	
RXM4AB2BD							■							■		■	
RXM4AB2F7											■			■		■	
RXM4AB2BD							■							■		■	
RXM4AB2F7											■			■		■	
RXM4AB3F7											■			■		■	
792XBX24A						■								■			
792XBX120A											■			■			
792XBX240A												■		■			
792XBX24D							■							■			
792XDXC120A											■			■			
792XDXC24D							■							■			
792XBM4L120A											■			■		■	
792XBM4L24D							■							■		■	
792DXM4L120A											■			■		■	
792DXM4L24D							■							■		■	
792DX3C120A											■			■			
792DX3C24D						■							■				
RPM12BD	General Purpose Plug-In						■						■		■		
RPM12F7											■			■		■	
RPM22BD							■							■		■	
RPM22B7						■								■		■	
RPM42BD							■							■		■	
RPM42F7											■			■		■	
781XAXRC24A						■								■			
781XAXRC120A											■			■			
781XAXRC24D							■							■			
782XBX24A						■								■			
782XBX120A											■			■			
782XBX240A												■		■			
782XBX24D							■							■			
784DXC24A						■								■			
784DXC120A											■			■			
784DXC240A												■		■			
784DXC24D							■							■		■	
781XAXRM4L24A						■								■		■	
781XAXRM4L24D							■							■		■	
782XBM4L24A						■								■		■	
782XBM4L120A											■			■		■	
782XBM4L240A												■		■		■	
782XBM4L12D			■											■		■	
782XBM4L24D						■								■		■	
784DXM4L24A						■								■		■	
784DXM4L120A											■			■		■	
784DXM4L240A												■		■		■	
784DXM4L24D							■							■		■	

Relay selection chart

Reference Number	Relay Category	Contact Form						Switching Current										
		1NO (SPST-NO)	1CO (SPDT)	2NO (DPST-NO)	2CO (DPDT)	3CO (3PDT)	4CO (4PDT)	<3 A	5 A	6 A	8 A	10 A	12 A	15 A	25 A (NO) 3 A (NC)	25 A	30 A	
RUMC22BD	Universal Octal PIN				■							■						
RUMC22F7					■							■						
RUMC32BD							■					■						
RUMC32F7							■					■						
750XBXRC24A						■						■						
750XBXRC120A						■						■						
750XBXRC240A						■						■						
750XBXRC12D						■						■						
750XBXRC24D						■						■						
750XCXRC120A							■					■						
750XCXRC24D							■					■						
750XBXRM4L120A						■						■						
750XBXRM4L24D						■						■						
750XCXRM4L120A							■					■						
750XCXRM4L24D							■					■						
RPF2AF7	Power			■													■	
RPF2AP7				■													■	
92S7A22D24				■														■
92S7A22D120				■														■
92S11A22D24						■										■		
92S11A22D120						■									■			
92S11D22D24						■									■			
725AXXSC3ML120A			■															■
725AXXSC3ML240A			■															■
725AXXSC3ML24D			■															■
725BXXSC3ML120A				■													■	
725BXXSC3ML240A				■													■	
725BXXSC3ML24D				■													■	
8501RS34V20	Miniature C1D2								■									
8501RSD34V53									■									
750XBXH120A	Octal PIN C1D2												■					
750XBXH24D													■					
750XCXH120A													■					
750XCXH24D												■						
861HSSR208DD	Solid State C1D2										■							
861HSSR210AC1												■						
821TD10HUNI	Timer		■												■			
822TD10HUNI						■									■			

Relay selection chart

Reference Number	Relay Category	Coil/Input Voltage										Features				Timing Features	
		3.5-32 VDC	12 VDC	12-240 VAC/VDC	24 VAC VDC	24 VAC	24 VDC	90-280 VAC	110 VAC VDC	120 VAC	240 VAC	None	LED	Test Button	Lockable Test Button	10 ms - 10 days	Multi-function
RUMC22BD	Universal Octal PIN						■						■		■		
RUMC22F7										■			■		■		
RUMC32BD								■					■		■		
RUMC32F7										■			■		■		
750XBXR24A							■						■				
750XBXR120A										■			■				
750XBXR240A											■		■				
750XBXR12D			■										■				
750XBXR24D						■							■				
750XCXR120A										■			■				
750XCXR24D								■					■				
750XBXRM4L120A										■			■		■		
750XBXRM4L24D								■					■		■		
750XCXRM4L120A										■			■		■		
750XCXRM4L24D								■					■		■		
RPF2AF7	Power											■					
RPF2AP7												■	■				
92S7A22D24							■						■				
92S7A22D120										■			■				
92S11A22D24							■						■				
92S11A22D120										■			■				
92S11D22D24								■					■				
725AXXSC3ML120A										■			■	■			
725AXXSC3ML240A											■		■	■			
725AXXSC3ML24D								■					■	■			
725BXXSC3ML120A										■			■	■			
725BXXSC3ML240A											■		■	■			
725BXXSC3ML24D							■					■	■				
8501RS34V20	Miniature C1D2									■							
8501RSD34V53						■											
750XBXH120A	Octal PIN C1D2									■							
750XBXH24D							■										
750XCXH120A											■						
750XCXH24D							■										
861HSSR208DD	Solid State C1D2	■											■				
861HSSR210AC1								■						■			
821TD10HUNI	Timer				■								■	■		■	
822TD10HUNI						■								■	■		■