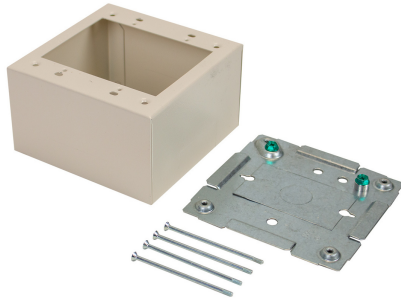




## Wiremold 2G EXT DEEP DEVICE BOX-FOG WHITE

Part No. C2444-2FW



2400® Series Raceway is a single compartment raceway designed for communication or power applications and ideal for use in classrooms, offices, and hotel applications, or anywhere a small low profile raceway is needed. 2400D® Series Divided Raceway is a low profile steel raceway for use where a limited number of power and low voltage cables are required in the same raceway.

### Features & Benefits

Two-gang device box with extra depth to allow installation of cabling that requires greater bend radius and storage. Cover has twistout on all four sides for 2400 Series Raceway.

Base has knockout to enable extension from existing single-gang flush wall box and 1/2" and 1" concentric trade size KOs. Accepts industry standard faceplates for electrical and communication devices.

Certified to Canadian Safety Standards for sale in Canada. When ordering this product for Canada, add "C" to the beginning of the part number to denote Canadian versions, i.e. "CV2444" or "C2444-FW".

NOTE: Accepts NEMA double-gang standard faceplates.

### Specifications

#### General Info

Product Line	Wiremold	Color	Fog White
UPC Number	786776139167	Country Of Origin	United States
Product Series	2400 Series	Installation Location	On Wall
Application Sector	Commercial	Warranty Type	1-Year from Installation or 2-Years from Day of Sale
Type	Raceway Device Box		

#### Dimensions

Product Weight US	1.354 lb	Knockout Size	1 in, 1/2 in
-------------------	----------	---------------	--------------

#### Listing Agencies / 3rd Party Agencies

---

cULus ListingNumber	E41751	cULus Listed	Yes
---------------------	--------	--------------	-----

---

#### Additional Information

---

RoHS Compliant	Yes
----------------	-----

---

#### Technical Information

---

Is Pre-Wired	No	Number of Gangs	2
--------------	----	-----------------	---

---

Indoor/Outdoor	Indoor
----------------	--------

---