



### Main

|   |  |
|---|--|
| Range of product  | OsiSense XM  |
| Product or component type                               | Electromechanical pressure sensor  |
| Pressure sensor type                                    | Electromechanical pressure sensor  |
| Device short name                                       | XMLB   |
| Pressure sensor size                                    | 7251.89 psi (500 bar)  |
| Controlled fluid  | Air (0...160 °C)<br>Corrosive fluid (0...160 °C)                               |
| Fluid connection type                                   | G 1/4 (female) conforming to ISO 228   |
| Electrical connection                                   | Screw-clamps terminals, 1 x 0.5...2 x 2.5 mm <sup>2</sup><br>1 connector Pg 13 |
| AWG gauge   | AWG 20...AWG 14  |
| Cable entry   | Cable gland 0.35...0.51 in (9...13 mm)   |
| Contacts type and composition                           | 1 C/O  |
| Product specific application                            | -  |
| Pressure switch type of operation                       | Regulation between 2 thresholds  |
| Electrical circuit type                                 | Control circuit  |
| Scale type  | Adjustable differential  |
| Local display   | With   |
| Adjustable range of switching point on rising pressure  | 435.11...7251.89 psi (30...500 bar)  |
| Adjustable range of switching point on falling pressure | 101.53...6488.99 psi (7...447.4 bar)   |
| Possible differential maximum at high setting           | 4351.13 psi (300 bar)  |
| Maximum permissible accidental pressure                 | 16316.75 psi (1125 bar)  |
| Destruction pressure                                    | 32633.49 psi (2250 bar)  |
| Pressure actuator                                       | Piston   |

Disclaimer: This documentation is not intended as a substitute for and is not to be used for determining suitability or reliability of these products for specific user applications

|                                 |  |
|---------------------------------|--|
| Materials in contact with fluid | 316L stainless steel<br>FPM, FKM<br>PTFE   |
| Enclosure material              | Zinc alloy   |
| [In] rated current              | 3 A, B300, AC-15 (Ue = 120 V) conforming to EN/IEC 60947-5-1<br>1.5 A, B300, AC-15 (Ue = 240 V) conforming to EN/IEC 60947-5-1<br>0.1 A, R300, DC-13 (Ue = 250 V) conforming to EN/IEC 60947-5-1 |

## Complementary

|   |   |
|---|---|
| Possible differential minimum at low setting  | 333.59 psi (23 bar) - 2.6 bar, + 3.8 bar  |
| Possible differential minimum at high setting | 762.90 psi (52.6 bar) - 14.8 bar, + 11.2 bar  |
| Maximum permissible pressure - per cycle      | 9064.86 psi (625 bar)   |
| Terminal block type                           | 4 terminals   |
| Maximum operating rate                        | 60 cyc/mn   |
| Repeat accuracy                               | 2 %   |
| [Ui] rated insulation voltage                 | 300 V conforming to UL 508<br>500 V conforming to EN/IEC 60947-1<br>300 V conforming to CSA C22.2 No 14 |
| [Uimp] rated impulse withstand voltage        | 6 kV EN/IEC 60947-1   |
| Auxiliary contacts operation                  | Snap action   |
| Contacts material                             | Silver contacts   |
| Maximum resistance across terminals           | 25 mOhm conforming to IEC 255-7 category 3<br>25 mOhm conforming to NF C 93-050 method A                |
| Short-circuit protection                      | 10 A cartridge fuse, type gG (gl)   |
| Mechanical durability                         | 3000000 cycles  |
| Setting                                       | External  |
| Height  | 4.45 in (113 mm)  |
| Depth   | 2.95 in (75 mm)   |
| Width   | 1.38 in (35 mm)   |
| Net weight                                    | 1.65 lb(US) (0.75 kg)   |

## Environment

|                                       |  |
|---------------------------------------|--|
| Standards                             | UL 508<br>CSA C22.2 No 14<br>EN/IEC 60947-5-1<br>CE  |
| Product certifications                | LROS (Lloyds register of shipping)<br>BV<br>UL<br>CSA<br>EAC<br>CCC                                  |
| Protective treatment                  | TC standard version  |
| Ambient air temperature for operation | -13...158 °F (-25...70 °C)   |
| Ambient air temperature for storage   | -40...158 °F (-40...70 °C)   |
| Operating position                    | Any position   |
| Vibration resistance                  | 4 gn conforming to IEC 60068-2-6 (f = 30...500 Hz)   |
| Shock resistance                      | 50 gn conforming to IEC 60068-2-27   |
| Electrical shock protection class     | Class I conforming to IEC 1140<br>Class I conforming to IEC 536<br>Class I conforming to NF C 20-030 |
| IP degree of protection               | IP66 conforming to EN/IEC 60529  |

## Packing Units

|                        |     |
|------------------------|-----|
| Unit Type of Package 1 | PCE |
|------------------------|-----|

|                              |                          |
|------------------------------|--------------------------|
| Number of Units in Package 1 | 1                        |
| Package 1 Weight             | 27.41 oz (777 g)         |
| Package 1 Height             | 1.57 in (4 cm)           |
| Package 1 width              | 3.35 in (8.5 cm)         |
| Package 1 Length             | 4.80 in (12.2 cm)        |
| Unit Type of Package 2       | S02                      |
| Number of Units in Package 2 | 13                       |
| Package 2 Weight             | 23.08 lb(US) (10.471 kg) |
| Package 2 Height             | 5.91 in (15 cm)          |
| Package 2 width              | 11.81 in (30 cm)         |
| Package 2 Length             | 15.75 in (40 cm)         |

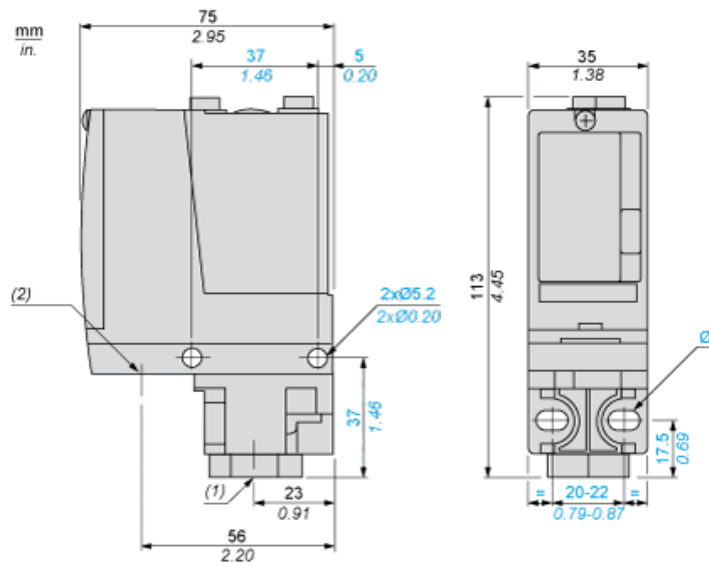
### Offer Sustainability

|                            |   |
|----------------------------|---|
| Sustainable offer status   | Green Premium product   |
| REACH Regulation           | <a href="#">REACH Declaration</a>   |
| EU RoHS Directive          | Pro-active compliance (Product out of EU RoHS legal scope)<br><a href="#">EU RoHS Declaration</a> |
| Mercury free               | Yes   |
| RoHS exemption information | <a href="#">Yes</a>   |
| Environmental Disclosure   | <a href="#">Product Environmental Profile</a>   |

### Contractual warranty

|          |           |
|----------|-----------|
| Warranty | 18 months |
|----------|-----------|

Dimensions



- (1) 1 fluid entry, tapped G1/4 (BSP female)
- (2) 1 electrical connections entry, tapped Pg 13.5
- Ø : 2 elongated holes Ø 5.2 x 6.7

---

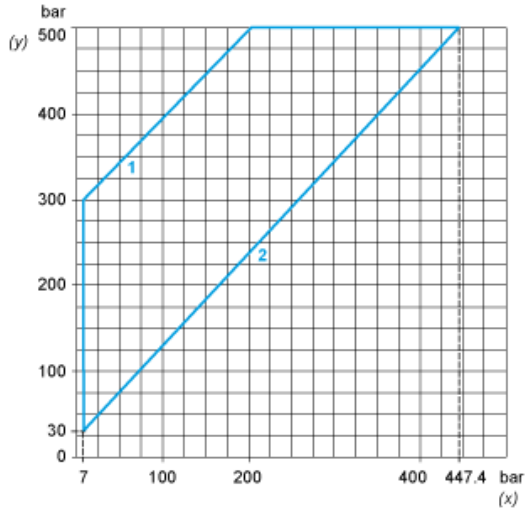
## Wiring Diagram

---

## Terminal Model



Operating Curves



- (y) Rising pressure
- (x) Falling pressure
- 1 : Maximum differential
- 2 : Minimum differential



- (y) Pressure
- (x) Time
- (1) Adjustable value
- PH : High point
- PB : Below point