

# Keywerks™ Multimedia Modules & Inserts

**Description**

Keywerks™ multimedia modules with Keystone footprint provide a great flexibility of applications and allow to achieve the exact configuration to specific outlets requirements. Keywerks multimedia modules are compatible with all Keywerks keystone faceplates, patch panels and surface mount boxes for transmissions through fiber optic and copper. They are compatible with any receiving apparatus featuring a Keystone footprint such as faceplates, patch panels, surface mount boxes.

**Features and Benefits**

Quick and easy installation with snap-in mechanism  
Compatible with Keywerks faceplates, patch panels and surface mount box

Fiber optic and copper multimedia modules  
Available in almond, white and black  
Fits into any standard Keystone style opening

**Applications**

Telecommunication room and equipment room connections

Consolidation point connections  
Multimedia work area outlet

**Certification and Compliance**

ANSI/TIA-568-C.2	Balanced Twisted-Pair Telecommunications Cabling and Components Standards.
ANSI/TIA-568-C.3	Optical Fiber Cabling Components Standard
ANSI/SCTE 02 S	Specification for "F" Port, Female, Indoor
TIA-604 series	Fiber Optic Connector Intermateability Standard
TIA-455 series	Standard Test Procedure for Fiber Optic Components
IEC 60603-7	Connectors for Electronic Equipment.
IEC 60169	Radio Frequency Connector
IEC 60958	Digital Audio Interface
UL 94	Tests for Flammability of Plastic Material for Parts in Devices and Appliances.
RoHS	Directive on Restriction of Hazardous Substances.



Ordering Information



RJ45 Module Dust Cap (10 per bag)										
KW-DUSTCAP-YY*										
CL	GY	BW	WH	YL	RD	BK	PR	AL	BL	GN
Clear	Grey	Brown	White	Yellow	Red	Black	Purple	Almond	Blue	Green



BNC Small Footprint Coupler		
KW-CZZ-BNS-YY*		
BK	WH	AL
Black	White	Almond



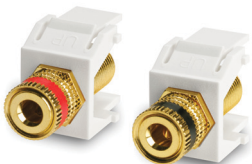
BNC 75 Ohms Coupler		
KW-CZZ-BNC-YY*		
BK	WH	AL
Black	White	Almond



F-Type 3 GHz Coupler		
KW-CZZ-FTC-YY*		
BK	WH	AL
Black	White	Almond



RCA to F-Type Connector		
KW-CZZ-RFA-YY*		
BK	WH	AL
Black	White	Almond

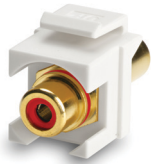


Speaker Binding Post (pair black and red)		
KW-CZZ-BPM-YY*		
BK	WH	AL
Black	White	Almond

\*Replace YY by the desired color code



HDMI Coupler		
<b>KW-CZZ-HDF-WH</b>		



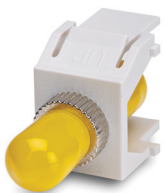
RCA Coupler										
<b>KW-CZZ-RCX***-AA*</b>										
R	W	B	G	Y				BK	WH	AL
Red	White	Blue	Green	Yellow				Black	White	Almond



LC Fiber Optic Keystone									
<b>KW-FXX**-LCZ-YY*</b>									
S1	S2	M1	M3				BK	WH	AL
Single Mode	Single Mode APC	Multimode	Multimode OM3				Black	White	Almond



SC Fiber Optic Keystone									
<b>KW-FXX**-SCZ-YY*</b>									
S1	S2	M1	M3				BK	WH	AL
Single Mode	Single Mode APC	Multimode	Multimode OM3				Black	White	Almond



ST Fiber Optic Keystone								
<b>KW-FXX**-STZ-YY*</b>								
S1	M1					BK	WH	AL
Single Mode	Multimode					Black	White	Almond



Keystone Blank Insert (10 per bag)		
<b>KW-ZZZ-BLK-YY*</b>		
BK	WH	AL
Black	White	Almond

\*Replace **AA** or **YY** by the desired color code

\*\*Replace **XX** by the desired mode

\*\*\*Replace **X** by the desired Insulation color

<b>Packaging</b>	<b>Description</b>	
	Clear poly bag, 1 unit per bag, or otherwise specified.	
<b>Physical Characteristics</b>	<b>Parameter</b>	<b>Value</b>
	Plastic material	UL 94V-0 ABS high-impact thermoplastic
<b>Mechanical Characteristics</b>	<b>Parameter</b>	<b>Value</b>
	Operating temperature	-40° C (-40° F) ~ 75° C (167° F)
	Storage temperature	-40° C (-40° F) ~ 85° C (185° F)