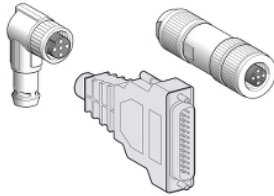


Product data sheet

Characteristics

VW3L5T000

connector for assembly of Modbus TCP cable -
1 female connector M12, 4 pins



Main

Product or Component Type	Connector kit for Modbus TCP
Accessory / separate part type	Connector
Accessory / separate part category	Connection accessories
Accessory / separate part destination	Connector for Modbus TCP cable

Complementary

Range Compatibility	Lexium ILS Lexium ILE Lexium ILA
Product compatibility	IL.2
Communication interface	Modbus TCP
Kit composition	1 female connector M12 4 pins (D-coded)
Net Weight	0.22 lb(US) (0.1 kg)

Ordering and shipping details

Category	18289-LEXIUM INTEGRATED DRIVES ACC
Discount Schedule	PC56
GTIN	3389118367777
Returnability	No
Country of origin	CZ

Packing Units

Unit Type of Package 1	PCE
Number of Units in Package 1	1
Package 1 Height	0.39 in (1.0 cm)
Package 1 Width	3.94 in (10.0 cm)
Package 1 Length	7.87 in (20.0 cm)
Package 1 Weight	3.53 oz (100.0 g)

Offer Sustainability

California proposition 65	WARNING: This product can expose you to chemicals including: Lead and lead compounds, which is known to the State of California to cause cancer and birth defects or other reproductive harm. For more information go to www.P65Warnings.ca.gov
RECh Regulation	RECh Declaration
RECh free of SVHC	Yes
EU RoHS Directive	Pro-active compliance (Product out of EU RoHS legal scope) EU RoHS Declaration
Toxic heavy metal free	Yes
Mercury free	Yes

China RoHS Regulation	China RoHS Declaration
RoHS exemption information	Yes
PVC free	Yes

Contractual warranty

Warranty	18 months
----------	-----------
