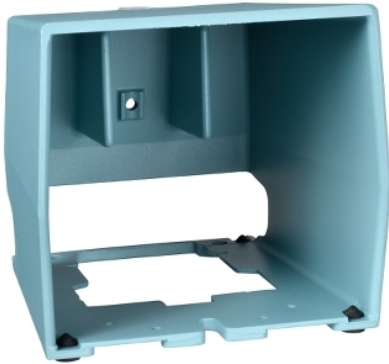


Product data sheet

Characteristics

XPEZ901

Harmony XPE, Single protective cover for foot switch, metal, blue



Main

Range of Product	Harmony XPE
Accessory / separate part designation	Single protective cover
Accessory / separate part type	Protective cover
Accessory / separate part category	Separate parts Replacement parts
Product Compatibility	XPEM
Accessory / separate part destination	Metal foot switch

Complementary

Net Weight	2.65 lb(US) (1.2 kg)
------------	----------------------

Ordering and shipping details

Category	22472-PUSHBUTTON, FOOT SWITCHES
Discount Schedule	I
GTIN	3389110600391
Returnability	Yes
Country of origin	MA

Packing Units

Unit Type of Package 1	PCE
Number of Units in Package 1	1
Package 1 Height	6.89 in (17.500 cm)
Package 1 Width	7.87 in (20.000 cm)
Package 1 Length	8.27 in (21.000 cm)
Package 1 Weight	2.60 lb(US) (1.180 kg)
Unit Type of Package 2	P06
Number of Units in Package 2	30
Package 2 Height	29.53 in (75.000 cm)
Package 2 Width	23.62 in (60.000 cm)
Package 2 Length	31.50 in (80.000 cm)
Package 2 Weight	106.70 lb(US) (48.400 kg)

Offer Sustainability

California proposition 65	WARNING: This product can expose you to chemicals including: Nickel compounds, which is known to the State of California to cause cancer, and Di-isodecyl phthalate (DIDP), which is known to the State of California to cause birth defects or other reproductive harm. For more information go to www.P65Warnings.ca.gov
RECh Regulation	RECh Declaration
EU RoHS Directive	Pro-active compliance (Product out of EU RoHS legal scope)
Mercury free	Yes
China RoHS Regulation	China RoHS Declaration
RoHS exemption information	Yes

Contractual warranty

Warranty	18 months
----------	-----------
