

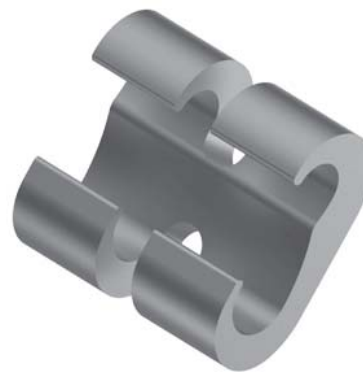
# Grounding HYGROUND® Compression

BURNDY®

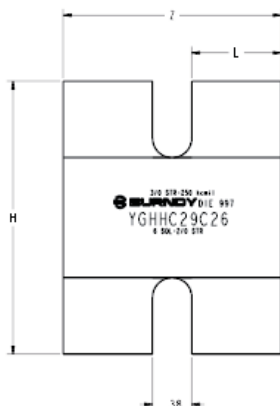
## TYPE YGHHHC-C

### HYTAP™ CONNECTOR

Irreversible compression ground tap figure "C" connectors. Accommodates all cable combinations from #6 solid through 500 kcmil. "C"-shaped opening permits placing two continuous parallel cables into conductor groove. The YGHHHC-C series is qualified to IEEE-837 2014. Prefilled with PENETROX™ compound and strip sealed.



IEEE-837



Catalog Number	Commercial Copper Cable to Cable or Cable to Ground Rod		Stranded Copper Cable Range Metric		H	L	Z	Die Index No.	Installation Data			No. of Crimps
	Run	Tap	Run	Tap					Y750/Y35/PAT750/Y39	Y45 <sup>③</sup>	Y46 <sup>④</sup>	
YGHHHC26C26	1 Str. (0.328) 2/0 Str. (0.419) 3/8" Rod	1 Str. (0.328) 2/0 Str. (0.419)	35 mm <sup>2</sup> (7.62 mm) 70 mm <sup>2</sup> (10.9 mm)	35 mm <sup>2</sup> (7.62 mm) 70 mm <sup>2</sup> (10.9 mm)	1.54 [39]	0.75 [19]	1.88 [48]	O	U-O	U-O	U-O	2
YGHHHC29C26	3/0 Str. (0.470) 250 kcmil (0.575) 1/2" or 5/8" Rod	6 Sol. (0.162) 2/0 Str. (0.419)	95 mm <sup>2</sup> (12.5 mm) 120 mm <sup>2</sup> (14.4 mm)	10 mm <sup>2</sup> (4.10 mm) 70 mm <sup>2</sup> (10.90 mm)	1.97 [50]	0.88 [22]	2.13 [54]	997	U997	U997	U997	2
YGHHHC29C29	3/0 Str. (0.470) 250 kcmil (0.575) 1/2" or 5/8" Rod	3/0 Str. (0.470) 250 kcmil (0.575)	95 mm <sup>2</sup> (12.5 mm) 120 mm <sup>2</sup> (14.4 mm)	95 mm <sup>2</sup> (12.5 mm) 120 mm <sup>2</sup> (14.4 mm)	2.06 [52]	0.88 [22]	2.13 [54]	997	U997	U997	U997	2
YGHHHC34C26	300 kcmil (0.630) 500 kcmil (0.813) 3/4" Rod	6 Sol. (0.162) 2/0 Str. (0.419)	150 mm <sup>2</sup> (16 mm) 240 mm <sup>2</sup> (20.35 mm)	10 mm <sup>2</sup> (4.10 mm) 70 mm <sup>2</sup> (10.90 mm)	2.42 [62]	0.88 [22]	2.13 [54]	1011	U1011	S1011	P1011	4
YGHHHC34C29 <sup>⑥</sup>	300 kcmil (0.630) 500 kcmil (0.813)	3/0 Str. (0.470) 250 kcmil (0.575)	150 mm <sup>2</sup> (16 mm) 240 mm <sup>2</sup> (20.35 mm)	95 mm <sup>2</sup> (12.5 mm) 120 mm <sup>2</sup> (14.4 mm)	2.67 [68]	0.88 [22]	2.13 [54]	1011	U1011	S1011	P1011	4
YGHHHC34C34	300 kcmil (0.630) 500 kcmil (0.813)	300 kcmil (0.630) 500 kcmil (0.813)	150 mm <sup>2</sup> (16 mm) 240 mm <sup>2</sup> (20.35 mm)	150 mm <sup>2</sup> (16 mm) 240 mm <sup>2</sup> (20.35 mm)	2.91 [74]	1.10 [28]	2.58 [66]	1011	U1011	S1011	P1011	6

② For ground rod to wire applications, ground rod must be precrimped; see table for appropriate precrimp dies

③ Where a "U" or "PU" die is recommended with the Y45 HYPRESS™, a PT6515 adapter must be used

④ Where a "U" or "PU" die is recommended with the Y46 HYPRESS™, a PUADP-1 adapter must be used

⑥ These connectors cannot be installed with the Y35 or Y39 HYPRESS™

Ground Rod Dia.	PRECRIMP Dies	
1/2"	UPRECRIMP 12	U2CABT
5/8"	UPRECRIMP 58	
3/4"	UPRECRIMP 34	