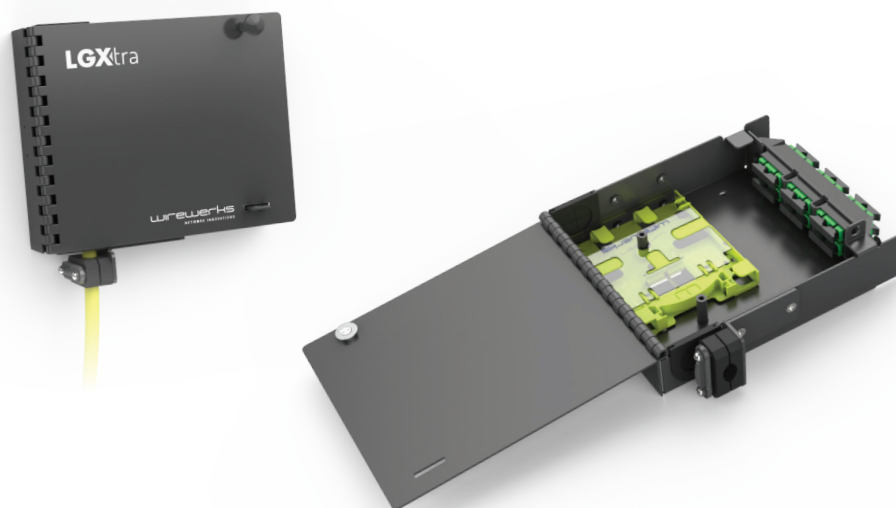


# LGXtra™

## COMPACT WALL MOUNT ENCLOSURE

PDS-0243



### DESCRIPTION

Wirewerks' **LGXtra Compact Wall Mount Enclosure** is a robust, compact LGX-style wall mount enclosure supporting one (1) LGX-style single adapter strip or one (1) keystone multi-media single adapter strip. The LGXtra Compact Wall Mount Enclosure also supports on-board fusion splicing via an optional Wirewerks Mini-Splice Tray (PDS-0240).

The enclosure features top and bottom cable entry points with rubber grommets to protect cables and control dust ingress. Incoming cables are held securely in place with Wirewerks' unique CableGrip™ accessory that eliminates the performance impairments that may occur with the use of traditional cable-ties. The LGXtra Compact Wall Mount Enclosure is pre-drilled and reinforced for DIN rail mounting (DIN rail bracket not included), and the enclosure provides secure access control through an optional external pad lock (not included).

*Wirewerks' LGXtra™ product portfolio is a complete family of LGX-style rack mount patch panels, wall mount enclosures, modules, adapter strips and accessories. All Wirewerks LGXtra™ products comply with standard LGX-style form factor, footprint and functionality specifications, allowing complete interoperability and interchangeability between all LGXtra™ and LGX-style modules, strips, panels and enclosures. Wirewerks LGXtra™ products bring powerful new features and capabilities to generic LGX-style equivalents, allowing users to selectively update, modernize and expand their existing LGX-style infrastructure -- extending operational lifespan, protecting original investment, and increasing ROI.*

**FEATURES  
and BENEFITS**

- Compact LGX-style wall mount enclosure with new LGXtra™ features and innovations
- Interoperable/interchangeable/compatible with all generic LGX-style adapter strips (single strip configurations)
- Up to 12/24 SC/LC ports per enclosure (determined by LGX-style single adapter strip)
- Compatible with LGX-style keystone multi-media adapter strips (single strip configurations)
- Optional, removable Wirewerks Mini-Splice Tray (PDS-0240) for on-board fusion splicing with integrated fiber routing, bend radius protection and strain-relief
- Exclusive, CableGrip™ accessory secures incoming cable without risking performance impairments associated with cable-tie attachments
- Pre-drilled and reinforced for DIN35 rail mounting (bracket not included)
- Pre-drilled for wall mount installations (wood screws included)
- Top and bottom cable entry complete with rubber grommets to protect cables and control dust ingress
- Left-hinged front door with magnetic closure opens completely for unrestricted interior access
- Secure access control with an optional external pad lock (not included)
- Precision engineered and manufactured from 16 gauge high-strength CRS steel with attractive, durable black satin finish
- Two (2) self-adhesive port identification labels, and one (1) industry standard optical fiber hazardous material warning label included

**APPLICATIONS**

The LGXtra Compact Wall Mount Enclosure may be used in any existing or new LGX-style fiber management system in virtually any vertical market application.

Premise Networks	Data Centers	Broadband	
		Wireline	Wireless
Enterprise	Corporate	HeadEnd	Base Stations
Commercial	Colo	Central Office	FTT Antenna
Healthcare	Multi-Tenant	PON	IBW Antenna
Educational	Disaster Recovery	MDU	
		PoP	
		Backhaul	

**ORDERING INFORMATION**

Part Number	Description
PP-WM1S	LGXtra™ Compact Wall Mount Enclosure, Black

**INCLUDED**

Part Number	Description
PP-WM1S	1 Instruction Manual
	4 Wood Screws, 10" x 0.75"
	2 Self-Adhesive Port ID Labels
	1 Warning Label

**PACKAGING and SHIPPING**

Description	Dimensions	Shipping Weight
Cardboard Box, 1 Unit per Box	8.50" x 8.50" x 3.25" (216mm x 216mm x 95mm)	2.60 lbs (1.18 kg)

**PHYSICAL SPECIFICATIONS**

Parameter	Value
Dimensions	7.4" x 6.1" x 1.6" (188mm x 155mm x 41mm)
Weight	2.20 lbs (1.00 kg)
Materials (plastics, metals, etc.)	16 Gauge Cold Rolled Steel (CRS)
Color & Finish	Black Satin

**MECHANICAL SPECIFICATIONS**

Parameter	Value
Operating Temperature	-25° to 40°C (-13° to 104°F)
Storage Temperature	-25° to 55°C (-13° to 131°F)
Relative Humidity	≤ 85% (30° C)

**STANDARDS  
COMPLIANCE**

**TIA-569-B**

Commercial Building Standard  
for Telecommunications Pathways and Spaces

**UL 94**

Tests for Flammability of Plastic Material  
for Parts in Devices and Appliances

**CEA/EIA-310-E**

Cabinets, Racks, Panels and  
Associated Equipment Standard

**RoHS**

Directive on Restriction of Hazardous Substances

**ANSI/TIA/EIA-606-A**

Administration Standard  
for Telecommunications Infrastructure