

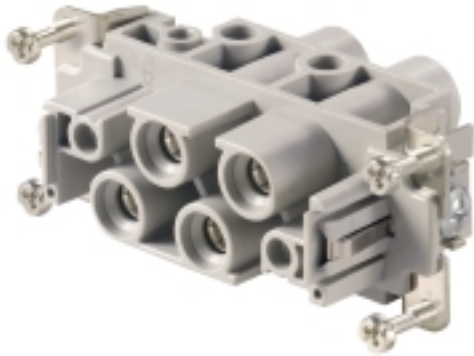
**HDC S4/2 FS****Weidmüller Interface GmbH & Co. KG**

Klingenbergstraße 26

D-32758 Detmold

Germany

www.weidmueller.com



The MixMate series of connectors can simultaneously transmit high rated currents and voltages as well as signals.

The wire connection level is designed for screw connections.

Screw connection.

**General ordering data**

|            |  |
|------------|--|
| Version    | HDC insert, Female, 830 V, 80 A, Number of poles: 6, Screw connection, Size: 6 |
| Order No.  | <a href="#">1023230000</a>   |
| Type       | HDC S4/2 FS  |
| GTIN (EAN) | 4032248739301  |
| Qty.       | 1 pc(s).   |

## HDC S4/2 FS

Weidmüller Interface GmbH &amp; Co. KG

Klingenbergstraße 26

D-32758 Detmold

Germany

www.weidmueller.com

## Technical data

## Dimensions and weights

|            |         |                 |            |
|------------|---------|-----------------|------------|
| Depth      | 84.5 mm | Depth (inches)  | 3.327 inch |
| Height     | 46.2 mm | Height (inches) | 1.819 inch |
| Width      | 34 mm   | Width (inches)  | 1.339 inch |
| Net weight | 109 g   |                 |            |

## Temperatures

|                   |                   |
|-------------------|-------------------|
| Limit temperature | -40 °C ... 125 °C |
|-------------------|-------------------|

## Dimensions

|                  |         |                   |         |
|------------------|---------|-------------------|---------|
| Height of socket | 46.2 mm | Total length base | 84.5 mm |
| Width            | 34 mm   |                   |         |

## General data

|                                      |             |                              |   |
|--------------------------------------|-------------|------------------------------|---|
| BG                                   | 6           | Colour                       | beige   |
| Free from halogens                   | true        | Insulating material          | PC glass-fibre reinforced (UL-listed and railway-certified) |
| Insulating material group            | IIIa        | Insulation strength          | 10 <sup>10</sup> Ω  |
| Low smoke acc. DIN EN 45545-2        | Yes         | Material                     | Copper alloy  |
| Number of poles                      | 6           | Number of power contacts     | 4   |
| Number of signal contacts            | 2           | Plugging cycles, silver      | ≥ 500   |
| Pollution severity                   | 3           | Rated current (DIN EN 61984) | 80 A  |
| Rated impulse voltage (DIN EN 61984) | 8 kV        | Rated voltage (DIN EN 61984) | 830 V   |
| Rated voltage according to UL/CSA    | 600 V AC/DC | Series                       | MixMate   |
| Size                                 | 6           | Surface finish               | Silver passivated   |
| Type                                 | Female      | Type of connection           | Screw connection  |
| UL 94 flammability rating            | V-0         | Volume resistance            | ≤1 mΩ   |

## Connection data PE

|                                       |              |                                       |                    |
|---------------------------------------|--------------|---------------------------------------|--------------------|
| Blade size, slotted (PE connection)   | SD 1.2 x 6.5 | Connection type PE                    | Screw connection   |
| Fixing screw                          | M 5          | Rated cross-section                   | 16 mm <sup>2</sup> |
| Stripping length PE connection        | 13 mm        | Tightening torque, max. PE connection | 2.5 Nm             |
| Tightening torque, min. PE connection | 2 Nm         | Wire cross section, AWG (PE), max.    | AWG 6              |
| Wire cross section, AWG (PE), min.    | AWG 20       |                                       |                    |

## Power contact

|   |                     |
|---|---------------------|
| Clamping range, power contact, max.         | 16 mm <sup>2</sup>  |
| Clamping range, power contact, min.         | 1.5 mm <sup>2</sup> |
| Number of poles, performance contact        | 4                   |
| Rated current (DIN EN 61984), power contact | 80 A                |

## HDC S4/2 FS

**Weidmüller Interface GmbH & Co. KG**

Klingenbergstraße 26

D-32758 Detmold

Germany

[www.weidmueller.com](http://www.weidmueller.com)

## Technical data

|   |                                   |        |
|---|-----------------------------------|--------|
| Rated current power circuit (UR)                    | Wire connection cross section AWG | AWG 14 |
|   | Rated current                     | 30 A   |
|   | Wire connection cross section AWG | AWG 12 |
|   | Rated current                     | 35 A   |
|   | Wire connection cross section AWG | AWG 10 |
|   | Rated current                     | 50 A   |
|   | Wire connection cross section AWG | AWG 8  |
|   | Rated current                     | 70 A   |
| Rated current power circuit (cUR)                   | Wire connection cross section AWG | AWG 6  |
|   | Rated current                     | 80 A   |
|   | Wire connection cross section AWG | AWG 14 |
|   | Rated current                     | 15 A   |
|   | Wire connection cross section AWG | AWG 12 |
|   | Rated current                     | 25 A   |
|   | Wire connection cross section AWG | AWG 10 |
|   | Rated current                     | 29 A   |
| Rated current signal circuit (UR)                   | Wire connection cross section AWG | AWG 8  |
|   | Rated current                     | 33 A   |
|   | Wire connection cross section AWG | AWG 6  |
|   | Rated current                     | 35 A   |
|   | Wire connection cross section AWG | AWG 14 |
|   | Rated current                     | 16 A   |
|   | Wire connection cross section AWG | AWG 14 |
|   | Rated current                     | 12 A   |
| Rated impulse voltage (DIN EN 61984), power contact | 8 kV                              |        |
| Rated voltage (DIN EN 61984), power contact         | 830 V                             |        |
| Stripping length, performance contact               | 15 mm                             |        |
| Tightening torque, max.                             | 2.2 Nm                            |        |
| Tightening torque, min.                             | 0.5 Nm                            |        |
| Type of connection, power contact                   | Screw connection                  |        |

### Signal contact

|                                      |                                   |        |
|--------------------------------------|-----------------------------------|--------|
| AF size                              | SD 0.6 x 3.5                      |        |
| Clamping range, signal contact, max. | 2.5 mm <sup>2</sup>               |        |
| Clamping range, signal contact, min. | 0.5 mm <sup>2</sup>               |        |
| Number of poles, signal              | 2                                 |        |
| Rated current (DIN EN 61984), signal | 16 A                              |        |
| Rated current power circuit (UR)     | Wire connection cross section AWG | AWG 14 |
|                                      | Rated current                     | 30 A   |
|                                      | Wire connection cross section AWG | AWG 12 |
|                                      | Rated current                     | 35 A   |
|                                      | Wire connection cross section AWG | AWG 10 |
|                                      | Rated current                     | 50 A   |
|                                      | Wire connection cross section AWG | AWG 8  |
|                                      | Rated current                     | 70 A   |
| Rated current power circuit (UR)     | Wire connection cross section AWG | AWG 6  |
|                                      | Rated current                     | 80 A   |

## HDC S4/2 FS

**Weidmüller Interface GmbH & Co. KG**

Klingenbergstraße 26

D-32758 Detmold

Germany

www.weidmueller.com

## Technical data

|  |                                   |        |
|--|-----------------------------------|--------|
| Rated current power circuit (cUR)            | Wire connection cross section AWG | AWG 14 |
|  | Rated current                     | 15 A   |
|  | Wire connection cross section AWG | AWG 12 |
|  | Rated current                     | 25 A   |
|  | Wire connection cross section AWG | AWG 10 |
|  | Rated current                     | 29 A   |
|  | Wire connection cross section AWG | AWG 8  |
|  | Rated current                     | 33 A   |
| Rated current signal circuit (UR)            | Wire connection cross section AWG | AWG 14 |
|  | Rated current                     | 16 A   |
| Rated current signal circuit (cUR)           | Wire connection cross section AWG | AWG 14 |
|  | Rated current                     | 12 A   |
| Rated impulse voltage (DIN EN 61984), signal | 6 kV                              |        |
| Rated voltage (DIN EN 61984), signal contact | 400 V                             |        |
| Stripping length, signal                     | 8 mm                              |        |
| Tightening torque, max.                      | 2.2 Nm                            |        |
| Tightening torque, min.                      | 0.5 Nm                            |        |
| Type of connection, signal                   | Screw connection                  |        |

### Version

|   |                     |   |                    |
|---|---------------------|---|--------------------|
| BG  | 6                   | Blade size, slotted (screw connection)  | SD 0.8 x 4.0       |
| Clamping screw  | M 6                 | Conductor cross-section, max.   | 16 mm <sup>2</sup> |
| Conductor cross-section, min.   | 1.5 mm <sup>2</sup> | Material  | Copper alloy       |
| Size  | 6                   | Stripping length, rated connection  | 15 mm              |
| Surface finish  | Silver passivated   | Type of connection  | Screw connection   |
| Volume resistance   | ≤1 mΩ               | Wire connection cross section AWG, max.   | AWG 6              |
| Wire connection cross section AWG, min.   | AWG 16              | Wire connection cross section, finely stranded, max.                                    | 16 mm <sup>2</sup> |
| Wire connection cross section, finely stranded, min.                                    | 0.5 mm <sup>2</sup> | Wire connection cross-section, finely stranded with wire-end ferrules DIN 46228/4, max. | 16 mm <sup>2</sup> |
| Wire connection cross-section, finely stranded with wire-end ferrules DIN 46228/4, min. | 0.5 mm <sup>2</sup> | Wire cross-section, solid, max.   | 16 mm <sup>2</sup> |
| Wire cross-section, solid, min.   | 0.5 mm <sup>2</sup> |   |                    |

### Classifications

|             |             |             |             |
|-------------|-------------|-------------|-------------|
| ETIM 6.0    | EC000438    | ETIM 7.0    | EC000438    |
| ETIM 8.0    | EC000438    | ETIM 9.0    | EC000438    |
| ECLASS 9.0  | 27-44-02-05 | ECLASS 9.1  | 27-44-02-05 |
| ECLASS 10.0 | 27-44-02-05 | ECLASS 11.0 | 27-44-02-05 |
| ECLASS 12.0 | 27-44-02-05 | ECLASS 13.0 | 27-44-02-05 |
| ECLASS 14.0 | 27-44-02-05 |             |             |

|                     |                         |
|---------------------|-------------------------|
| Substance           | Acetone                 |
| Chemical resistance | Resistant               |
| Substance           | Ammonia, watery         |
| Chemical resistance | Conditionally resistant |
| Substance           | Petrol                  |

Creation date November 26, 2024 12:38:07 PM CET

Catalogue status 26.11.2024 / We reserve the right to make technical changes.

**HDC S4/2 FS**

**Weidmüller Interface GmbH & Co. KG**  
 Klingenbergstraße 26  
 D-32758 Detmold  
 Germany

www.weidmueller.com

**Technical data**

|                     |                           |
|---------------------|---------------------------|
| Chemical resistance | Resistant                 |
| Substance           | Benzene                   |
| Chemical resistance | Resistant                 |
| Substance           | Diesel oil                |
| Chemical resistance | Conditionally resistant   |
| Substance           | Acetic acid, concentrated |
| Chemical resistance | Resistant                 |
| Substance           | Potassium hydroxide       |
| Chemical resistance | Conditionally resistant   |
| Substance           | Methanol                  |
| Chemical resistance | Conditionally resistant   |
| Substance           | Motor oil                 |
| Chemical resistance | Conditionally resistant   |
| Substance           | Lye, diluted              |
| Chemical resistance | Resistant                 |
| Substance           | Hydrochlorofluorocarbons  |
| Chemical resistance | Conditionally resistant   |
| Substance           | Outdoor use               |
| Chemical resistance | Conditionally resistant   |

**Environmental Product Compliance**

|                                      |   |
|--------------------------------------|---|
| RoHS Compliance Status               | Compliant with exemption  |
| RoHS Exemption (if applicable/known) | 6c  |
| REACH SVHC                           | Lead 7439-92-1 Potassium perfluorobutane sulfonate 29420-49-3   |
| SCIP                                 | b67daa31-7dca-434d-8290-da7fb52f83a2  |
| Chemical resistance                  | de.myview.objectmodel.impl.BlockImpl@237083ca de.myview.objectmodel.impl.BlockImpl@3f4b8914 de.myview.objectmodel.impl.BlockImpl@125c809c de.myview.objectmodel.impl.BlockImpl@419b072e de.myview.objectmodel.impl.BlockImpl@66d2b204 de.myview.objectmodel.impl.BlockImpl@5b294e3 de.myview.objectmodel.impl.BlockImpl@739caca9 de.myview.objectmodel.impl.BlockImpl@6aa77783 de.myview.objectmodel.impl.BlockImpl@1916ba41 de.myview.objectmodel.impl.BlockImpl@892200c de.myview.objectmodel.impl.BlockImpl@1efd2c53 de.myview.objectmodel.impl.BlockImpl@4f375b60 |

**Approvals**

Approvals



|                         |            |
|-------------------------|------------|
| ROHS                    | Conform    |
| UL File Number Search   | UL Website |
| Certificate No. (cURus) | E92202     |

**Data sheet****HDC S4/2 FS**

**Weidmüller Interface GmbH & Co. KG**  
Klingenbergstraße 26  
D-32758 Detmold  
Germany

[www.weidmueller.com](http://www.weidmueller.com)

**Technical data****Downloads**

---

|   |  |
|---|--|
| Approval/Certificate/Document of Conformity | <a href="#">Manufacturer's declaration</a>                             |
| Engineering Data                            | <a href="#">CAD data – STEP</a>  |
| Catalogues                                  | <a href="#">Catalogues in PDF-format</a>                               |
| Brochures                                   | <a href="#">FL FIELDWIRING EN</a><br><a href="#">FL FIELDWIRING EN</a> |

---

**HDC S4/2 FS**

**Weidmüller Interface GmbH & Co. KG**  
Klingenbergstraße 26  
D-32758 Detmold  
Germany

[www.weidmueller.com](http://www.weidmueller.com)

**Drawings**

