



FEDERAL SIGNAL

Safety and Security Systems / Industrial

MODELS 131ST and 131DST

**INSTRUCTION SHEET FOR FEDERAL MODELS 131ST AND 131DST 24 VDC
AND 120 VAC STARFIRE® STROBE LIGHT**

MODELOS 131ST y 131DST

**HOJA DE INSTRUCCIONES PARA LUZ DE DESTELLO STARFIRE® 24VCC
Y 120VCA MODELOS FEDERAL 131ST Y 131DST**

MODÈLES 131ST et 131DST

**FICHE D'INSTRUCTIONS POUR LES MODÈLES DE PHARE A
IMPULSIONS STARFIRE® FEDERAL 131ST ET
131DST 24V CC ET 120V CA**

INSTRUCTION SHEET FOR FEDERAL MODELS 131ST AND 131DST 24 VDC AND 120 VAC STARFIRE® STROBE LIGHT

I. INSTALLATION.

SAFETY MESSAGE TO INSTALLERS

NOTE

Installation, maintenance and disposal of this product must be carried out in accordance with national codes and standards.

It is important to follow all instructions shipped with this product. This device is to be installed by a trained electrician who is thoroughly familiar with and will follow all applicable national and local codes in the country of use.

This device should be considered a part of the warning system and not the entire warning system.

The selection of the mounting location for the device, its controls and the routing of the wiring is to be accomplished under the direction of the facilities engineer and the safety engineer. In addition, listed below are some other important safety instructions and precautions you should follow:

- Read and understand all instructions before installing or operating this equipment.
- Do not connect this light to the system when power is on.
- After installation, ensure that all set screws and threaded joints are properly tightened.
- After installation, test the light system to ensure that it is operating properly.
- After testing is complete, provide a copy of this instruction sheet to all personnel.
- Establish a procedure to routinely check the light system for proper activation and operation.

Failure to follow all safety precautions and instructions may result in property damage, serious injury, or death to you or others.

A. Unpacking.

After unpacking the unit, examine it for damage that may have occurred in transit. If the equipment has been damaged, do not attempt to install or operate it, file a claim immediately with the carrier stating the extent of the damage. Carefully check all envelopes, shipping labels and tags before removing or destroying them.

B. Mounting.

The Model 131 is supplied ready for mounting on 1/2-inch pipe, as shown in Figure 1. The lights are UL listed for indoor and outdoor use. If the light is used outdoors, it **MUST** be mounted with the base down and the dome up.

Mounting hardware and installation details are left to the installer.

NOTE

To ensure secure mounting, tighten the fixture onto the pipe to a **MINIMUM** torque of 5 ft-lb (6.8 N m).

C. Electrical Connections.

WARNING

Do not connect wires when power is applied.

1. AC Models.

The Model 131 is supplied with three leads, one black, one white, and one green/yellow lead for the AC units. Some models will have the following alternative colors: brown instead of black, and blue instead of white. Connect the black (or brown) lead to the phase side of the power source, the white (or blue) lead to the common (neutral) side of the power source, and the green/yellow lead to earth ground.

NOTE

The 120 Vac strobe units are designed to operate on both 50 and 60 Hz electrical power. Special modifications are NOT required for the two different AC line frequencies.

2. DC Models.

The DC units are supplied with two leads, one red and one black. Connect the red (+) lead to the positive power source terminal and the black (-) to the negative power source terminal.

NOTE

Polarity **MUST** be observed for operation.

II. MAINTENANCE.

SAFETY MESSAGE TO MAINTENANCE PERSONNEL

Listed below are some important safety instructions and precautions you should follow:

- Read and understand all instructions before operating this system.
- Any maintenance to the light system must be done with power turned off.
- Any maintenance to the light system must be performed by a trained electrician in accordance with all applicable national and local codes and standards in the country of use.
- Never alter the unit in any manner. Safety in hazardous locations may be endangered if additional openings or other alterations are made in units specifically designed for use in these locations.
- The nameplate, which may contain cautionary or other information of importance to maintenance personnel, should NOT be obscured in any way. Ensure that the nameplate remains readable when the housing's exterior is painted.

Failure to follow all safety precautions and instructions may result in property damage, serious injury, or death to you or others.

A. Flash Tube Replacement.

As strobe lights are used, the flash tubes begin to darken, causing the light output to decrease. This darkening is characteristic of flash tubes. Darkening will begin near the base of the tube and progress upward. Also, as flash tubes age, they may have a tendency to misfire (not fire periodically).

After extended operation, occasionally check for flash tube degradation. Should the flash tube misfire, have a noticeable decrease in light output, glow continuously or darken to a point beyond that shown in Figure 2, it should be replaced.

WARNING

High voltages are present inside the light assembly. Wait at least 5 minutes after shutting off the power before servicing this unit.

To replace the flash tube, proceed as follows:

1. Disconnect power.
2. Remove the lens by removing the two #6 Phillips pan-head screws. Carefully lift the lens away from the housing.
3. Grasp the flash tube by its base and pull it out of the socket, using a gentle rocking motion. Install a new flash tube and reassemble the light.
4. Test the light for proper operation.

B. Fuse Replacement.

To replace the fuse, proceed as follows:

1. The fuse is positioned on the component side of the P.C. board, mounted in fuse clips.
For easy removal, pry one end of the fuse out of the clip with an insulated-handled screw-driver.
2. Replace the fuse with one of the same rating only. The DC 131ST units use a 5 A, 32 V, auto-type fuse (Federal Part No. K148A142-03). The 120 Vac units use a 1 A, 250 V, slow-blow GMC-type fuse (Federal Signal Part No. K148A155-01).
3. Reassemble the light and test for proper operation.

C. Service.

The Federal Signal factory will service your equipment or provide technical assistance with any problems that cannot be handled locally.

Any units returned to Federal Signal for service, inspection, or repair must be accompanied by a Return Material Authorization. This R.M.A. can be obtained from the local Distributor or Manufacturer’s Representative.

At this time a brief explanation of the service requested, or the nature of the malfunction, should be provided.

Address all communications and shipments to:



Industrial Systems

2645 Federal Signal Drive • University Park, IL 60484-3167
Tel.: 1-708-534-4756 • 1-877-289-3246 • Fax: 1-708-534-4852
www.federalsignal-indust.com • www.fs-isys.com

D. Replacement Parts.

Description	Part Number
Dome, Clear*	K8422B428
Dome, Amber*	K8422B428-01
Dome, Blue*	K8422B428-02
Dome, Green*	K8422B428-03
Dome, Red*	K8422B428-04
Strobe Tube	K8107178
Surface-Mount Kit	K8444A211

**Includes dome gasket*

E. Optional Accessories.

Description	Part Number
Corner Bracket	LCMB2
Wall Bracket	LWMB2
Surface Mount	K8444A211

III. UNDERWRITERS LABORATORIES WARNING EXPLANATION.

“Warning-Not to be used as a visual public mode alarm notification appliance”



WHAT DOES THIS MEAN?

Underwriters Laboratories uses two different standards to investigate and List visual signal appliances. The first UL Standard for Safety is UL1971 - Signaling Devices for the Hearing Impaired. This standard covers visual signaling devices intended for fire alarm systems to alert the hearing impaired. The second UL Standard for Safety is UL1638 - Visual Signaling Appliances-Private Mode Emergency and General Utility Signaling. While this standard may also cover visual signal appliances, it does not include the determination of adequacy relative to alerting hearing-impaired individuals in a fire alarm system.

To prevent misapplication of a visual signal appliance Listed to UL1638, UL determined it is the manufacturer’s responsibility to warn the installer in the field and Authority Having Jurisdiction (AHJ) of what would be an inappropriate use of the product. Therefore, manufactures whose products Listed to UL1638 are required by Underwriters Laboratories to bear the warning, “*Warning - Not to be used as a visual public mode alarm notification appliance*”.

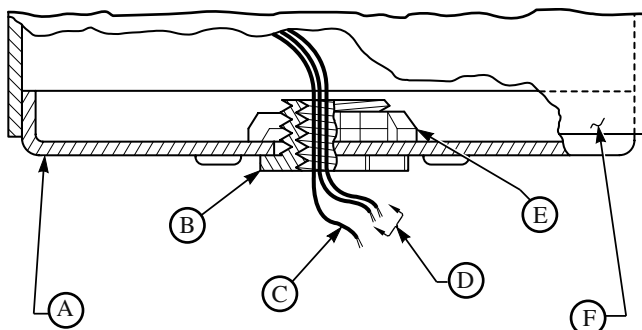
“Public Operating Mode” and “Notification Appliance” as defined in the National Fire Alarm Code, NFPA 72 is as follows:

Public Operating Mode - Audible or visible signaling to occupants or inhabitants of the area protected by the fire alarm system.

Notification Appliance - A fire alarm system component such as a bell, horn, speaker, light, or text display that provides audible, tactile, or visible outputs, or any combination thereof.

In other words, this device **should not** be used as a component of a commercial fire alarm system.

I



290A2455-01C

English

- A. Base plate
- B. Bushing, female 1/2" N.P.T.
- C. Green ground lead (AC lights only)
- D. Power leads
- E. Lockout, conduit
- F. Light housing

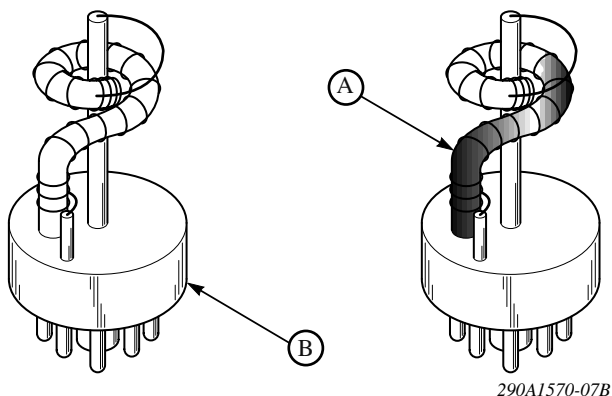
Español

- A. Placa base
- B. Manguito, hembra 1/2" N.P.T.
- C. Conductor verde a tierra (luces CA unicamente)
- D. Conectores de alimentación
- E. Tuerca de seguridad, conducto
- F. Carcasa ligera

Français

- A. Plaque de base
- B. Douille, femelle 1/2" N.P.T.
- C. Câble vert pour terre (lampes CA uniquement)
- D. Câbles d'alimentation
- E. Écrou de blocage, conduit
- F. Enceinte de lampe

2



English

A. Used flash tube tends to discolor in areas shown, and should be replaced.

B. New flash tube (K8107178)

Español

A. El tubo de destellos luminosos usado tiende a decolorarse en las áreas señaladas y debe ser substituido.

B. Tubo de destellos luminosos nuevo (K8107178)

Français

A. Un tube clignotant use a tendance a charger de couleur dans les zones indiquées et doit être remplacée.

B. Nouveau tube clignotant (K8107178)