

English

# Incandescent / Halogen 120 V Dimmer

P/N 030-477

Rated at 120 V~ 60 Hz

### Models:

- |          |           |
|----------|-----------|
| 600 W    | 1000 W    |
| D-600P   | AY-10P    |
| D-600R   | AY-10PNL  |
| D-603P   | AY-103P   |
| DL-600PL | AY-103PNL |
| DL-603PL | DL-10PL   |
| DNG-600P | DL-103PL  |
| DNG-603P | GL-10P    |
| GL-600   | GL-1000   |
| GL-600P  | GL-103P   |
| GL-603P  | LG-10P    |
| LG-600P  | LG-600P   |
| LG-603P  | LG-103P   |
| LX-600PL | LX-10PL   |
| LX-603PL | LX-103PL  |
| OS-600P  | OS-10P    |
| OS-603P  | OS-103P   |
| S-600    | S-10P     |
| S-600P   | S-10PNL   |
| S-600PNL | S-1000    |
| S-603P   | S-103P    |
| S-603PNL | S-103PNL  |
| SW-600   | TG-10P    |
| SW-600P  | TG-10PNL  |
| SW-603P  | TG-103P   |
|          | TG-103PNL |

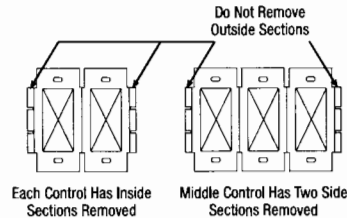
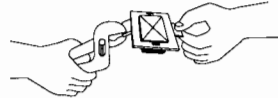
## Important Notes

Please read before installing.

- CAUTION:** Use only with permanently-installed 120 V incandescent or halogen fixtures. To avoid overheating and possible damage to other equipment, do not use to control receptacles, fluorescent lighting fixtures, motor-driven appliances, or transformer-supplied appliances.
- Install in accordance with all national and local electrical codes.
- Only one dimmer can be used in a 3-way circuit.
- When no "grounding means" exist within the wallbox then NEC® 2005, Article 404-9 allows a dimmer without a grounding connection to be installed as a replacement, as long as a plastic, noncombustible wallplate is used. For this type of installation, cap or remove the green ground wire on the dimmer and use an appropriate wallplate such as Lutron's Claro® or Fassada® series wallplates.
- For new installations, install a test switch before installing the dimmer.
- Protect dimmer from dust and dirt when painting or spackling.
- Recommended minimum load is 40 W.
- It is normal for the dimmer to feel warm to the touch during operation.
- Clean dimmer with a *soft damp cloth only*. Do not use any chemical cleaners.

## Multigang Installations

When installing more than one control in the same wallbox, it may be necessary to remove all inner side sections prior to wiring (see below). If pre-installed, remove the Lutron wallplate and wallplate adapter from dimmer. Using pliers, bend side section up and down until it breaks off. Repeat for each side section to be removed. Removal of dimmer side sections reduces maximum load capacity. Refer to chart below for maximum dimmer capacity.



## Dimmer Capacity Chart

Dimmer Rating	No sides removed	1 side removed	2 sides removed
600 W	600 W	500 W	400 W
1000 W	1000 W	800 W	650 W

## Technical Assistance

If you have questions concerning the installation or operation of this product, call the **Lutron Technical Support Center**. Please provide exact model number when calling.

**U.S.A. and Canada (24 hrs/7days)**  
1-800-523-9466

Fax +1-610-282-6311

Other countries 8am – 8pm ET  
+1-610-282-3800

<http://www.lutron.com>

## Limited Warranty (valid only in the U.S.A., Canada, Puerto Rico, and the Caribbean.)

Lutron will, at its option, repair or replace any unit that is defective in materials or manufacture within one year after purchase. For warranty service, return unit to place of purchase or mail to Lutron at 7200 Suter Rd., Coopersburg, PA 18036-1299, postage pre-paid. **THIS WARRANTY IS IN LIEU OF ALL OTHER EXPRESS WARRANTIES, AND THE IMPLIED WARRANTY OF MERCHANTABILITY IS LIMITED TO ONE YEAR FROM PURCHASE. THIS WARRANTY DOES NOT COVER THE COST OF INSTALLATION, REMOVAL OR REINSTALLATION, OR DAMAGE RESULTING FROM MISUSE, ABUSE, OR DAMAGE FROM IMPROPER WIRING OR INSTALLATION. THIS WARRANTY DOES NOT COVER INCIDENTAL OR CONSEQUENTIAL DAMAGES. LUTRON'S LIABILITY ON ANY CLAIM FOR DAMAGES ARISING OUT OF OR IN CONNECTION WITH THE MANUFACTURE, SALE, INSTALLATION, DELIVERY, OR USE OF THE UNIT SHALL NEVER EXCEED THE PURCHASE PRICE OF THE UNIT.**

This warranty gives you specific legal rights, and you may have other rights which vary from state to state. Some states do not allow the exclusion or limitation of incidental or consequential damages, or limitation on how long an implied warranty may last, so the above limitations may not apply to you.

This product may be covered by Mexican patent 168,884 and one or more of the following U.S. patents: 4,835,343; 4,835,816; 4,939,383; 4,947,054; 5,262,678; 5,359,231; 5,637,930; 6,005,308; and D342,234; and corresponding foreign patents. Lutron, Claro, Fassada, and Glyder are registered trademarks of Lutron Electronics Co., Inc. NEC is a registered trademark of the National Fire Protection Association, Quincy, Massachusetts.

© 2007 Lutron Electronics Co., Inc.

**LUTRON®**

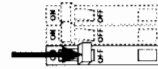
Lutron Electronics Co., Inc.  
7200 Suter Road  
Coopersburg, PA 18036-1299, U.S.A.  
Made and printed in U.S.A. 2/07 P/N 030-477 Rev. J

Lutron Technical Support Center 1-800-523-9466 24 hrs / 7 days [www.lutron.com](http://www.lutron.com)

## Installation

### 1 Turning OFF Power.

- Turn power OFF at circuit breaker (or remove fuse).

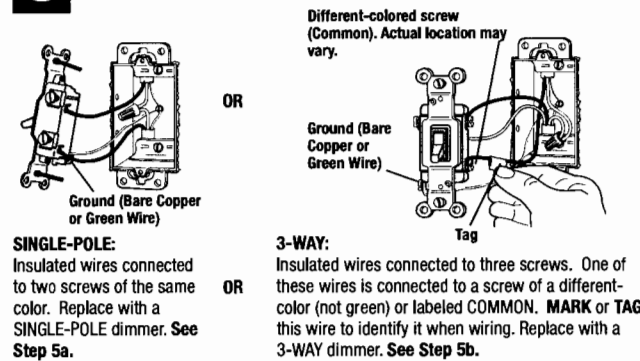


### 2 Removing Wallplate and Switch.

- Remove wallplate and switch mounting screws.
- Carefully remove switch from wall (do not remove wires).



### 3 Identifying the Type of Circuit.



#### SINGLE-POLE:

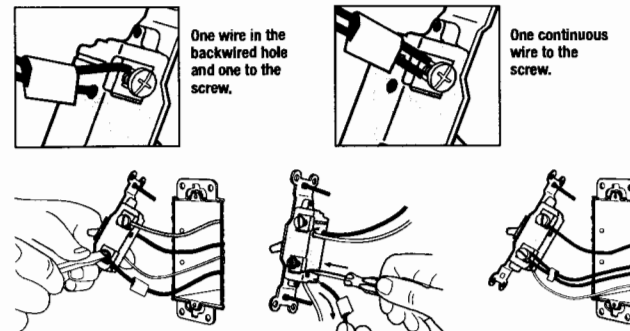
Insulated wires connected to two screws of the same color. Replace with a SINGLE-POLE dimmer. See Step 5a.

#### 3-WAY:

Insulated wires connected to three screws. One of these wires is connected to a screw of a different color (not green) or labeled COMMON, MARK or TAG this wire to identify it when wiring. Replace with a 3-WAY dimmer. See Step 5b.

### 4 Disconnecting Switch Wires.

**Important Note:** Your wall switch may have two wires attached to the same screw (see illustrations below for examples). Tape these two wires together before disconnecting. When wiring, connect both wires to the Dimmer wire in Step 5.



Screw Terminals:  
Turn screws to loosen.

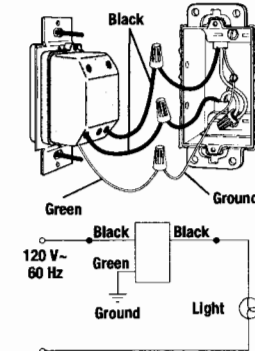
Push-in Terminals:  
Insert screwdriver. Pull wire out.

Looped Wire:  
Turn screw to loosen.

### 5 Wiring the Dimmer.

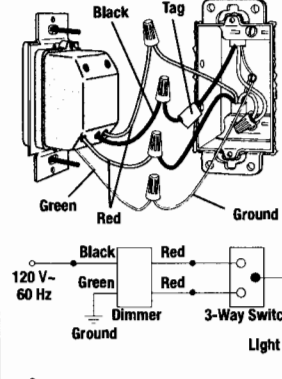
- For installations involving more than one control in a wallbox, refer to the section on Multigang Installations before beginning.
- Note:** Wire location will vary by product. Reference wires by color, not location.

#### 5a - Single-Pole Wiring



- Connect the **green** dimmer ground wire to the green or bare copper ground wire in the wallbox. (See Important Note 4.)
- Connect one of the **black** dimmer wires to either of the wires removed from the switch.
- Connect the remaining **black** dimmer wire to the other wire removed from the switch.
- Note:** To use a 3-Way dimmer (one black and two red wires) in a single-pole application, cap off one of the red wires and follow instructions for single-pole wiring. (If the on/off switch works backwards, switch the red wires.)

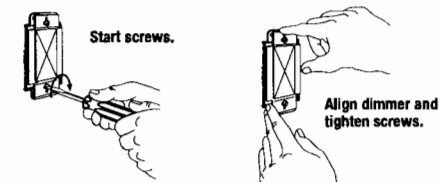
#### 5b - 3-Way Wiring



- NOTE:** Only one dimmer can be used in a 3-WAY circuit.
- Connect the **green** dimmer ground wire to the green or bare copper ground wire in the wallbox. (See Important Note 4.)
- Connect the **black** dimmer wire to the wire removed from the different-colored screw on the switch (marked or tagged wire). Remove tag from wire.
- Connect one of the **red** dimmer wires to either of the remaining wires removed from the switch.
- Connect the remaining **red** dimmer wire to the remaining wire removed from the switch.

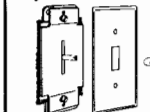
### 6 Mounting Dimmer to Wallbox.

- Form wires carefully into the wallbox, mount and align dimmer.
- Install wallplate.

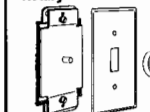


**Note:** To install a traditional style wallplate, firmly pull the *Glyder*, or *Rotary knob* to remove it. Install the wallplate and re-attach the knob.

*Glyder*



*Rotary*



### 7 Turning ON Power.

- Turn power ON at circuit breaker (or replace fuse).

