

User's guide

TR1310-120/240GA

Slave unit for floor heating thermostat

sinopé

Technical specifications of your slave unit TR1310-120/240GA

Operating voltage:
120/208/240 VAC, 50/60 Hz

Maximum load:
15A / 1800W @ 120 VAC
15A / 3120W @ 208 VAC
15A / 3600W @ 240 VAC
Resistive load only

Storage: -20 °C to 50 °C (-4 °F to 122 °F)



The slave unit is designed to increase the maximum load permitted by the master thermostat. The master thermostat will be able to control multiple sections of floor heating that will be operated by one of more slave units.

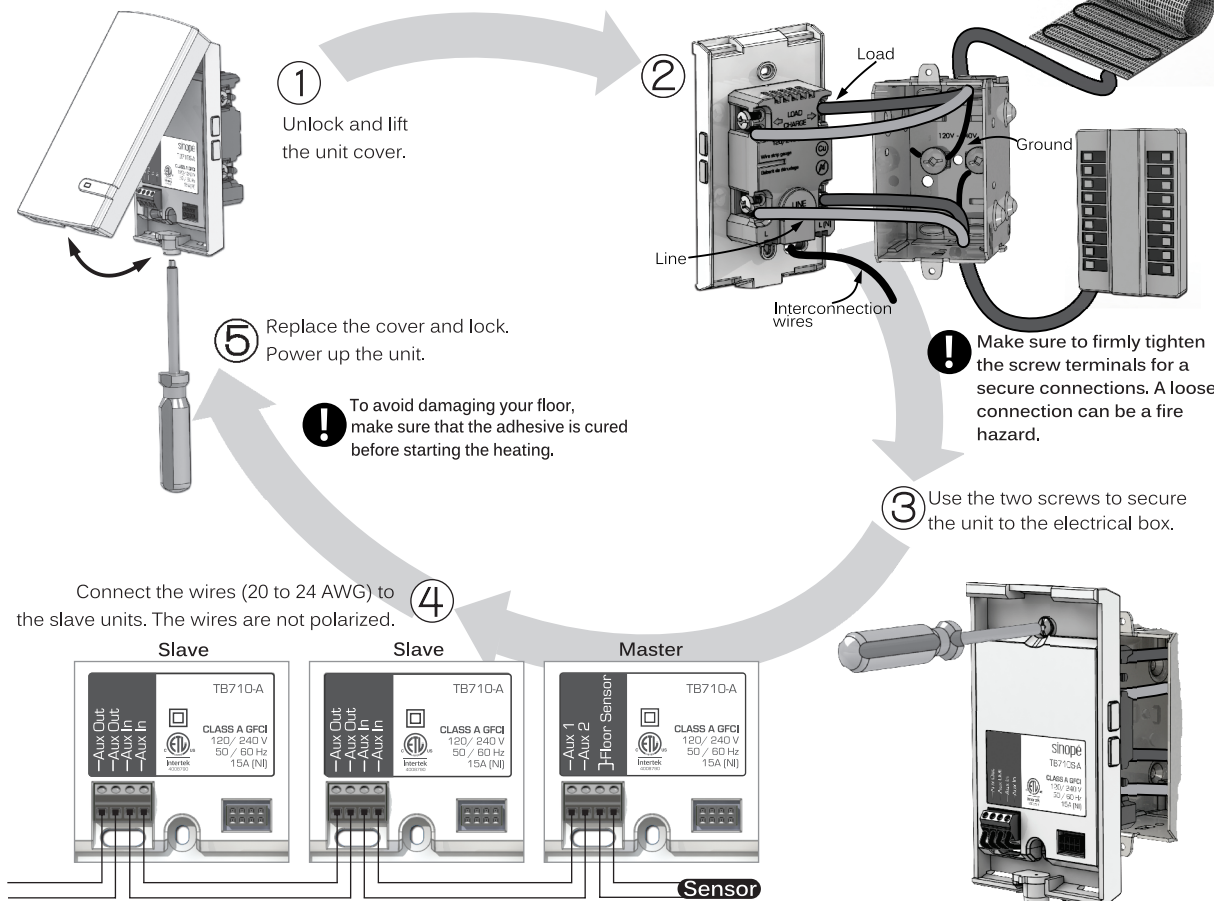
Warnings

The installation of this slave unit should be made by a certified electrician and must be installed in conformity with the national and local Electrical Codes.



Since you are a valuable customer, before starting the installation of your new slave unit, please make sure that the breakers for your heating system are off at the main electrical panel!

Install your slave unit



Grounding protection verification

The slave unit is equipped with an automatic verification of ground fault circuit interrupter (GFCI). You can force a test by following these steps:
Press the TEST button for 5 seconds to activate the automatic test. If the button is lit, press the RESET button to reactivate the protection. If the button does not light, the test failed. Put the breaker off at the electrical panel and have an electrician verify your installation. Repeat these steps for all slave units.

It is recommended to test the GFCI monthly to ensure proper operation of protection against earth leakage.

Reset protection against earth leakage

If the RESET button lights (red) during a normal operation of the thermostat, reset the protection against earth leakage as follows:
Press the RESET button, the light will turn off.
If the fault occurs again, put the breaker off at the electrical panel and have an electrician verify your installation.

3-year limited warranty

SINOPÉ TECHNOLOGIES INC. warrants the components of their products against defects in material and workmanship for a 3 year period from the date of purchase, under normal use and service, when proof of purchase of such is provided to the manufacturer. This warranty does not cover any transportation costs that may be incurred by the consumer. Nor does it cover a product subjected to misuse or accidental damage. The obligation of Sinopé Technologies Inc., under the terms of this warranty, will be to supply a new unit and this releases the manufacturer from paying the installation costs or other secondary charges linked to replacing the unit or the components.