

WIREMOLD



DS4000 Raceway Base & Cover

INSTALLATION INSTRUCTIONS

Installation Instruction No.: 43324 – December 2005

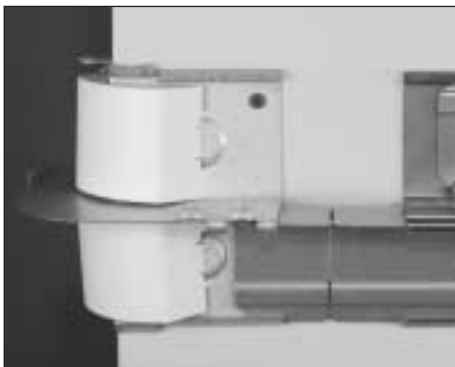
Wiremold / Legrand Electrical Systems conform to and should be installed and properly grounded in compliance with requirements of the current National Electrical Code, Canadian Electrical Code, or codes administered by local authorities.

All electrical products may represent possible shock or fire hazard if improperly installed or used. Wiremold electrical products are UL listed to U.S. and Canadian safety standards, made for interior use only, and should be installed in conformance with current local and/or the National Electrical Code.

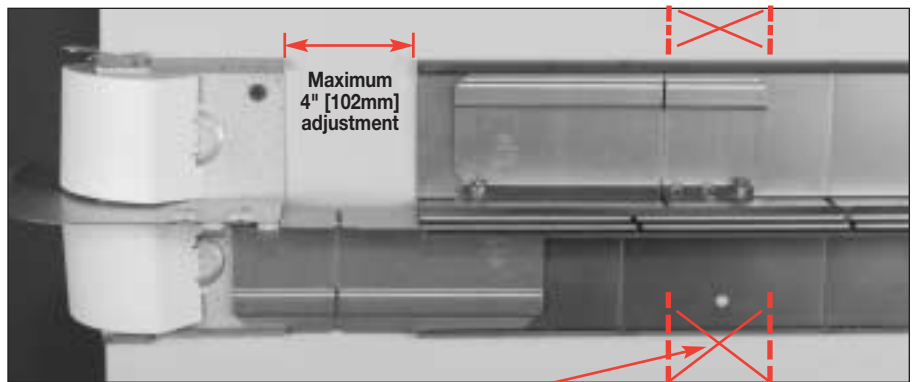


Products Covered: DS4000B, DS4000C.

Step 1. If the installation requires Fittings, start at an appropriate location such as a corner. Refer to specific fitting installation instructions for proper mounting.



Step 2. Leaving Coupling loose, mate DS4000 Base section to installed Fitting. Using up to 4" [102mm] of lateral adjustment provided by Couplings, align Mounting Hole with Wall Stud. Secure to wall using #8 Fasteners 48" [1.2m] apart. Tighten Coupling Screws.

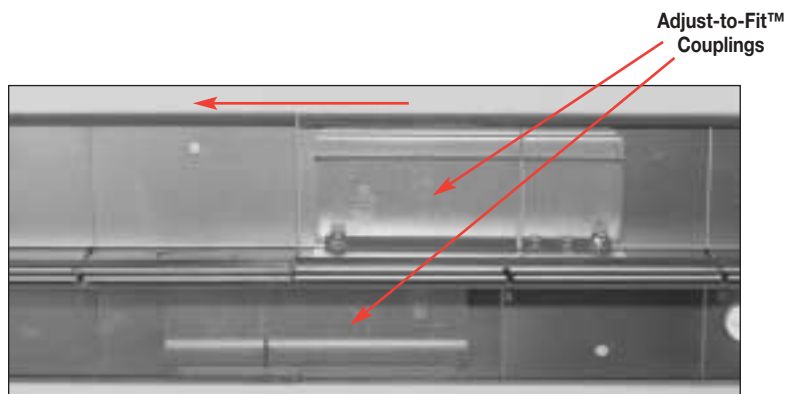


Stud Location



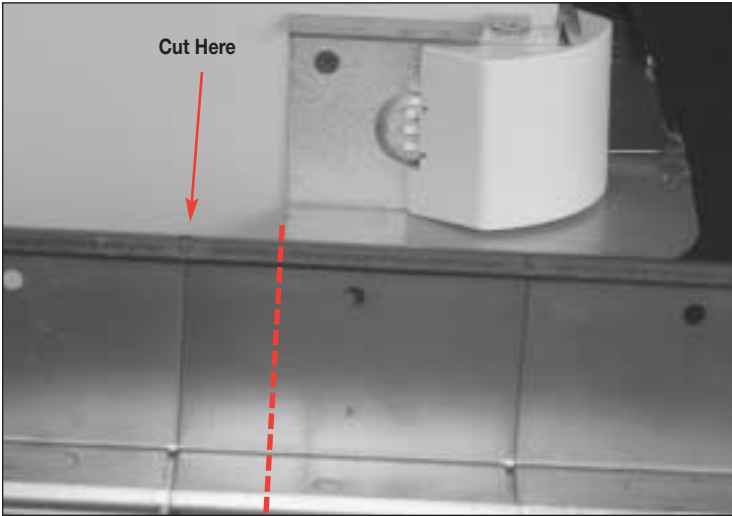
NOTE: Raceway Base includes Couplings and Wire Clips. Wire Clips are factory installed in the lower channel of each Raceway Base section. Make sure base sections are properly oriented prior to securing to the wall.

Step 3. Butt succeeding DS4000 Base Sections tightly to installed base in order to maintain hole alignment. Slide Couplings into place and tighten.

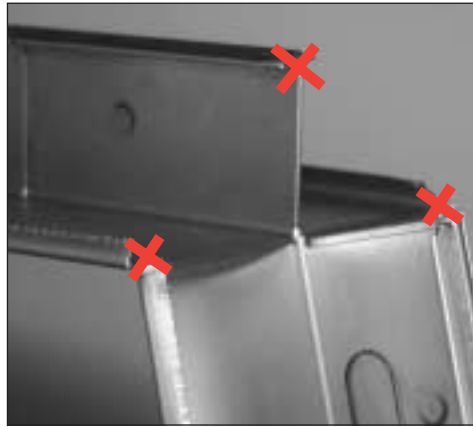


For more information, visit www.wiremold.com/ds4000.

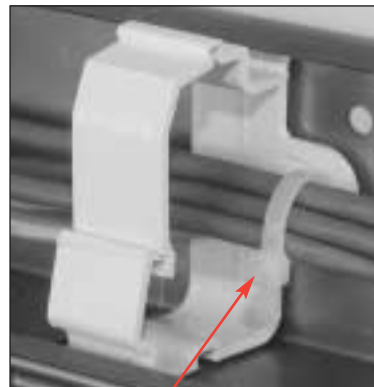
Step 4. Install the next fitting. Measure and cut DS4000 Base at the closest score short of the fitting. Install DS4000 Base and tighten Coupling screws.



Use scores on DS4000 Raceway Base to make cuts – Snip where shown and bend along scored line to break.



Wire Clip Installation – Additional Wire Clips are provided for the upper channel of the Raceway.



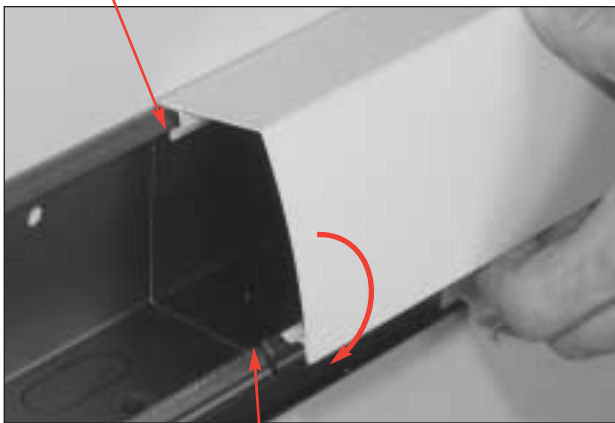
Rotate clip and snap into place.

Wire Ties can be added if desired.

DS400C Cover Installation:

Step 1.

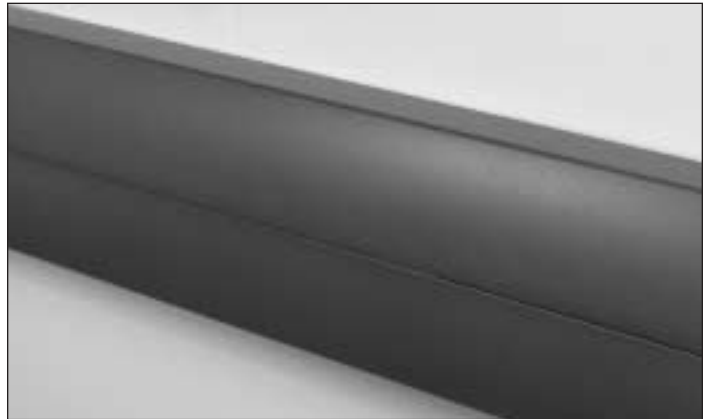
Hook Cover into Base Section.



Snap Cover into place to complete installation.

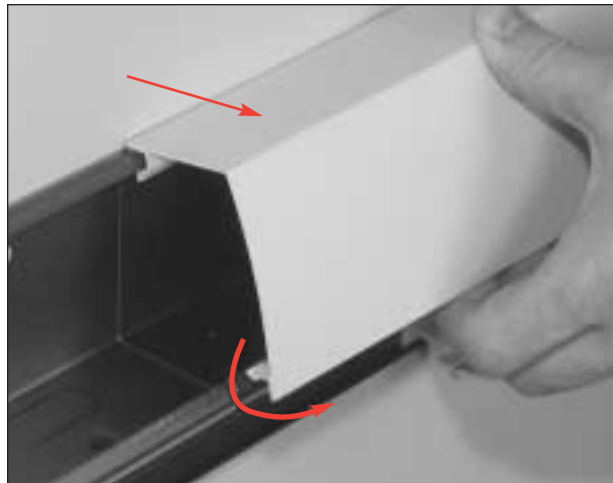
Step 2.

Installation Complete.



DS400C Cover Removal

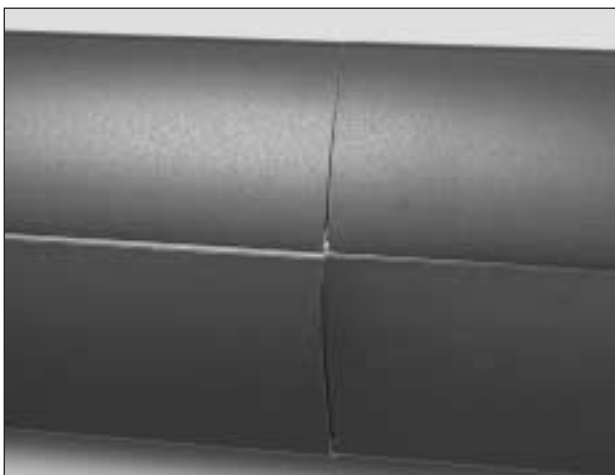
All Fittings and Activation Covers/Faceplates overlap the DS400C Raceway Cover. To remove Raceway Cover Sections, first remove the Fitting or Faceplate (see specific fitting instructions) and then unsnap Raceway Cover Sections from Raceway Base as shown below.



DS4006 Seam Clip

Step 1.

The DS4006 Seam Clip is used to cover the cut edge of a cover section. Make sure any gaps between raceway Covers are less than 1/16" [1.5mm].



Step 2.

Installation Complete.

