

User's guide

OTH2750P (2750 W @ 240 Vac)

OTH4000P (4000 W @ 240 Vac)

Programmable thermostat



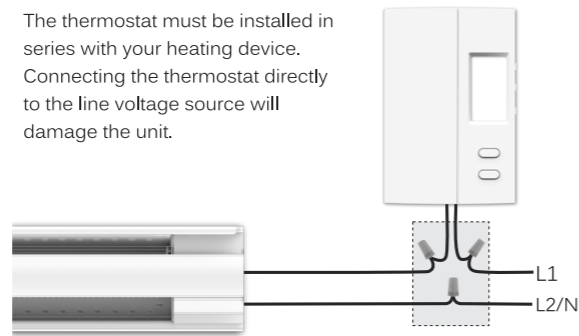
Warnings

The installation of this thermostat should be made by a certified electrician and must be installed in conformity with the national and local Electrical Codes.



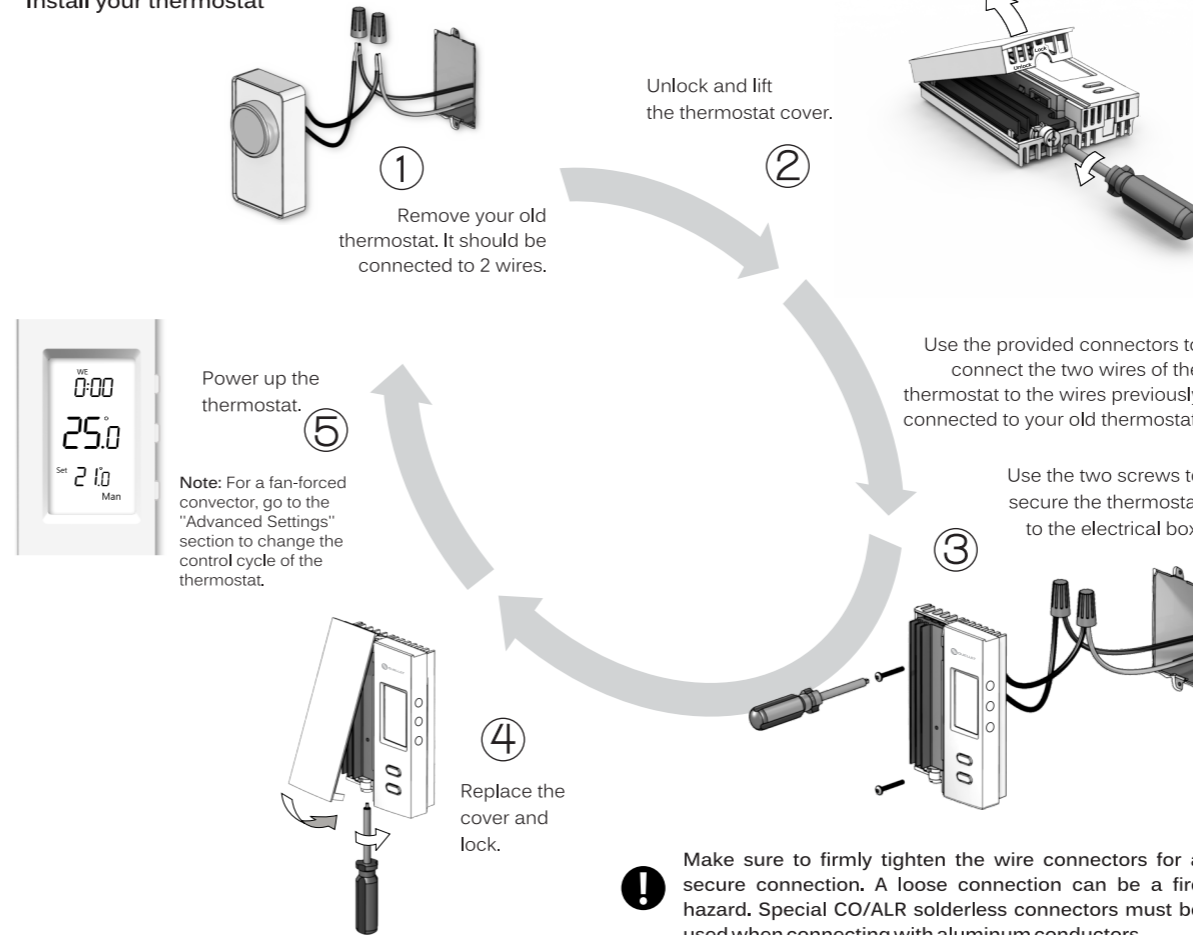
Since you are a valuable customer, before starting the installation of your new thermostat, please make sure that the breakers for your heating system are off at the main electrical panel!

The thermostat must be installed in series with your heating device. Connecting the thermostat directly to the line voltage source will damage the unit.



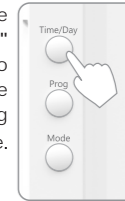
Note: The wires of this thermostat are non-polarized.

Install your thermostat



Set Date & Time

Press the "Time" button to enter the setting mode.



Press the **↑** or **↓** button to change the values of the flashing parameter.



Press the "next" button to select the next parameter.



Change the operating modes

Press the "Mode" button to select the operating mode (ECONO, AUTO or MAN).



ECONO: Used to turn off heating during summer or during an extended absence. The Econo setpoint can be modified according to the needs of the user (default 5 °C).

AUTO: The thermostat automatically changes the temperature setpoint according to your programmed schedule. Changing the setpoint while in AUTO mode will temporarily bypass the program. It will automatically return to the schedule at the next programmed period.

MAN: Changes to the temperature setpoint must be done manually.

Program your Thermostat



Hold the "prog" button for 3 seconds to enter programming mode. Period #1 (P1) for Monday (MO) to Friday (FR) will appear.



Use the "prog" button to scroll the periods (P1 to P4) of the day.

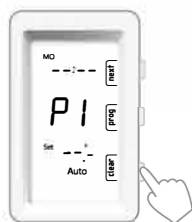


Use the "next" button to select the parameter you wish to change. The active parameter will be flashing, meaning it can be changed.

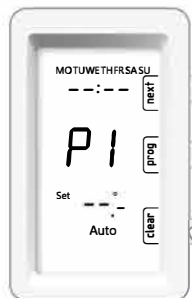


Use the ↑ or ↓ buttons to change the selected parameter.

Program your Thermostat



Use the "clear" button to erase the selected period.

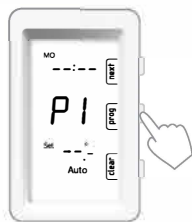


Tips:

While in programming mode, you can hold the "clear" button for 3 seconds to clear all the schedule.

Then, you can enter programs for P1 to P4 for all 7 days at the same time.

Exit programming mode and reenter if you wish to edit the new schedule day by day. (Ex.: Erase P2 and P3 for Saturday and Sunday).



Hold the "prog" button for 3 seconds to exit programming mode.

Program your Thermostat / Advanced Settings

The thermostat is preprogrammed with the following schedule:

	Week days Mo - Fr			Weekend Sa - Su		
P1	6h00	21°		P1	6h00	21°
P2	8h00	17°		P2	---	---
P3	18h00	21°		P3	---	---
P4	22h00	17°		P4	22h00	17°

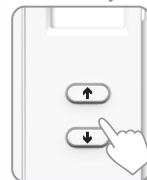
Advanced Settings

To change the thermostat's settings you need to:

Press and hold the "Mode" button for 3 seconds to access the menu.



Use the ↑ and ↓ buttons to change the setting.



Press the "next" button to select the following parameter.

Press the "Mode" button to exit the menu and return to normal display.



Advanced Settings

Order	Parameters & settings	Default Display
1	Temperature format °C or °F	TEMP °C
2	Time format 24h or 12h (default: 24h)	TIME 24H
3	Backlight OFF (active for 6 sec if a button is pressed) ON (always active) (default: OFF)	BL OFF
4	Automatic Daylight Saving Time* OFF / ON (default: ON)	DST ON
5	Programming format 5-2 or 7 (default: 5-2)	SCH 5-2
6	Early Start** OFF / ON (default: OFF)	ES OFF
7	Minimum setpoint 5 to 30 °C (default: 5)	MIN 5.0
8	Maximum setpoint 5 to 30 °C (default: 30)	MAX 30.0
9	Control Cycle SHT (short cycle for electric baseboard) FAN (long cycle for fan-forced heat)	CTL SHT
10	Keypad lock OFF / ON (default: OFF)	LOCK OFF

* When Automatic Daylight Saving Time is enabled (ON), the thermostat automatically detects DST periods and adjusts time accordingly.

** When the Early Start functionality is enabled, the thermostat determines when to start heating to obtain the desired temperature at the time set in your schedule.

Technical Specifications

Operating voltage: 120/208/240 Vac, 60 Hz

Maximum load (Resistive load only):
OTH2750P : 11.5 A / 2750 W @ 240 Vac
OTH4000P : 16.7 A / 4000 W @ 240 Vac

Minimum load:
1.25 A / 3000 W @ 240 Vac

Setpoint range: 5 °C to 30 °C (41 °F to 86 °F)

Display range: 0 °C to 70 °C (32 °F to 99 °F)

Resolution: ± 0.5 °C (± 1 °F)

Storage: -20 °C to 50 °C (-4 °F to 122 °F)

Compatible with an electric heating system such as:

- Baseboard heater
- Convector (short cycle)
- Fan-forced convector (long cycle)

Three (3) years limited warranty

QUELLET CANADA INC. warrants the components of the OTH2750P & OTH4000P against defects in material and workmanship for a three (3) year period from the date of purchase, under normal use and service, when proof of purchase of such is provided to the manufacturer. The obligation of Ouellet Canada Inc., under the terms of this warranty, will be to supply a new unit and this releases the manufacturer from paying the installation costs or other secondary charges linked to replacing the unit or the components.



If you have any questions on the product, call our technical support team at:
180, 3e Avenue, L'Islet (Quebec) G0R 2C0 CANADA
Téléphone : 1 800 463-7043 · (418) 247-3947
Télécopieur : 1 800 662-7801 · (418) 247-7801
www.ouellet.com · info@ouellet.com