

Fan/Light Controls

Rated at 120 V~ 60 Hz

AY2-LFSQ: Fan: 1.5 A, Light: 300 W
TG2-LFSQ: Fan: 1.5 A, Light: 300 W

S2-LF: Fan: 2.5 A, Light: 300 W
S2-LFSQ: Fan: 1.5 A, Light: 300 W
S2W-LFSQ: Fan: 1.5 A, Light: 300 W

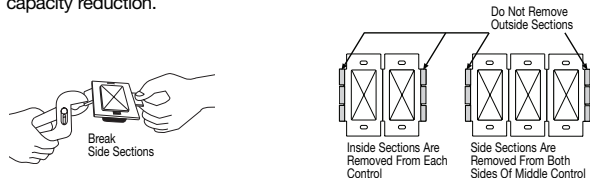
Important Notes

Please read before installing.

- CAUTION:** To avoid overheating and possible damage to other equipment, do not use to control receptacles, fluorescent lighting fixtures, or transformer-supplied appliances.
- Controls require separate wires in the wallbox for fan and light.
- For new installations, wire a test switch before installing the control.
- Set multispeed fans to their highest setting before installing controls.
- Use an AY2-LFSQ, S2-LFSQ, S2W-LFSQ or TG2-LFSQ control with a ceiling paddle fan only. Use only one ceiling paddle fan per control.
- Use an S2-LF only with fans marked "Suitable for use with solid-state fan-speed controls."
- Do not wire an AY2-LFSQ, S2-LFSQ, S2W-LFSQ or TG2-LFSQ in circuit with a GFCI breaker/receptacle.
- Controls may feel warm to the touch during normal operation.
- When no "grounding means" exist within the wallbox then the NEC® 2008, Article 404.9 allows a dimmer without a grounding connection to be installed as a replacement, as long as a plastic, noncombustible wallplate is used. For this type of installation, cap or remove the green ground wire on the dimmer and use an appropriate wallplate such as Lutron's Claro® series wallplates.
- Install in accordance with all national and local electrical codes.
- Clean control with a **soft damp cloth only**. Do not use any chemical cleaners.
- For indoor use only.
- Controls must be mounted vertically. See stamp on control for correct positioning.

Multi-Unit Installations

When combining controls in a wallbox, remove all inner side sections before wiring (see below). Use pliers to bend each side section up and down until it breaks off. S2-LF controls require reduction of their capacity. Refer to chart below for maximum capacity. Other fan-speed controls (-LFSQ) do not require capacity reduction.



Model Number	Load	No Sides Removed	1 Side Removed	2 Sides Removed
S2-LF	Fan/Light	2.5 A/300 W	2.1 A/250 W	1.7 A/200 W

Technical Assistance

If you have questions concerning the installation or operation of this product, call the **Lutron Technical Support Center**. Please provide exact model number when calling. 1.800.523.9466 (U.S.A., Canada, and the Caribbean)
 Other countries call +1.610.282.3800
 Fax +1.610.282.6311 Internet: www.lutron.com

Limited Warranty

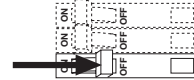
(Valid only in U.S.A., Canada, Puerto Rico, and the Caribbean.)

Lutron will, at its option, repair or replace any unit that is defective in materials or manufacture within one year after purchase. For warranty service, return unit to place of purchase or mail to Lutron at 7200 Suter Rd., Coopersburg, PA 18036-1299, postage pre-paid.
THIS WARRANTY IS IN LIEU OF ALL OTHER EXPRESS WARRANTIES, AND THE IMPLIED WARRANTY OF MERCHANTABILITY IS LIMITED TO ONE YEAR FROM PURCHASE. THIS WARRANTY DOES NOT COVER THE COST OF INSTALLATION, REMOVAL OR REINSTALLATION, OR DAMAGE RESULTING FROM MISUSE, ABUSE, OR DAMAGE FROM IMPROPER WIRING OR INSTALLATION. THIS WARRANTY DOES NOT COVER INCIDENTAL OR CONSEQUENTIAL DAMAGES. LUTRON'S LIABILITY ON ANY CLAIM FOR DAMAGES ARISING OUT OF OR IN CONNECTION WITH THE MANUFACTURE, SALE, INSTALLATION, DELIVERY, OR USE OF THE UNIT SHALL NEVER EXCEED THE PURCHASE PRICE OF THE UNIT.
 This warranty gives you specific legal rights, and you may have other rights which vary from state to state. Some states do not allow the exclusion or limitation of incidental or consequential damages, or limitation on how long an implied warranty may last, so the above limitations may not apply to you.
 This product may be covered by one or more of the following U.S. patents: 5,191,971; 5,262,678; 5,359,231; 5,637,930; and corresponding foreign patents. Lutron is a registered trademark of Lutron Electronics Co., Inc. NEC is a registered trademark of the National Fire Protection Association, Quincy, Massachusetts. © 2008 Lutron Electronics Co., Inc.

Installation

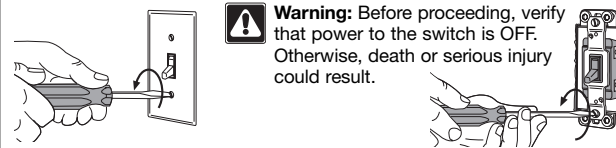
For installations involving more than one control in a wallbox, refer to Multi-Unit Installations before beginning.

1 WARNING: Turn power OFF at circuit breaker or remove fuse.



2 Removing wallplate and switch.

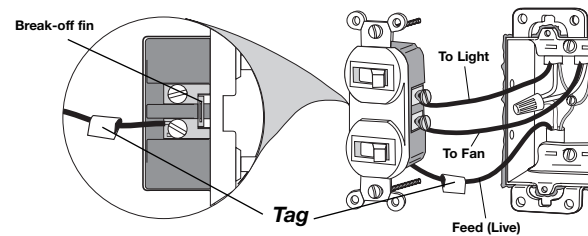
- Remove wall plate and switch mounting screws.
- Carefully remove switch from wall (**do not remove wires**).



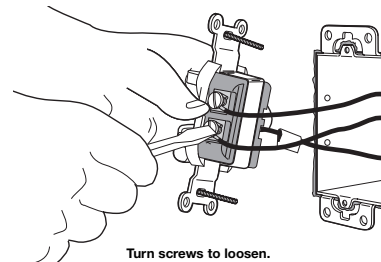
3 Verify application.

This dimmer mounts in a single-gang wallbox and independently controls a ceiling paddle fan and a light with each slider. Independent wire must be provided for the fan and light in addition to the feed wire (Live).

Tag the wire that is connected to the feed side of the switch (the side with the break-off fin).



4 Disconnect switch wires.



Important Wiring Information

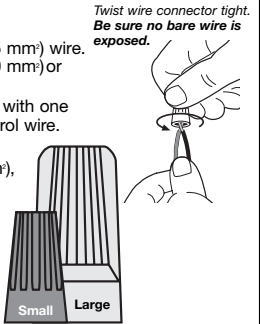
When making wire connections, follow the recommended strip lengths and combinations for the supplied wire connectors. **Note:** Wire connectors provided are suitable for **copper wire only**. For aluminum wire, consult an electrician.

Small:

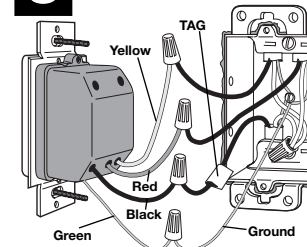
Strip insulation 3/8 in (10 mm) for 14 AWG (1.5 mm) wire.
 Strip insulation 1/2 in (13 mm) for 16 AWG (1.0 mm) or 18 AWG (0.75 mm) wire.
 Use to join one 14 AWG (1.5 mm) supply wire with one 16 AWG (1.0 mm) or 18 AWG (0.75 mm) control wire.

Large:

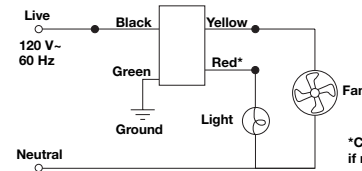
Strip insulation 1/2 in (13 mm) for 10 AWG (6 mm), 12 AWG (2.5 mm), or 14 AWG (1.5 mm) wire.
 Strip insulation 5/8 in (16 mm) for 16 AWG (1.0 mm) or 18 AWG (0.75 mm) wire.
 Use to join one or two 12 AWG (2.5 mm), 14 AWG (1.5 mm) supply wires with one 10 AWG (6 mm), 12 AWG (2.5 mm), 14 AWG (1.5 mm), 16 AWG (1.0 mm), or 18 AWG (0.75 mm) control wire.



5 Wire the control.

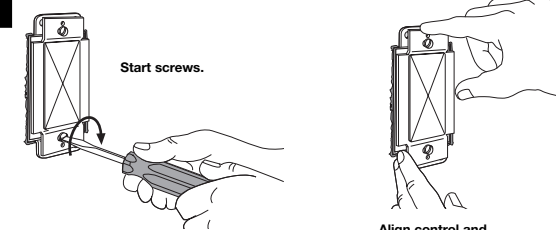


- Connect the green ground wire on the control to the bare copper or green ground wire in the wallbox.
- Connect the black wire on the control to the tagged wallbox wire removed from the switch (feed wire from the circuit breaker or fuse box).
- Connect the yellow wire on the control to the wire leading to the fan.
- Connect the red wire on the control to the wire leading to the light.



*Cap off Red wire if no light is used.

6 Mount and align control. Install wallplate.



7 Turn power ON.

