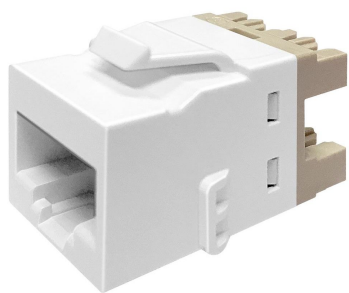


760237652 | UKJ600-A.WHT



Uniprise UKJ Series Keystone Modular Jack, RJ45, category 6, T568A /T568B, unshielded, without dust cover, white

Product Classification

Regional Availability	North America
Portfolio	Uniprise®
Product Type	Modular jack
Product Series	UKJ Series

General Specifications

ANSI/TIA Category	6
Cable Type	Unshielded
Color	Alpine white Alpine white
Conductor Type	Solid Stranded
Integrated Dust Cover Type	None
Mounting Note	Color matches with KJ-style Alpine white or Pro white Faceplates and Surface Mount Boxes
Termination Type	IDC
Wiring	T568A T568B

Dimensions

Compatible Conductor Gauge, solid	22 AWG 24 AWG
Compatible Conductor Gauge, stranded	24 AWG 26 AWG

Electrical Specifications

Contact Resistance Variation, maximum	20 mOhm
Contact Resistance, maximum	100 mOhm
Current Rating at Temperature	1.5 A @ 20 °C 1.5 A @ 68 °F
Dielectric Withstand Voltage, RMS, conductive surface	1,500 Vac @ 60 Hz

760237652 | UKJ600-A.WHT

Dielectric Withstand Voltage, RMS, contact-to-contact	1,000 Vac @ 60 Hz
Insulation Resistance, minimum	500 MOhm
Remote Powering	Fully supports the safe delivery of power over LAN cabling described by IEEE 802.3bt (Type 4) and complies with the unmating under electrical load requirements prescribed by IEC 60512-99-002

Material Specifications

Contact Plating Material	Precious metals
Material Type	Copper alloy High-impact, flame retardant, thermoplastic
Termination Contact Plating	Nickel

Mechanical Specifications

Plug Insertion Life, minimum	750 times
Plug Insertion Life, test plug	IEC 60603-7 compliant plug
Plug Retention Force, minimum	133 N 29.9 lbf

Environmental Specifications

Operating Temperature	-10 °C to +60 °C (+14 °F to +140 °F)
Storage Temperature	-40 °C to +70 °C (-40 °F to +158 °F)
Relative Humidity	Up to 95%, non-condensing
Flammability Rating	UL 94 V-0
Safety Standard	UL cUL

Packaging and Weights

Packaging quantity	1
---------------------------	---

Regulatory Compliance/Certifications

Agency	Classification
CHINA-ROHS	Below maximum concentration value
ISO 9001:2015	Designed, manufactured and/or distributed under this quality management system
REACH-SVHC	Compliant as per SVHC revision on www.commscope.com/ProductCompliance
ROHS	Compliant

