



Main

| | |
|---------------------------|--------------------------------|
| Product or Component Type | Industrial Control Transformer |
| Type | TF |

Complementary

| | |
|--------------------------------|---|
| Number of Phases | 1 phase |
| Power Rating | 500 VA UL 500 VA CSA 500 VA NOM 300 VA CE |
| Primary to Secondary Voltage | 240 x 480 V 120 V 230 x 460 V 115 V 220 x 440 V 110 V |
| Fuse type | 0.41 x 1.50 in CC top |
| Temperature rise | 115 °C |
| Electrical Connection | Screw clamp terminals |
| Height | 5.13 in (130.30 mm) |
| Width | 4.5 in (114.30 mm) |
| Depth | 5.49 in (139.45 mm) |
| Material | Copper: winding |
| Fingersafe Cover Compatibility | FSC2 |

Environment

| | |
|------------------------|--|
| Product Certifications | CSA file LR37055 guide 184-N-90[RETURN]UL listed file E61239 |
| Enclosure Type | Not rated (open device) |
| Insulation temperature | 356 °F (180 °C) |

Ordering and shipping details

| | |
|-------------------|----------------------------------|
| Category | 16203-9070 TF (NOT T) 250-1000VA |
| Discount Schedule | CP8 |
| GTIN | 785901904892 |
| Returnability | Yes |
| Country of origin | MX |

The information provided in this documentation contains general descriptions and/or technical characteristics of the performance of the products contained herein. This documentation is not intended as a substitute for and is not to be used for determining suitability or reliability of these products for specific user applications. It is the duty of any such user or integrator to perform the appropriate and complete risk analysis, evaluation and testing of the products with respect to the relevant specific application or use thereof. Neither Schneider Electric Industries SAS nor any of its affiliates or subsidiaries shall be responsible or liable for misuse of the information contained herein.

Packing Units

| | |
|------------------------------|-------------------------|
| Unit Type of Package 1 | PCE |
| Number of Units in Package 1 | 1 |
| Package 1 Height | 7.60 in (19.304 cm) |
| Package 1 Width | 6.70 in (17.018 cm) |
| Package 1 Length | 6.20 in (15.748 cm) |
| Package 1 Weight | 12.70 lb(US) (5.761 kg) |

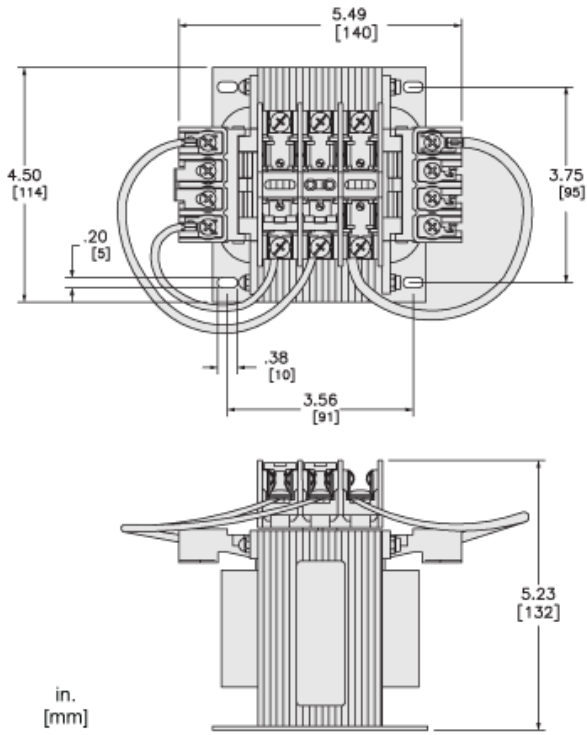
Offer Sustainability

| | |
|----------------------------|---|
| Sustainable offer status | Green Premium product |
| California proposition 65 | WARNING: This product can expose you to chemicals including: Phenyl glycidyl ether, which is known to the State of California to cause cancer and birth defects or other reproductive harm. For more information go to www.P65Warnings.ca.gov |
| REACH Regulation | REACH Declaration |
| EU RoHS Directive | Compliant with Exemptions |
| Mercury free | Yes |
| China RoHS Regulation | China RoHS Declaration |
| RoHS exemption information | Yes |
| Environmental Disclosure | Product Environmental Profile |
| Circularity Profile | No need of specific recycling operations |
| PVC free | Yes |

Contractual warranty

| | |
|----------|-----------|
| Warranty | 18 months |
|----------|-----------|

Approximate Dimensions



Connections and Wiring Diagrams
