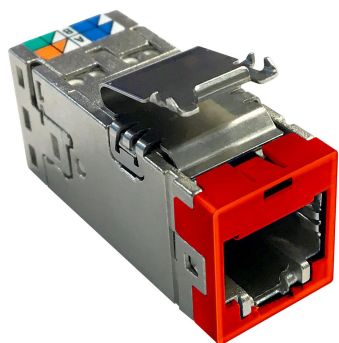


# 760238125 | USL10G-SHLD, RED



Uniprise SLX Series Modular Jack, category 6A, shielded , 4 Pair, without dust cover, red

- Fits all existing SL panels and faceplates
- Universal latch for SL series
- 9 Different color options – Replaceable color caps
- Terminated with SL Series termination tool
- Wire holder cut off during termination
- Universal wiring label
- Easy re-termination

## Product Classification

|                              |               |
|------------------------------|---------------|
| <b>Regional Availability</b> | North America |
| <b>Portfolio</b>             | Uniprise®     |
| <b>Product Type</b>          | Modular jack  |
| <b>Product Series</b>        | SLX Series    |

## General Specifications

|                                   |   |
|-----------------------------------|---|
| <b>ANSI/TIA Category</b>          | 6A  |
| <b>Cable Type</b>                 | Shielded                                  |
| <b>Color</b>                      | Red                                       |
| <b>Conductor Type</b>             | Solid   Stranded                          |
| <b>Integrated Dust Cover Type</b> | None                                      |
| <b>Mounting</b>                   | SL Series faceplates and panels           |
| <b>Outlet Type</b>                | Standard                                  |
| <b>Termination Tool</b>           | SL Termination tool                       |
| <b>Termination Type</b>           | IDC                                       |
| <b>Transmission Standards</b>     | ANSI/TIA-568-C.2   ISO/IEC 11801 Class EA |
| <b>Wiring</b>                     | T568A   T568B                             |

## Dimensions

|                                     |                                   |
|-------------------------------------|-----------------------------------|
| <b>Panel Cutout, recommended</b>    | 14.78 x 20.07 mm (0.58 x 0.79 in) |
| <b>Panel Thickness, recommended</b> | 1.6 mm   0.063 in                 |
| <b>Height</b>                       | 16.13 mm   0.635 in               |
| <b>Width</b>                        | 14.48 mm   0.57 in                |

# 760238125 | USL10G-SHLD, RED

|   |                    |
|---|--------------------|
| <b>Depth</b>  | 36.8 mm   1.449 in |
| <b>Compatible Cable Diameter, maximum</b>               | 8.5 mm   0.335 in  |
| <b>Compatible Insulated Conductor Diameter, maximum</b> | 1.6 mm   0.063 in  |
| <b>Contact Plating Thickness</b>                        | 1.27 µm            |
| <b>Compatible Conductor Gauge, solid</b>                | 26–22 AWG          |
| <b>Compatible Conductor Gauge, stranded</b>             | 26–24 AWG          |

## Electrical Specifications

|                        |  |
|------------------------|--|
| <b>Remote Powering</b> | Fully supports the safe delivery of power over LAN cabling described by IEEE 802.3bt (Type 4) and complies with the unmating under electrical load requirements prescribed by IEC 60512-99-002 |
|------------------------|--|

## Material Specifications

|                                 |                       |
|---------------------------------|-----------------------|
| <b>Contact Base Material</b>    | Beryllium copper      |
| <b>Contact Plating Material</b> | Gold                  |
| <b>Material Type</b>            | Polycarbonate   Zamak |

## Environmental Specifications

|                              |                                      |
|------------------------------|--------------------------------------|
| <b>Operating Temperature</b> | -10 °C to +60 °C (+14 °F to +140 °F) |
| <b>Flammability Rating</b>   | UL 94 V-0                            |

## Packaging and Weights

|                           |           |
|---------------------------|-----------|
| <b>Packaging quantity</b> | 24        |
| <b>Packaging Type</b>     | Bag   Box |

## Regulatory Compliance/Certifications

| <b>Agency</b> | <b>Classification</b>  |
|---------------|--|
| CHINA-ROHS    | Below maximum concentration value  |
| REACH-SVHC    | Compliant as per SVHC revision on <a href="http://www.commscope.com/ProductCompliance">www.commscope.com/ProductCompliance</a> |
| ROHS          | Compliant  |

