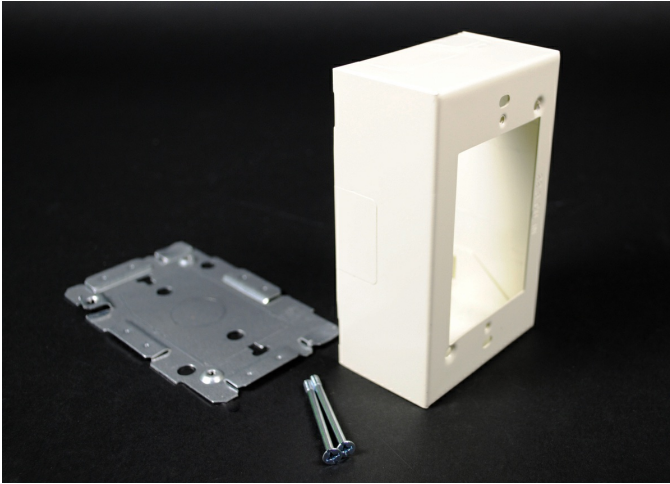




**Wiremold**  
**STL SWT & RECPT BOX 2000 IVORY**  
Part No. CV2048



Plugmold® Multioutlet Systems are available in a wide variety of lengths and fittings and in a variety of finishes to provide versatile solutions for many applications. Plugmold options include single or alternating circuits, standard or isolated ground receptacles, GFCI protection, tamper-resistant protection, USB charging, Snapicoil® harnesses of prewired receptacles, and cord-ended units. Plugmold® Multioutlet Systems are available in black or ivory ScuffCoat™ finish, painted white or gray enamel steel, stylish stainless steel, anodized aluminum and durable textured ivory nonmetallic. The painted steel product works with many types of decor and is paintable to integrate with most color schemes. Durable stainless steel and anodized aluminum Plugmold products are corrosion-resistant, making them ideal for labs.

## Features & Benefits

Cover has twistouts for 2000, 500, and 700 Series Raceway. Base has 1/2" trade size KO and rectangular KO for extension to wall box. Base has #10 threaded hole for ground connection.

## Specifications

### General Info

Product Line	Wiremold	Color	Ivory
UPC Number	786776548402	Country Of Origin	United States
Product Series	2000 Series	Application Sector	Commercial, Education, Entertainment, Healthcare, Hospitality, Retail
Warranty Type	1-Year from Installation or 2-Years from Day of Sale	Type	Device Box

### Dimensions

Product Weight US 0.05 lb

### Listing Agencies / 3rd Party Agencies

cULus ListingNumber E41751 cULus Listed Yes

### Trade Programs

---

USMCA	Yes
-------	-----

---

### Additional Information

---

RoHS Compliant	Yes
----------------	-----

---

### Technical Information

---

Indoor/Outdoor	Indoor	Mounting Type	On Surface
----------------	--------	---------------	------------

---

Voltage	300.0 V
---------	---------

---