

# E-Z Drywall Anchors

## APPLICATIONS

Electrical Fixtures	Plaques and Awards	Smoke Detectors
Thermostats	Closet Organizers	Clocks
HVAC Fixtures	Coat Racks	Kitchen Accessories
Plumbing Fixtures	Curtain Rods	Doorbells
Bathroom Accessories	Signs	Telecommunications
Shelving and Supports	Bulletin Boards	Equipment
Mirrors	Control Systems	Chalk Boards
Picture Frames	Decorative Wall Hangings	Remote Control Boxes
Brackets	Office Material Holders	

## SPECIFICATIONS

<b>Material</b>	Zinc die cast, Carbon, Steel, Nylon
<b>Drilling Capacity</b>	3/8", 1/2" and 5/8" gypsum wallboard

## PERFORMANCE TABLE

E-Z Anchors DRYWALL THICKNESS	HOLDING WEIGHT (lbs.) Gypsum Board Thickness		
	3/8"	1/2"	5/8"
EZ Mini and Mini Twist-N-Lock	30	40	50
E-Z Anchor	40	50	75
Twist-N-Lock	65	75	80
E-Z Toggle	70	85	150

These performance values are averages obtained under laboratory conditions. Note that these values will change depending on age, moisture content and surface treatment of the drywall (gypsum) material. Appropriate safety factors should be applied to these values for design purposes.

## SELECTION CHART

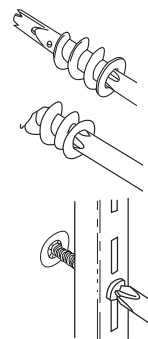
### E-Z Anchors

PART NUMBER WITH SCREWS	PART NUMBER WITHOUT SCREWS	DESCRIPTION	MATERIAL	MAXIMUM FIXTURE THICKNESS	ACCOMMODATES SHEETS METAL SCREW SIZE	BOX QTY	CASE QTY	BULK QTY
6411L	6400L <sup>B</sup>	Mini Twist-N-Lock	Nylon	3/4"	#6	100	1000	10,000
6411M	6400M <sup>B</sup>	E-Z Mini	Zinc	3/4"	#6, #7, #8	100	1000	3,000
6411	6400 <sup>B</sup>	E-Z Ancor	Zinc	3/4"	#6, #7, #8	100	1000	1,700
6411P	6400P <sup>B</sup>	E-Z Twist N Lock	Nylon	3/4"	#8	100	1000	4,500
6401	-	E-Z Toggle	Zinc	1/2"	#8	100	1000	

<sup>B</sup> Available in Bulk Pack Qty

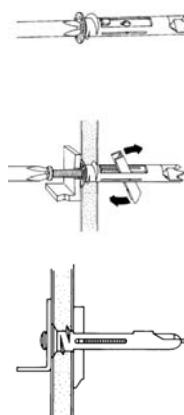
## INSTALLATION INSTRUCTIONS

### LIGHT DUTY & MEDIUM DUTY E-Z ANCORS



1. Place #2 Phillips screwdriver into recess of E-Z Zinc, E-Z Lite, E-Z Mini, E-Z Stud Solver, Twist-N-Lock, or E-Z Plastic Plus.
2. Press into drywall while turning the anchor clockwise until it is seated flush with wall.
3. Place fixture in position over installed E-Z Zinc, E-Z Lite, E-Z Mini, E-Z Stud Solver, Twist-N-Lock, or Plastic Plus. Insert screw with screw driver. Tighten fixture in place.

### HEAVY DUTY E-Z TOGGLE



1. Using a #2 Phillips screwdriver, drill the E-Z Toggle Anchor into drywall until the head of the anchor is seated flush.
2. To "set" the clamp behind the drywall, place the mounting screw into the anchor and push or tap firmly until approximately 1" of screw is protruding (do not rotate). Then remove the screw.
3. Place fixture over E-Z Toggle, insert screw and continue to turn until fastened tightly (for example when attaching a 1/2" thick fixture, it will require approx. 23 full rotations of the screwdriver to fully tighten the fixture).

