

# RGZE08P

push in socket with clamp, Harmony  
Electromechanical Relays, for RXG2 relays,  
5A, push-in terminals, separate contact



## Main

Range of Product	Harmony Electromechanical Relays
Product or Component Type	Socket
Contact terminal arrangement	Separate
Device short name	RGZ

## Complementary

Product compatibility	Plug-in relay RXG 2 C/O
Shape of pin	Flat
[Ui] Rated Insulation Voltage	250 V
[Uimp] rated impulse withstand voltage	6 KV between coil and contact with reinforced insulation 4 KV between contacts with basic insulation 4 KV between poles with basic insulation 4 kV between terminals and DIN rail with basic insulation
Line Rated Current	5 A
[Ue] rated operational voltage	250 V IEC 300 V UL
Dielectric strength	5 KV between coil and contact with reinforced insulation 2.5 KV between contacts with basic insulation 3 KV between poles with basic insulation 3 kV between terminals and DIN rail with basic insulation
Connections - terminals	Spring clamp terminals (push 'n stay), 1 x 0.5...1 x 1.5 mm <sup>2</sup> AWG 20...AWG 16) flexible with cable end Spring clamp terminals (push 'n stay), 1 x 0.5...1 x 1.5 mm <sup>2</sup> AWG 20...AWG 16) solid without cable end
Fixing mode	Clip-on 35 mm symmetrical DIN rail)
Length	3.86 in (98 mm)
Width	0.63 in (16 mm)
Height	2.64 in (67 mm)
Net Weight	0.09 lb(US) (0.042 kg)

## Environment

Ambient Air Temperature for Storage	-40...185 °F (-40...85 °C)
Ambient Air Temperature for Operation	-40...158 °F (-40...70 °C)
Standards	IEC 61984
Product Certifications	CSA[RETURN]UL[RETURN]EAC[RETURN]DNV-GL
Marking	CE
IP Degree of Protection	IP20
Overvoltage category	III
Pollution degree	3

## Ordering and shipping details

Category	21128-ZELIO ICE CUBE RELAY ACCESSORIES
Discount Schedule	CP2
GTIN	3606481465726
Returnability	Yes

## Packing Units

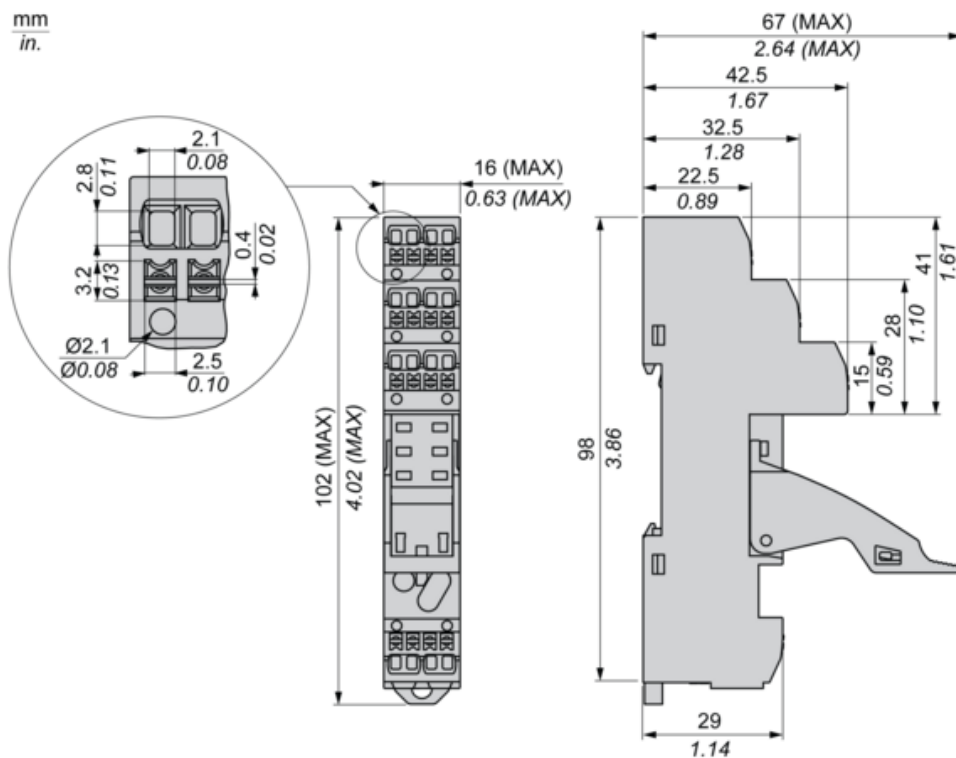
Unit Type of Package 1	PCE
Number of Units in Package 1	1
Package 1 Height	0.59 in (1.500 cm)
Package 1 Width	2.56 in (6.500 cm)
Package 1 Length	3.94 in (10.000 cm)
Package 1 Weight	1.41 oz (40.000 g)
Unit Type of Package 2	BB1
Number of Units in Package 2	10
Package 2 Height	2.95 in (7.500 cm)
Package 2 Width	4.13 in (10.500 cm)
Package 2 Length	6.50 in (16.500 cm)
Package 2 Weight	15.84 oz (449.000 g)
Unit Type of Package 3	S03
Number of Units in Package 3	160
Package 3 Height	11.81 in (30.000 cm)
Package 3 Width	11.81 in (30.000 cm)
Package 3 Length	15.75 in (40.000 cm)
Package 3 Weight	16.74 lb(US) (7.595 kg)

## Offer Sustainability

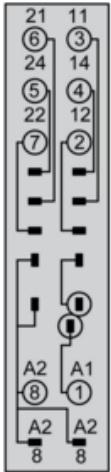
California proposition 65	WARNING: This product can expose you to chemicals including: Lead and lead compounds, which is known to the State of California to cause cancer and birth defects or other reproductive harm. For more information go to <a href="http://www.P65Warnings.ca.gov">www.P65Warnings.ca.gov</a>
REACH Regulation	<a href="#">REACH Declaration</a>
REACH free of SVHC	Yes
EU RoHS Directive	Pro-active compliance (Product out of EU RoHS legal scope) <a href="#">EU RoHS Declaration</a>
Toxic heavy metal free	Yes
Mercury free	Yes
China RoHS Regulation	<a href="#">China RoHS Declaration</a>
RoHS exemption information	<a href="#">Yes</a>
WEEE	The product must be disposed on European Union markets following specific waste collection and never end up in rubbish bins.

## Dimensions

mm  
in.



Wiring

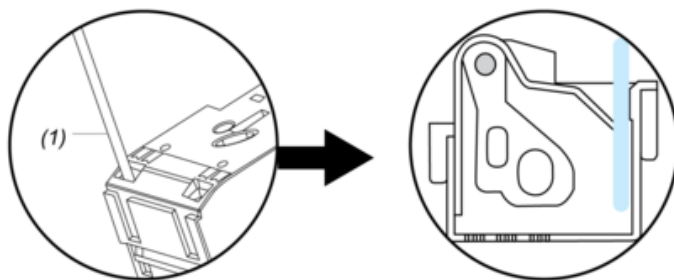


Installation



Installation

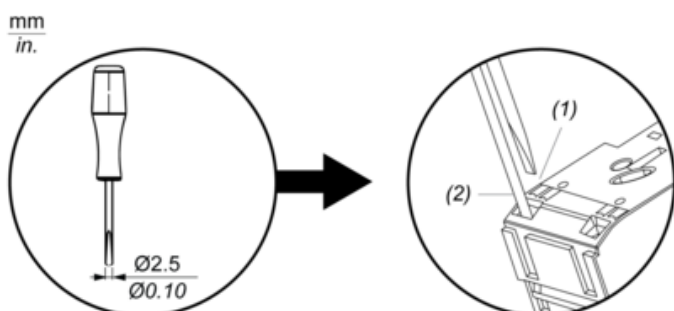
Push In (Insert Cable)



(1) : Insert Wire

Uninstallation

Pull Out (Remove Cable)



- (1) : Press
- (2) : Pull Wire