

# Product data sheet

Specifications

**SQUARE D**



Mini circuit breaker, QO Canadian, 15A, 1 pole, 120VAC, 10kA, plug in, combo ARC fault, plug on neutral, CSA

CQO115PAF

## Main

Product	Miniature circuit-breaker
Range	QO
Current Rating	15 A
Voltage Rating	120 V AC
Mounting Type	Plug-in
Number of Poles	1P
Circuit Breaker Type	Combination ARC-fault
Electrical Connection	Pressure plate
Connections Terminals	Plug-on neutral

## Complementary

Interrupt Rating	10 kA 120 V AC
Wire Size	AWG 14...AWG 8 copper AWG 12...AWG 8 aluminum
Tightening Torque	35.4 lbf.in (4 N.m)
Height	2.72 in (69.08 mm)
Width	0.75 in (19.05 mm)
Depth	4.10 in (104.14 mm)
Product weight	0.351 lb(US) (0.159 kg)

## Environment

Certifications	CSA
Ambient Rating	104 °F (40 °C)

## Packing Units

Unit Type of Package 1	PCE
Number of Units in Package 1	1
Package 1 Height	3.81 in (9.68 cm)
Package 1 Width	1.00 in (2.54 cm)
Package 1 Length	4.19 in (10.63 cm)
Package 1 Weight	6.46 oz (183.25 g)
Unit Type of Package 2	CAR

<b>Number of Units in Package 2</b>	52
<b>Package 2 Height</b>	20.69 in (52.55 cm)
<b>Package 2 Width</b>	3.82 in (9.7 cm)
<b>Package 2 Length</b>	13.62 in (34.6 cm)
<b>Package 2 Weight</b>	23.44 lb(US) (10.63 kg)

## Environmental Data

Schneider Electric aims to achieve Net Zero status by 2050 through supply chain partnerships, lower impact materials, and circularity via our ongoing “Use Better, Use Longer, Use Again” campaign to extend product lifetimes and recyclability.

[Environmental Data explained >](#)

[How we assess product sustainability >](#)

### Environmental footprint

Carbon footprint (kg CO2 eq, Total Life cycle)	10
--	----

## Use Better

### Materials and Substances

Packaging made with recycled cardboard	No
--	----

Packaging without single use plastic	Yes
--------------------------------------	-----

<a href="#">EU RoHS Directive</a>	Compliant with Exemptions
-----------------------------------	---------------------------

## Use Again

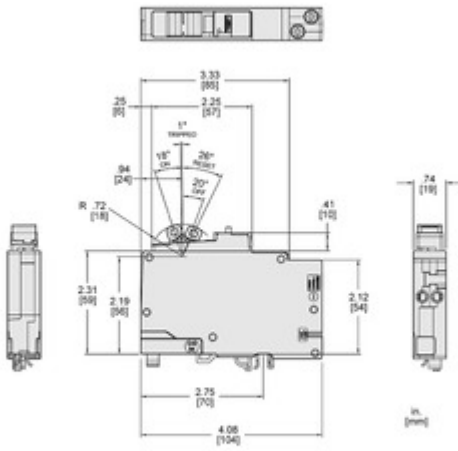
### Repack and remanufacture

Take-back	No
-----------	----

Technical Illustration

Dimensions

---



ALL DIMENSIONS ARE APPROXIMATE.  
REFER TO TECHNICAL DRAWINGS AND DOCUMENTATION FOR COMPLETE INFORMATION.

Image of product / Alternate images

Alternative

---

