

## ACT20-FEED-IN-PRO-S

**Weidmüller Interface GmbH & Co. KG**  
 Klingenbergstraße 26  
 D-32758 Detmold  
 Germany

www.weidmueller.com

### Product image



Power supply adapter modules for separate supply and distribution of the supply voltage: for the ACT20 series/MICROSERIES signal converters.

The 22.5/6.1 mm wide power-feed modules are mounted directly adjacent to the analogue signal converters. Then the 24 VDC supply voltage is optionally bridged via the CH20M (ACT20-series) rail bus or simply bridged over using the pluggable ZQV 4N (MICROSERIES) cross-connectors.

The ACT20-Feed-In-PRO-S can also detect faults coming from any of the devices mounted on the CH20 bus mounting profile.

In the event of an error or fault, the integrated status relay sends a common alarm to the external controller. In addition, two power supply units (as primary and backup supply) can be connected to the ACT20 Feed-In PRO-S. Two feed-in modules mounted to the CH20 bus mounting profile guarantee a 100% redundant power supply.

Three LEDs are used to show the status of the power supply and error messages.

The ACT20M-Feed-In PRO can also be used in Ex zone2 / Division2 applications.

### General ordering data

Version	Supply module, Distributes supply voltage to rail bus, Optional connection of backup supply
Order No.	<a href="#">8965500000</a>
Type	ACT20-FEED-IN-PRO-S
GTIN (EAN)	4032248785117
Qty.	1 pièce(s)

**ACT20-FEED-IN-PRO-S****Weidmüller Interface GmbH & Co. KG**

Klingenbergstraße 26

D-32758 Detmold

Germany

www.weidmueller.com

**Caractéristiques techniques****Dimensions and weights**

Depth	113,6 mm	Depth (inches)	4,472 inch
Height	117,2 mm	Height (inches)	4,614 inch
Width	22,5 mm	Width (inches)	0,886 inch
Net weight	173 g		

**Temperatures**

Storage temperature	-20 °C...85 °C	Ambient temperature	-20...+60 °C
Humidity	40 °C / 95 % rel. humidity, no condensation		

**Probability of failure**

SIL in compliance with IEC 61508	None
----------------------------------	------

**Input**

Backup power supply	21.6...26.4 V DC	Input current	max. 4 A
Input voltage	21.6...26.4 V DC	Number of inputs	2
Supply voltage (input)	21.6...26.4 V DC	Trigger level for the power supply	Fault <21 V DC

**Output**

Number of outputs	1	Output current	Equivalent to input current, max. 4 A
Output power	96 W	Output voltage, note	Input voltage -0.5 V DC / 4 A
Supply voltage (output)	24 V DC		

**Output (digital)**

AC power, max.	500 VA / 60 W	Alarm function	Device error, Failure of power supply, backup power supply
Continuous current	2 A	Max. switching voltage, AC	250 V
Type	Relay, 1 CO contact		

**General data**

Configuration	none	Power consumption	<2 W
Protection degree	IP20	Rail	TS 35, CH20M Bus
Voltage supply	21.6...26.4 V DC		

**Insulation coordination**

EMC standards	EN 61326-1
---------------	------------

**Connection data**

Type of connection	Screw connection	Tightening torque, min.	0,4 Nm
Tightening torque, max.	0,6 Nm	Clamping range, rated connection	2,5 mm <sup>2</sup>
Clamping range, min.	0,5 mm <sup>2</sup>	Clamping range, max.	2,5 mm <sup>2</sup>
Wire connection cross section AWG, min.	AWG 30	Wire connection cross section AWG, max.	AWG 14

Date de création 26 novembre 2024 14:03:19 CET

Niveau du catalogue 26.11.2024 / Toutes modifications techniques réservées

2

## ACT20-FEED-IN-PRO-S

Weidmüller Interface GmbH &amp; Co. KG

Klingenbergstraße 26

D-32758 Detmold

Germany

www.weidmueller.com

## Caractéristiques techniques

## Classifications

ETIM 6.0	EC001600	ETIM 7.0	EC001600
ETIM 8.0	EC001600	ETIM 9.0	EC001600
ECLASS 9.0	27-24-26-10	ECLASS 9.1	27-24-26-10
ECLASS 10.0	27-24-26-10	ECLASS 11.0	27-24-26-10
ECLASS 12.0	27-24-26-10	ECLASS 13.0	27-24-26-10
ECLASS 14.0	27-24-26-10		

## Environmental Product Compliance

RoHS Compliance Status	Compliant with exemption
RoHS Exemption (if applicable/known)	7a, 7cl
REACH SVHC	Lead 7439-92-1
SCIP	2f6dd957-421a-46db-a0c2-cf1609156924

## Important note

Product information	<p>The power-feed unit ACT20-FEED-IN-PRO-S distributes the supply voltage for the ACT20 range of devices to the Weidmüller CH20M DIN rail bus. The device also has a connection for a backup power supply. Installation is basically on the Weidmüller CH20M DIN rail bus.</p> <p>Properties</p> <ul style="list-style-type: none"> <li>• The power-feed unit ACT20-FEED-IN-PRO-S detects errors on each of the devices mounted on the Weidmüller CH20M DIN rail and sends a collective message to an external controller via the internal status relay.</li> <li>• Two power supplies for the primary and secondary supply (backup) can be optionally connected.</li> <li>• A redundant power supply can be set up using two power-feed units and two separate power supplies.</li> <li>• The status relay is activated when the following conditions are met: ◊ The supply voltage is on the connection terminals 51 and 52 ◊ The backup supply voltage is on the terminals 53 and 54. If the backup power supply is not required, the supplied jumper needs to be inserted between terminals 52 and 53. ◊ The devices mounted on the Weidmüller DIN rail do not report any errors</li> <li>• The device can be used in safe (non-explosive risk) areas or in Zone 2 / Division 2.</li> <li>• The operating status of the power supply and the backup power supply is indicated with two green LEDs.</li> <li>• A malfunction is indicated with a red LED.</li> </ul>
---------------------	---

## Approvals

Approvals



ROHS	Conform
UL File Number Search	UL Website
Certificate no. (cULus)	E337701

## Downloads

Approval/Certificate/Document of Conformity	<a href="#">Application notes – Certification ATEX</a> <a href="#">Library and function block – Certification IECEx</a> <a href="#">Application notes – Certification UL</a> <a href="#">UL certification for canada</a> <a href="#">Application notes – Declaration of Conformity</a>
Engineering Data	<a href="#">CAD data – STEP</a>
User Documentation	<a href="#">Device description – Instruction sheet</a>
Catalogues	<a href="#">Catalogues in PDF-format</a>
Brochures	

Date de création 26 novembre 2024 14:03:19 CET

Niveau du catalogue 26.11.2024 / Toutes modifications techniques réservées

3

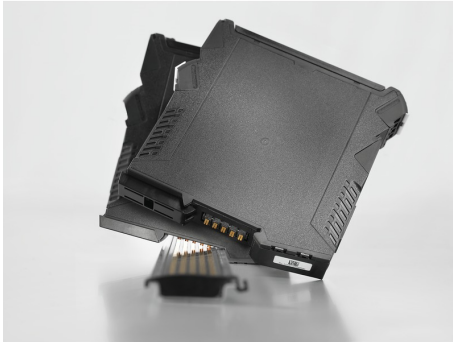
**ACT20-FEED-IN-PRO-S**

**Weidmüller Interface GmbH & Co. KG**  
 Klingenbergstraße 26  
 D-32758 Detmold  
 Germany

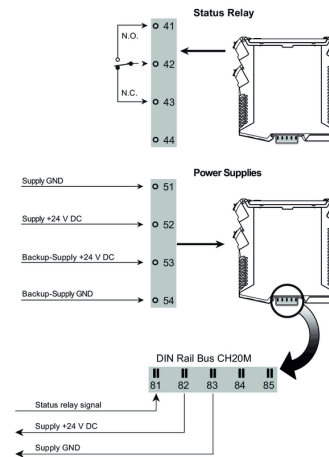
www.weidmueller.com

**Dessins**

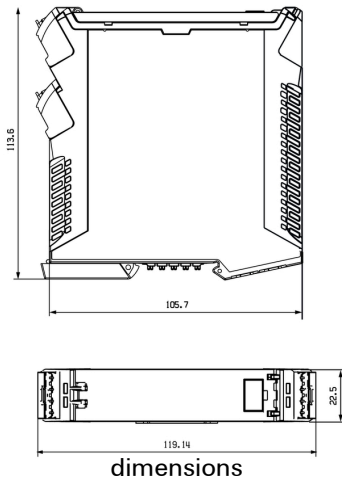
**Connection diagram**



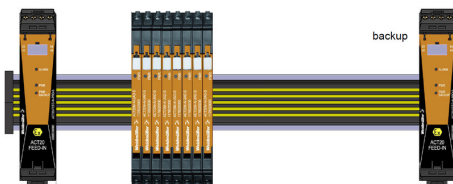
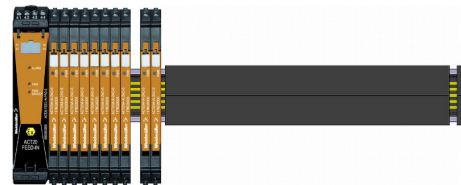
application example



**Dimensioned drawing**



dimensions



backup