

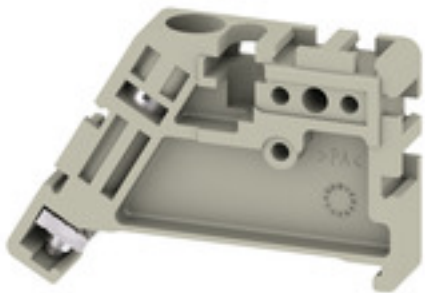
EW 35 GR 7032**Weidmüller Interface GmbH & Co. KG**

Klingenbergstraße 26

D-32758 Detmold

Germany

www.weidmueller.com

Product image

Weidmüller's range of products includes end brackets that guarantee a permanent, reliable mounting on the terminal rail and prevent sliding. Versions with and without screws are available. The end brackets include marking options, also for group markers, and also a test plug holder.

General ordering data

Version	End bracket, grey, TS 35, V-0, Wemid, Width: 9 mm, 120 °C
Order No.	0383530000
Type	EW 35 GR 7032
GTIN (EAN)	4008190027322
Qty.	50 pièce(s)

EW 35 GR 7032

Weidmüller Interface GmbH & Co. KG

Klingenbergstraße 26

D-32758 Detmold

Germany

www.weidmueller.com

Caractéristiques techniques

Dimensions and weights

Depth	27 mm	Depth (inches)	1,063 inch
Height	46 mm	Height (inches)	1,811 inch
Width	9 mm	Width (inches)	0,354 inch
Net weight	5,3 g		

Temperatures

Continuous operating temp., min.	-50 °C	Continuous operating temp., max.	120 °C
----------------------------------	--------	----------------------------------	--------

Material data

Material	Wemid	Colour	grey
UL 94 flammability rating	V-0		

System specifications

Version	For the terminals	Rail	TS 35
---------	-------------------	------	-------

Additional technical data

Installation advice	Direct mounting	Interlock	for screw fixing
Type of mounting	when screwed in		

Conductors for clamping (rated connection)

Tightening torque, max.	0,6 Nm	Tightening torque, min.	0,5 Nm
-------------------------	--------	-------------------------	--------

Dimensions

TS 35 offset	22,5 mm
--------------	---------

General

Installation advice	Direct mounting	Rail	TS 35
---------------------	-----------------	------	-------

Classifications

ETIM 6.0	EC001041	ETIM 7.0	EC001041
ETIM 8.0	EC001041	ETIM 9.0	EC001041
ECLASS 9.0	27-14-11-35	ECLASS 9.1	27-14-11-35
ECLASS 10.0	27-14-11-35	ECLASS 11.0	27-14-11-35
ECLASS 12.0	27-14-11-35	ECLASS 13.0	27-25-03-02
ECLASS 14.0	27-25-03-02		

Environmental Product Compliance

RoHS Compliance Status	Compliant without exemption
REACH SVHC	No SVHC above 0.1 wt%

Approvals

ROHS	Conform
------	---------

Fiche de données**EW 35 GR 7032****Weidmüller Interface GmbH & Co. KG**
Klingenbergstraße 26
D-32758 Detmold
Germanywww.weidmueller.com**Caractéristiques techniques****Downloads**

Approval/Certificate/Document of Conformity	Confirmation of Standards EN 45545-2_2020-10
Engineering Data	CAD data – STEP
User Documentation	StorageConditionsTerminalBlocks
Catalogues	Catalogues in PDF-format
Brochures	