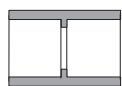


RACCORDS POUR CONDUIT

Dimension (po)	N° de pièce	Code informatique	A po	B po	C po
----------------	-------------	-------------------	------	------	------

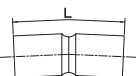
Manchons



1/2	EC10	077001	1,080	0,840	1,437
3/4	EC15	077002	1,300	1,050	1,703
1	EC20	077003	1,590	1,315	2,031
1-1/4	EC25	077004	2,000	1,660	2,156
1-1/2	EC30	077005	2,230	1,900	2,281
2	EC35	077006	2,720	2,375	2,406
2-1/2	EC40	077007	3,320	2,875	3,187
3	EC45	077008	4,000	3,500	3,437
3-1/2	EC50	077009	4,500	4,000	3,625
4	EC55	077010	5,000	4,500	3,750
5	EC60	077011	6,120	5,563	4,187
6	EC65	077012	7,370	6,625	4,562

Dimension (po)	N° de pièce	Code informatique	L po
----------------	-------------	-------------------	------

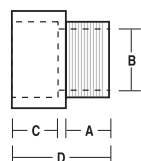
Manchon 5°



2	5EC35	077100	4,0
2-1/2	5EC40	077101	5,5
3	5EC45	077103	6,0
3-1/2	5EC50	077102	7,0
4	5EC55	077104	7,0
5	5EC60	077105	7,5
6	5EC65	077106	11,0

Dimension (po)	N° de pièce	Code informatique	A po	B po	C po	D po
----------------	-------------	-------------------	------	------	------	------

Adaptateur 1/2 po à 1-1/4 po, filetage conique; 1-1/2 po à 6 po, filetage non-conique



1/2	TA10	077021	0,700	0,591	0,750	1,550
3/4	TA15	077022	0,675	0,790	1,000	1,750
1	TA20	077023	0,625	1,000	1,115	1,860
1-1/4	TA25	077024	0,640	1,311	1,300	2,125
1-1/2	TA30	077025	0,725	1,530	1,425	2,250
2	TA35	077026	0,800	1,970	1,150	2,100
2-1/2	TA40	077027	0,800	2,346	1,900	2,930
3	TA45	077028	0,815	2,915	2,000	3,055
3-1/2	TA50	077029	1,000	3,385	1,715	3,055
4	TA55	077030	0,815	3,850	1,990	3,215
5	TA60	077031	1,105	4,810	2,000	5,985
6	TA65	077032	1,105	5,825	2,130	6,500