

ACT20M-BAI-AO-S**Weidmüller Interface GmbH & Co. KG**

Klingenbergstraße 26

D-32758 Detmold

Germany

www.weidmueller.com

Product image, Similar to illustration**ACT20M: The slim solution**

- Safe and space-saving (6 mm) isolation and conversion
- Quick installation of the power supply unit using the CH20M mounting rail bus
- Easy configuration via DIP switch or FDT/DTM software
- Extensive approvals such as ATEX, IECEX, GL, DNV
- High interference resistance

General ordering data

Version	Signal converter/insulator, Configurable, Input : I / U/bidirectional I, Output : I / U
Order No.	1375450000
Type	ACT20M-BAI-AO-S
GTIN (EAN)	4050118236736
Qty.	1 pièce(s)

ACT20M-BAI-AO-S

Weidmüller Interface GmbH & Co. KG

Klingenbergstraße 26

D-32758 Detmold

Germany

www.weidmueller.com

Caractéristiques techniques

Dimensions and weights

Depth	114,3 mm	Depth (inches)	4,5 inch
Height	112,5 mm	Height (inches)	4,429 inch
Width	6,1 mm	Width (inches)	0,24 inch
Net weight	80 g		

Temperatures

Storage temperature	-40 °C...85 °C	Operating temperature	-25 °C...70 °C
Humidity at operating temperature	0...95 % (no condensation)	Humidity	40 °C / 93 % rel. humidity, no condensation

Probability of failure

SIL in compliance with IEC 61508	None	MTBF	181 a
----------------------------------	------	------	-------

Input

Input current	configurable, -10 mA...0...+10 mA, -20 mA...0...+20 mA	Input resistance, voltage	≥ 1 MΩ
Input voltage	configurable, -5 V...0...+5 V, -10 V...0...+10 V	Number of inputs	1
Sensor	Voltage source, Current source	Voltage drop, current input	1 V at 20 mA

Output

Cut-off frequency (-3 dB)	≥ 100 Hz, 10 Hz	Load impedance current	≤ 600 Ω
Number of outputs	1	Output current	configurable, 0...20 mA, 4...20 mA
Output voltage, note	configurable, 0(2)...10 V, 0(1)...5 V	Type	active, connected control must be passive
load impedance voltage	≥ 10 kΩ		

General data

Accuracy	<0.05 % of measuring range		
Configuration	DIP switch		
Delivery state	Bandwidth: 100 Hz // Input: -10...10 V // Output: 0...20 mA		
Delivery state	Setting parameters	Bandwidth	
	Configuration	100 Hz	
	Setting parameters	Input	
	Configuration	-10...10 V	
	Setting parameters	Output	
	Configuration	0...20 mA	
Galvanic isolation	4-way isolator;		
Power consumption, max.	0,8 W		
Power consumption, typ.	0,45 W		
Protection degree	IP20		
Rail	TS 35		
Step response time	≤ 7 ms		
Temperature coefficient	<0.01% of span/°C (TU)		
Voltage supply	24 V DC ±30 % at terminal or via CH20M rail bus		

ACT20M-BAI-AO-S

Weidmüller Interface GmbH & Co. KG

Klingenbergstraße 26

D-32758 Detmold

Germany

www.weidmueller.com

Caractéristiques techniques

Insulation coordination

EMC standards	EN 61326-1	Galvanic isolation	4-way isolator;
Insulation voltage	2.5 kV _{eff} / 1 min.	Pollution severity	2
Rated voltage	300 V _{eff}	Surge voltage category	II

Data for Ex applications (ATEX)

Installation location	Device installed in safe area, zone 2	Marking	II 3 G Ex nA IIC T4 Gc
-----------------------	---------------------------------------	---------	------------------------

Connection data

Type of connection	Screw connection	Tightening torque, min.	0,4 Nm
Tightening torque, max.	0,6 Nm	Clamping range, rated connection	2,5 mm ²
Clamping range, min.	0,5 mm ²	Clamping range, max.	2,5 mm ²
Wire connection cross section AWG, min.	AWG 30	Wire connection cross section AWG, max.	AWG 14

EMC conformity and approvals

EMC standards	EN 61326-1	Standards	IEC 61010-1
---------------	------------	-----------	-------------

Classifications

ETIM 6.0	EC002653	ETIM 7.0	EC002653
ETIM 8.0	EC002653	ETIM 9.0	EC002653
ECLASS 9.0	27-21-01-20	ECLASS 9.1	27-21-01-20
ECLASS 10.0	27-21-01-20	ECLASS 11.0	27-21-01-20
ECLASS 12.0	27-21-01-20	ECLASS 13.0	27-21-01-20
ECLASS 14.0	27-21-01-20		

Tender specification sheets

Short specification	Bipolar standard signal converter 1-channel signal converter, 6.1 mm wide, with external voltage supply, for transmission and isolation of analogue DC current signals +/- 10 mA or +/- 20 mA and voltage signals +/- 5 V or +/- 10 V. Input and output signals can be configured with DIP switches.
---------------------	--

Environmental Product Compliance

RoHS Compliance Status	Compliant with exemption
RoHS Exemption (if applicable/known)	7a, 7cl
REACH SVHC	Lead 7439-92-1
SCIP	2f6dd957-421a-46db-a0c2-cf1609156924

ACT20M-BAI-AO-S**Weidmüller Interface GmbH & Co. KG**

Klingenbergstraße 26

D-32758 Detmold

Germany

www.weidmueller.com

Caractéristiques techniques**Important note**

Product information

The configurable DC-Converter ACT20M-BAI-AO-S separates and converts standard analogue signals. An analogue input signal is converted linear and galvanic isolated into an analogue output signal. The power supply is galvanically isolated from input and output and happens via a direct wiring or the Weidmüller DIN Rail Bus (3-way isolation).

Approvals

Approvals



ROHS	Conform
UL File Number Search	UL Website
Certificate no. (cULus)	E337701

Downloads

Approval/Certificate/Document of Conformity	DNV-GL certificate FM certificate IECEX certificate ATEX certificate UL certification for canada Declaration of Conformity
Engineering Data	CAD data – STEP
Software	DIP switch configuration tool
User Documentation	Instruction sheet
Catalogues	Catalogues in PDF-format
Brochures	

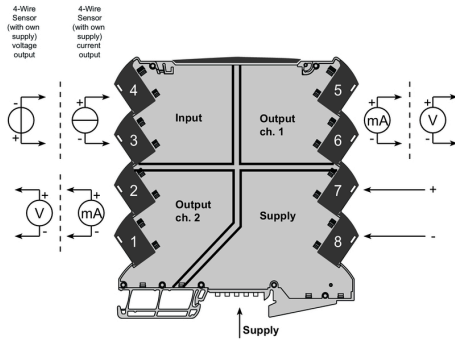
ACT20M-BAI-AO-S

Weidmüller Interface GmbH & Co. KG
 Klingenbergstraße 26
 D-32758 Detmold
 Germany

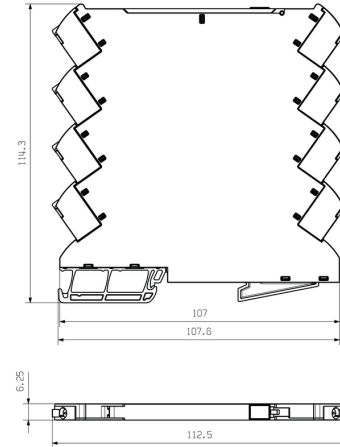
www.weidmueller.com

Dessins

Connection diagram



Dimensional drawing



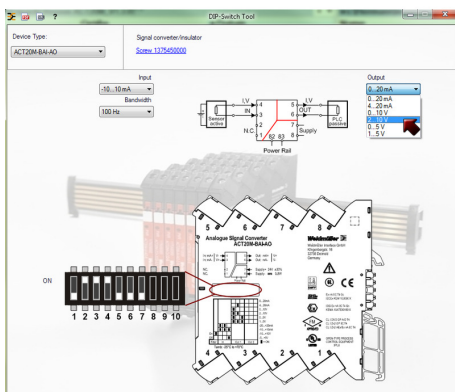
Additional power supply option via bus

DIP switch setting

Input Setup					
Bandwidth	1	Input range	2	3	4
10 Hz	<input checked="" type="checkbox"/>	-10...+10 mA	<input checked="" type="checkbox"/>	<input checked="" type="checkbox"/>	<input checked="" type="checkbox"/>
100 Hz		-20...+20 mA	<input checked="" type="checkbox"/>	<input checked="" type="checkbox"/>	
		-5...+5 V			<input checked="" type="checkbox"/>
		-10...+10 V			

= ON

Output setup				
Output range	5	6	7	
0...20 mA				
4...20 mA		<input checked="" type="checkbox"/>		
0...10 V	<input checked="" type="checkbox"/>			
2...10 V	<input checked="" type="checkbox"/>	<input checked="" type="checkbox"/>		
0...5 V	<input checked="" type="checkbox"/>			<input checked="" type="checkbox"/>
1...5 V	<input checked="" type="checkbox"/>	<input checked="" type="checkbox"/>		<input checked="" type="checkbox"/>



example for DIP switch setting (with ACT20M-Tool software)