

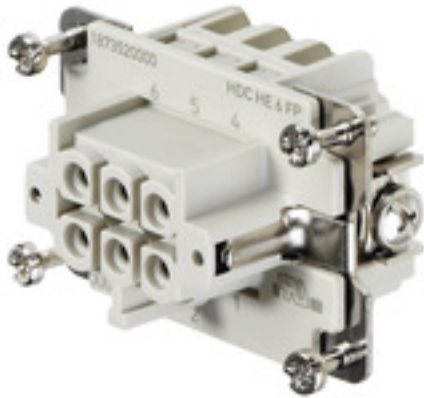
HDC HE 6 FP**Weidmüller Interface GmbH & Co. KG**

Klingenbergstraße 26

D-32758 Detmold

Germany

www.weidmueller.com



The PUSH IN connection is a direct-insert method of connection. The preprocessed wire can be inserted directly into the wire connection without the need for any tools.

Number of poles: **6**

Rated current: **24 A**

Rated voltage: **500 V**

Nominal voltage acc. to UL/CSA: **600 V AC/DC**

PUSH IN technology

General ordering data

Version	HDC insert, Female, 500 V, 24 A, Number of poles: 6, PUSH IN, Size: 3
Order No.	1873520000
Type	HDC HE 6 FP
GTIN (EAN)	4032248457779
Qty.	1 pièce(s)

HDC HE 6 FP

Weidmüller Interface GmbH & Co. KG

Klingenbergstraße 26

D-32758 Detmold

Germany

www.weidmueller.com

Caractéristiques techniques

Dimensions and weights

Depth	51 mm	Depth (inches)	2,008 inch
Height	33,8 mm	Height (inches)	1,331 inch
Width	34 mm	Width (inches)	1,339 inch
Net weight	38,72 g		

Temperatures

Limit temperature	-40 °C ... 125 °C
-------------------	-------------------

Dimensions

Height of socket	33,8 mm	Total length base	51 mm
Width	34 mm		

General data

BG	3		
Colour	beige		
Free from halogens	true		
Insulating material	PC glass-fibre reinforced (UL-listed and railway-certified)		
Insulating material group	IIIa		
Insulation strength	10 ¹⁰ Ω		
Low smoke acc. DIN EN 45545-2	Yes		
Material	Copper alloy		
Number of poles	6		
Plugging cycles, silver	≥ 500		
Pollution severity	3		
Rated current (DIN EN 61984)	24 A		
Rated current (UR)	Wire connection cross section AWG	AWG 12	
	Rated current	20 A	
	Wire connection cross section AWG	AWG 14	
	Rated current	15 A	
	Wire connection cross section AWG	AWG 16	
	Rated current	10 A	
	Wire connection cross section AWG	AWG 18	
	Rated current	7 A	
	Wire connection cross section AWG	AWG 20	
Rated current (cUR)	Rated current	5 A	
	Wire connection cross section AWG	AWG 12	
	Rated current	19 A	
	Wire connection cross section AWG	AWG 14	
	Rated current	16 A	
	Wire connection cross section AWG	AWG 16	
	Rated current	12,5 A	
	Wire connection cross section AWG	AWG 18	
	Rated current	9,8 A	
Wire connection cross section AWG	AWG 20		
Rated current	8 A		
Rated impulse voltage (DIN EN 61984)	6 kV		
Rated voltage (DIN EN 61984)	500 V		
Rated voltage according to UL/CSA	600 V AC/DC		
Series	HE		
Size	3		
Surface finish	Silver passivated		

Date de création 26 novembre 2024 13:53:44 CET

Niveau du catalogue 26.11.2024 / Toutes modifications techniques réservées

2

HDC HE 6 FP

Weidmüller Interface GmbH & Co. KG

Klingenbergstraße 26

D-32758 Detmold

Germany

www.weidmueller.com

Caractéristiques techniques

Type	Female
Type of connection	PUSH IN
UL 94 flammability rating	V-0
Volume resistance	≤2 mΩ

Connection data PE

Blade size, slotted (PE connection)	SD 0.8 x 4.0	Connection type PE	Screw connection
Fixing screw	M 4	Rated cross-section	4 mm ²
Stripping length PE connection	10 mm	Tightening torque, max. PE connection	1,5 Nm
Tightening torque, min. PE connection	1,2 Nm	Wire cross section, AWG (PE), max.	AWG 12
Wire cross section, AWG (PE), min.	AWG 20		

Version

BG	3	Blade size, slotted (screw connection)	SD 0.5 x 3.0
Conductor cross-section, max.	2,5 mm ²	Conductor cross-section, min.	0,5 mm ²
Material	Copper alloy	Size	3
Stripping length, rated connection	10 mm	Surface finish	Silver passivated
Type of connection	PUSH IN	Volume resistance	≤2 mΩ
Wire connection cross section, finely stranded, max.	2,5 mm ²	Wire connection cross section, finely stranded, min.	0,5 mm ²
Wire connection cross-section, finely stranded with wire-end ferrules DIN 46228/1, max.	2,5 mm ²	Wire connection cross-section, finely stranded with wire-end ferrules DIN 46228/1, min.	0,5 mm ²
Wire connection cross-section, finely stranded with wire-end ferrules DIN 46228/4, max.	1,5 mm ²	Wire cross-section, solid, max.	2,5 mm ²
Wire cross-section, solid, min.	0,5 mm ²		

Classifications

ETIM 6.0	EC000438	ETIM 7.0	EC000438
ETIM 8.0	EC000438	ETIM 9.0	EC000438
ECLASS 9.0	27-44-02-05	ECLASS 9.1	27-44-02-05
ECLASS 10.0	27-44-02-05	ECLASS 11.0	27-44-02-05
ECLASS 12.0	27-44-02-05	ECLASS 13.0	27-44-02-05
ECLASS 14.0	27-44-02-05		

Substance	Acetone
Chemical resistance	Resistant
Substance	Ammonia, watery
Chemical resistance	Conditionally resistant
Substance	Petrol
Chemical resistance	Resistant
Substance	Benzene
Chemical resistance	Resistant
Substance	Diesel oil
Chemical resistance	Conditionally resistant
Substance	Acetic acid, concentrated
Chemical resistance	Resistant
Substance	Potassium hydroxide

Date de création 26 novembre 2024 13:53:44 CET

Niveau du catalogue 26.11.2024 / Toutes modifications techniques réservées

3

HDC HE 6 FP

Weidmüller Interface GmbH & Co. KG
 Klingenbergstraße 26
 D-32758 Detmold
 Germany

www.weidmueller.com

Caractéristiques techniques

Chemical resistance	Conditionally resistant
Substance	Methanol
Chemical resistance	Conditionally resistant
Substance	Motor oil
Chemical resistance	Conditionally resistant
Substance	Lye, diluted
Chemical resistance	Resistant
Substance	Hydrochlorofluorocarbons
Chemical resistance	Conditionally resistant
Substance	Outdoor use
Chemical resistance	Conditionally resistant

Environmental Product Compliance

RoHS Compliance Status	Compliant with exemption
RoHS Exemption (if applicable/known)	6c
REACH SVHC	Lead 7439-92-1 Potassium perfluorobutane sulfonate 29420-49-3
SCIP	b67daa31-7dca-434d-8290-da7fb52f83a2
Chemical resistance	de.myview.objectmodel.impl.BlockImpl@25cae5d5 de.myview.objectmodel.impl.BlockImpl@373ce66 de.myview.objectmodel.impl.BlockImpl@2b504a72 de.myview.objectmodel.impl.BlockImpl@65c6c4de de.myview.objectmodel.impl.BlockImpl@17d061fe de.myview.objectmodel.impl.BlockImpl@a4d8d9c de.myview.objectmodel.impl.BlockImpl@2367557d de.myview.objectmodel.impl.BlockImpl@70d485fb de.myview.objectmodel.impl.BlockImpl@641fc58e de.myview.objectmodel.impl.BlockImpl@25885fc de.myview.objectmodel.impl.BlockImpl@1b8df477 de.myview.objectmodel.impl.BlockImpl@4fa251a0

Approvals

Approvals



ROHS	Conform
UL File Number Search	UL Website
Certificate No. (cURus)	E310075

Downloads

Engineering Data	CAD data – STEP
Technical Documentation	1873520000 HDC HE 06 FP STP Blatt_1.pdf
Catalogues	Catalogues in PDF-format
Brochures	FL FIELDWIRING EN FL FIELDWIRING EN

Fiche de données

HDC HE 6 FP

Weidmüller Interface GmbH & Co. KG
Klingenbergstraße 26
D-32758 Detmold
Germany

www.weidmueller.com

Dessins

