

ACT20P-CMT-60-RC-S**Weidmüller Interface GmbH & Co. KG**

Klingenbergstraße 26

D-32758 Detmold

Germany

www.weidmueller.com

Similar to illustration**ACT20P: The flexible solution**

- Precise and highly functional signal converters
- Release levers simplify handling

General ordering data

Version	Current-measuring transducer, Limit value monitoring, Input : 0...40/50/60 A, Relay output, Current-carrying cable in feed-through hole
Order No.	1510390000
Type	ACT20P-CMT-60-RC-S
GTIN (EAN)	4050118325485
Qty.	1 pièce(s)

ACT20P-CMT-60-RC-S

Weidmüller Interface GmbH & Co. KG

Klingenbergstraße 26

D-32758 Detmold

Germany

www.weidmueller.com

Caractéristiques techniques

Dimensions and weights

Depth	113,6 mm	Depth (inches)	4,472 inch
Height	119,2 mm	Height (inches)	4,693 inch
Width	22,5 mm	Width (inches)	0,886 inch
Net weight	158 g		

Temperatures

Storage temperature	-40 °C...85 °C	Operating temperature	-25 °C...60 °C
Humidity	5...95 %, no condensation		

Probability of failure

MTTF	100 a
------	-------

Input

Input frequency		Input measurement range	configurable, 0... 40/50/60 A AC (RMS) or DC, max. peak current $10 \times I_{\text{Input}}$ (1 s), For DC current measurement (AA): Cur- rent direction display at the output (-/+ analog value)
	AC: 15...700 Hz (true root mean square)		
Input signal	Current-carrying cable in feed-through hole	Number of inputs	1
Overload behaviour	Max. peak current: $10 \times I_{\text{Input}}$ for 1s		

Output (digital)

Alarm function	Surge current, Under-cur- rent, Alarm delay: 0... 10 s, Hysteresis 5% / 10%	Continuous current	$2 \times I_{\text{Input}}$
Max. switching voltage, AC	250 V	Max. switching voltage, DC	24 V
Number of digital outputs	1	Rated switching current	6 A
Switching thresholds	2...105% of measurement range	Type	Relay, 1 CO contact, nor- mal / inverse adjustment

General data

Accuracy	<0.75 % FSR, <1.5 % FSR with measurement range 50/60 A AC	Configuration	DIP switch and potentio- meter
Galvanic isolation	3-way isolator, between in- put/output/supply	Power consumption, max.	2,2 W
Protection degree	IP20	Rail	TS 35
Step response time	≤ 300 ms (RMS), ≤ 60 ms (AA)	Temperature coefficient	0.01%/K @ 0...40 A, 0.10%/K @ 40...55 A, 0.30%/K @ 55...60 A
Voltage supply	16,8 V...31,2 V		

ACT20P-CMT-60-RC-S

Weidmüller Interface GmbH & Co. KG

Klingenbergstraße 26

D-32758 Detmold

Germany

www.weidmueller.com

Caractéristiques techniques

Insulation coordination

EMC standards	EN 61326-1	Galvanic isolation	3-way isolator, between input/output/supply
Impulse withstand voltage	6.4 kV (1.2/50 µs)	Insulation voltage	4 kV _{eff} / 1 min.
Pollution severity	2	Rated voltage	300 V AC _{eff}
Surge voltage category	III	Test voltage	4 kV

Connection data

Type of connection	Screw connection	Tightening torque, min.	0,4 Nm
Tightening torque, max.	0,6 Nm	Clamping range, rated connection	1,5 mm ²
Clamping range, min.	0,5 mm ²	Clamping range, max.	2,5 mm ²
Wire connection cross section AWG, min.	AWG 26	Wire connection cross section AWG, max.	AWG 12

Classifications

ETIM 6.0	EC002475	ETIM 7.0	EC002475
ETIM 8.0	EC002475	ETIM 9.0	EC002475
ECLASS 9.0	27-21-01-23	ECLASS 9.1	27-21-01-23
ECLASS 10.0	27-21-01-23	ECLASS 11.0	27-21-01-23
ECLASS 12.0	27-21-01-23	ECLASS 13.0	27-21-01-23
ECLASS 14.0	27-21-01-23		

Environmental Product Compliance

RoHS Compliance Status	Compliant with exemption
RoHS Exemption (if applicable/known)	6c, 7a, 7cl
REACH SVHC	Lead 7439-92-1
SCIP	2f6dd957-421a-46db-a0c2-cf1609156924

Important note

Product information

The ACT20P-CMT-XX-(AO)-RC-S series of devices measure and monitor AC and DC currents of up to 60 A. The real effective value method used allows for precise measurement, even for distorted current curve shapes. The devices feature integrated limit value monitoring with an adjustable switching threshold, delay and hysteresis, as well as a relay output..

Features

- Real effective value measurement (True RMS) or arithmetic averaging (AA) measurement and contactless through-hole technology
- Limit value monitoring for overcurrent or undercurrent
- Relay output by means of the open-circuit / closed-circuit principle
- Adjustable trigger delay for filtering current peaks
- Operational status and error display on a front panel LED and output signalling according to NE43, NE44, NE107
- Galvanic four-way insulation for secure isolation according to IEC/EN 61010-2-201

Approvals

Approvals



ROHS	Conform
UL File Number Search	UL Website
Certificate no. (cULus)	E141197

Date de création 26 novembre 2024 13:56:44 CET

Niveau du catalogue 26.11.2024 / Toutes modifications techniques réservées

3

ACT20P-CMT-60-RC-S

Weidmüller Interface GmbH & Co. KG
Klingenbergstraße 26
D-32758 Detmold
Germany

www.weidmueller.com

Caractéristiques techniques

Downloads

Approval/Certificate/Document of Conformity	Certification DNV GL Declaration of Conformity
Engineering Data	CAD data – STEP
Software	DIP switch configuration tool
User Documentation	Instruction sheet
Catalogues	Catalogues in PDF-format
Brochures	

Fiche de données

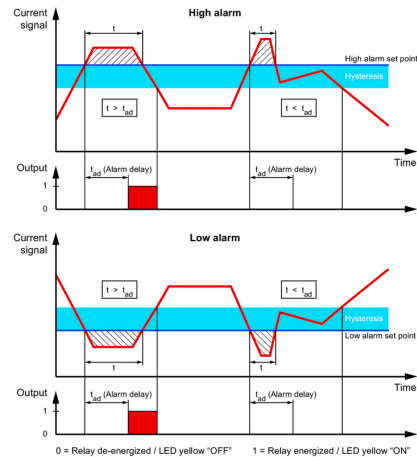
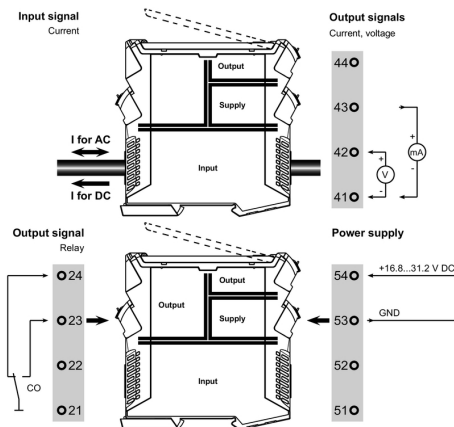
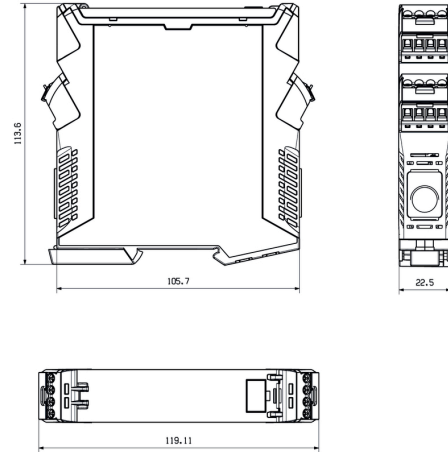
ACT20P-CMT-60-RC-S

Weidmüller Interface GmbH & Co. KG
 Klingenbergstraße 26
 D-32758 Detmold
 Germany

www.weidmueller.com

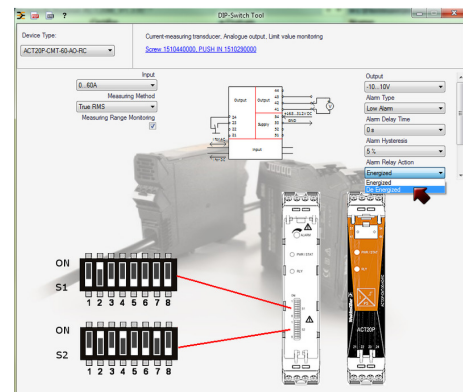
Dessins

Dimensioned drawing



Configuration

DIP switch S1		DIP switch S2	
Current input range	1 2 3 4 5 6 7 8	Alarm relay action	1 2 3 4 5 6 7 8
0...40 A	<input type="checkbox"/>	Energized	<input type="checkbox"/>
0...50 A	<input checked="" type="checkbox"/>	De-energized	<input type="checkbox"/>
0...60 A	<input type="checkbox"/>		
Measuring method	1 2 3 4 5 6 7 8	Alarm hysteresis	1 2 3 4 5 6 7 8
True RMS	<input type="checkbox"/>	5 %	<input type="checkbox"/>
Arithmetic average	<input checked="" type="checkbox"/>	10 %	<input type="checkbox"/>
Alarm delay time	1 2 3 4 5 6 7 8	Alarm type	1 2 3 4 5 6 7 8
0 s	<input type="checkbox"/>	High alarm	<input type="checkbox"/>
2 s	<input type="checkbox"/>	Low alarm	<input checked="" type="checkbox"/>
5 s	<input type="checkbox"/>		
10 s	<input type="checkbox"/>		



example for DIP switch setting (with ACT20 tool)