

CUTTING



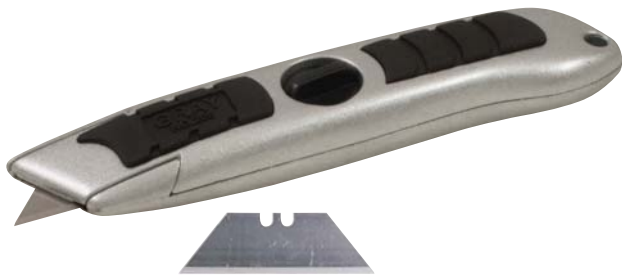
Hacksaw

Part No.	Description
2682HD	<p>Premium industrial strength hacksaw</p> <ul style="list-style-type: none"> • Cuts ferrous and non ferrous metals and other materials. • Unique 2 step quick blade change action. • 12" blade is adjustable to 45° and 90°. • Blade tension lever integrated into handle for quick change of blades. • Supplied complete with top quality bi-metal HSS 24 tpi blade. • Flexible high speed teeth welded to top quality alloy steel backing. • 1/2" wide lacquered blade provides superior cutting efficiency with maximum safety. • Comfortable fully insulated molded handle. • Spare blade storage area located in black frame.



6" Blade Mini Hacksaw

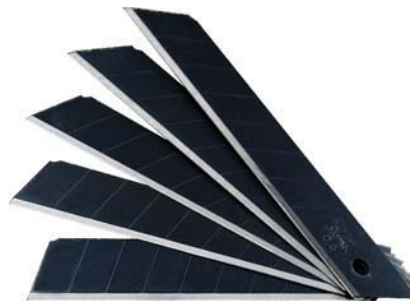
Part No.	Description
2612HS	<p>Professional grade industrial mini hacksaw.</p> <ul style="list-style-type: none"> • Six blade angle settings. • Sturdy oval aluminum frame for greater cutting depth. • Cushioned comfort grip handle. <p>Replacement blade: 2612HS-BLD</p>



206-KBL

Screw-Lock Utility Knife

Part No.	Description	Replacement Blades
206	<p>Heavy Duty Utility Knife</p> <ul style="list-style-type: none"> • Handle stores extra blades. • Easy to remove and install blades. • Comfort grip handle. • Includes 3 blades. 	206-KBL (Pkg. 5)



Utility Knife Blades

Part No.	Description	Quantity of blades per pack
GB-10BH	G-Blades: 18mm x 0.6mm	10
HB-10BH	H-Blades: 25mm x 0.7mm	10
LB-10BH	L-Blades: 18mm x 0.5mm	10
SB-10BH	S-Blades: 8mm x 0.38 mm	10

- High-tempered steel for a harder blade that holds its edge longer.
- Double-honed to stay sharper.
- Compatible with all brands of knives.
- G-blades are 20% thicker than L- blades, for heavy-duty use.