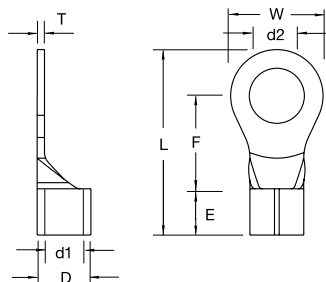




### Non-Insulated Ring Terminals



- Chamfered Barrel
- Brazed Seam
- Internal Barrel Serrations



Catalog Number	Wire Range	Bolt Size (d2)	Dimension <sup>inch</sup> / <sub>mm</sub>							
			W	F	L	E	D	d1	T	
K18-6R-M	22-16 A.W.G. 0.5-1.5 mm <sup>2</sup>	#6	.146 3.7	.260 6.6	.248 6.3	.567 14.4	.189 4.8	.134 3.4	.067 1.7	.030 0.75
K18-8R-M		#8	.169 4.3	.260 6.6	.248 6.3	.567 14.4				
K18-10R-M		#10	.209 5.3	.315 8.0	.276 7.0	.622 15.8				
K18-14R-M		1/4	.252 6.4	.457 11.6	.433 11.0	.858 21.8				
K18-516R-M		5/16	.331 8.4	.457 11.6	.433 11.0	.858 21.8				
K14-6R-M	16-14 A.W.G. 1.5-2.5 mm <sup>2</sup>	#6	.146 3.7	.260 6.6	.248 6.3	.567 14.4	.189 4.8	.161 4.1	.091 2.3	.031 0.8
K14-8R-M		#8	.169 4.3	.260 6.6	.248 6.3	.567 14.4				
K14-10R-M		#10	.209 5.3	.335 8.5	.307 7.8	.661 16.8				
K14-14R-M		1/4	.252 6.4	.472 12.0	.433 11.0	.858 21.8				
K14-516R-M		5/16	.331 8.4	.472 12.0	.433 11.0	.858 21.8				
K14-38R-M		3/8	.413 10.5	.535 13.6	.547 13.9	1.004 25.5				
K10-6R-M	12-10 A.W.G. 4-6 mm <sup>2</sup>	#6	.146 3.7	.283 7.2	.240 6.1	.618 15.7	.236 6.0	.220 5.6	.134 3.4	.039 1.0
K10-8R-M		#8	.169 4.3	.283 7.2	.240 6.1	.618 15.7				
K10-10R-M		#10	.209 5.3	.374 9.5	.358 9.1	.772 19.6				
K10-14R-M		1/4	.252 6.4	.472 12.0	.413 10.5	.886 22.5				
K10-516R-M		5/16	.331 8.4	.591 15.0	.531 13.5	1.063 27.0				
K10-38R-M		3/8	.413 10.5	.591 15.0	.531 13.5	1.063 27.0				
K10-12R-D		1/2	.512 13.0	.756 19.2	.630 16.0	1.244 31.6				

Box Quantity: (D)=500; (M)=1000

For Mylar Tape replace box quantity with (T). Example: K18-6R-T

UL File #E9809

CSA File #LR4503

See pages in back of catalog for complete tool information.

Tool and Die Selection Chart on page M42.

Terminal Material: Copper

### Tools used with Non-Insulated Ring Terminals



ERG2002



KT-2500