

Series PDBFS Enclosed Power Distribution Blocks

Feature/Benefits

- Enclosed for enhanced safety; IP-20 finger-safe under specific conditions, see page 8
- High Short-Circuit Current Ratings up to 200,000A: PDBs do not have to be a weak link in achieving a high SCCR for an industrial control panel
- Suitable for installation in wireways and industrial control panel feeder and branch circuits. Listed to UL1953 which has minimum spacing requirements at 600V of at least 1" through air and 2" over surface
- Small footprint saves panel space. Stack side by side and still meet 1" and 2" spacing requirements
- For 2D and 3D CAD drawings visit www.cooperbussmann.com



Electrical

- 600Vac or dc (UL 1953), 690Vac or dc (IEC)
- Short-Circuit Current Ratings up to 200kA, see table below
- Ampacities up to 760 Amps
- 75°C rated connectors
- CU Wire range 14 AWG to 500 kcmil or 2.5 to 240 mm²

Mechanical

- DIN rail or panel mount; PDBFS330 & PDBFS504 panel mount only
- Captive termination screws; screws do not get misplaced
- Wire ready: captive termination screws shipped backed out to save time on conductor installation
- Sliding DIN rail latch for easy mounting
- Single pole, gang mountable for multiple pole applications with interlocking dovetail accessory (optional Part 2A1279) One pin interlocks two units, two pins to interlock three units (see illustration on page 6)
- Flammability, UL 94V0
- Tin-plated AL connectors suitable for CU conductors
- Elongated hole for panel mounting; easier mounting with greater flexibility in matching up with drilled panel holes
- DIN rail end anchors required to prevent damage to block when torquing, anchors not offered by Cooper Bussmann

Agency/Standards

- UL Listed 1953, Guide QPQS, File E256146
- CSA Certified, Class 6228-01, File 15364
- CE component IEC 60947-7-1
- IEC 60529, IP-20 (Finger Safe) under specific conditions, see page 8

Series PDBFS

| Electrical | | Terminal Copper Conductor Capability | | | Short-Circuit Current Rating Data | | | | | | | |
|-------------------|------|--|--|-------------------|-----------------------------------|--------------|------------------------|-----|---------|---------------|-------------|-------|
| | | Line | Load | Configuration | Conductors | | Max Fuse Class & Amp** | | | | SCCR | |
| Catalog Number | Amps | Wire Range | Wire Range | Openings per Pole | | Line | Load | J | T | RK1 | | RK5 |
| (All Single Pole) | | | | Line | Load | AWG or kcmil | AWG or kcmil | LPJ | JJS JJN | LPS-RK LPN-RK | FRS-R FRN-R | |
| PDBFS204 | 175A | 2/0 to 8 AWG 70 to 10 mm ² | 2/0 to 8 AWG 70 to 10 mm ² | ○ | ○ | 2/0 to 8 | 2/0 to 8 | 200 | 200 | 100 | 60 | 200kA |
| PDBFS220 | 175A | 2/0 to 8 AWG 70 to 10 mm ² | 4 to 14 AWG 25 to 2.5 mm ² | ○ | ○○ | 2/0 to 8 | 4 to 12 | 200 | 200 | 100 | 60 | 200kA |
| | | | | | | | 4 to 14 | 175 | 175 | 100 | 30 | 100kA |
| | | | | | | | | 200 | 200 | 100 | 60 | 50kA |
| PDBFS303 | 310A | 350kcmil to 6 AWG 150 to 16 mm ² | 350kcmil to 6 AWG 150 to 16 mm ² | ○ | ○ | 350 to 6 | 350 to 6 | 400 | 400 | 200 | 100 | 200kA |
| PDBFS330 | 380A | 500kcmil to 6 AWG 240 to 16 mm ² | 2 to 14 AWG 35 to 2.5 mm ² | ○ | ○○○ | 500 to 6 | 2 to 6 | 400 | 400 | 200 | 100 | 200kA |
| | | | | | | | 2 to 14 | 200 | 200 | 100 | 60 | 50kA |
| | | | | | | | | 175 | 175 | 100 | 30 | 100kA |
| PDBFS377 | 570A | 300kcmil to 4 AWG 150 to 12 mm ² | 4 to 14 AWG 25 to 2.5 mm ² | ○○ | ○○○○ | 300 | 4 to 8 | 600 | 600 | 400 | 200 | 200kA |
| | | | | | | 300 to 4 | 4 | 400 | 400 | 200 | 100 | 100kA |
| | | | | | | | | 200 | 200 | 100 | 60 | 50kA |
| PDBFS500 | 620A | 350kcmil to 4 AWG 185 to 12 mm ² | 350kcmil to 4 AWG 185 to 12 mm ² | ○○ | ○○ | 350 to 4 | 350 to 4 | 600 | 600 | 400 | 200 | 200kA |
| PDBFS504 | 760A | 500kcmil to 6 AWG 240 to 16 mm ² | 500kcmil to 6 AWG 240 to 16 mm ² | ○○ | ○○ | 500 | 500 | 600 | 800* | 600 | 200 | 200kA |
| | | | | | | 500 to 6 | 500 to 6 | 600 | 600 | 400 | 200 | 100kA |

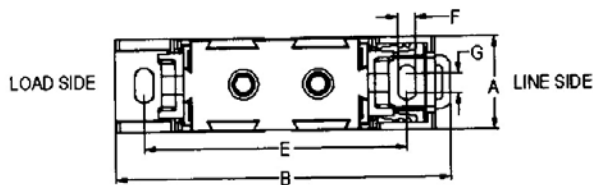
Ampacities 75C per NEC® Table 310.16 and UL508A Table 28.1

*Class L 800A (KRP-C 800_SP) or less fuses suitable for this particular SCCR case.

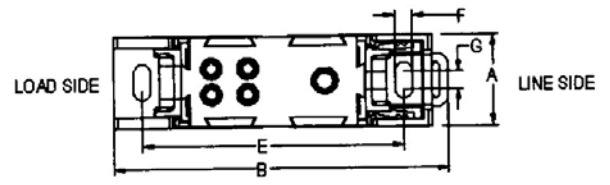
** Class G 60A (SC-60) or less or Class CC 30A (LP-CC-30, FNQ-R-30, KTK-R-30) or less are suitable for all SCCRs in this table.

Series PDBFS Enclosed Power Distribution Blocks

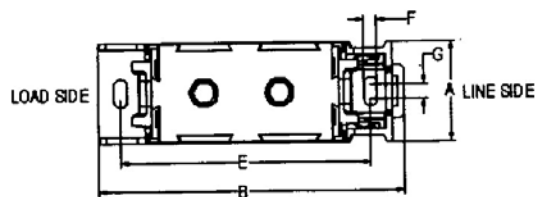
| Dimensions in[mm] | | | | | | | | |
|-------------------|--------------|---------------|--------------|---------------|--------------|-------------|-------------|--------------|
| Part No. | Width | Length | Height | D | E | F | G | H |
| | A | B | C | | | | | |
| PDBFS204 | 1.030[26.16] | 3.372[94.80] | 2.146[54.50] | 3.550[90.17] | 2.905[73.79] | 0.197[5.00] | 0.197[5.00] | N/A |
| PDBFS220 | 1.030[26.16] | 3.372[94.80] | 2.146[54.50] | 3.550[90.17] | 2.905[73.79] | 0.197[5.00] | 0.197[5.00] | N/A |
| PDBFS303 | 1.550[39.37] | 4.665[118.50] | 2.874[73.00] | 4.475[113.67] | 3.810[96.77] | 0.197[5.00] | 0.236[6.00] | N/A |
| PDBFS330 | 1.550[39.37] | 4.665[118.50] | 2.950[74.93] | 4.475[113.67] | 3.810[96.77] | 0.197[5.00] | 0.236[6.00] | N/A |
| PDBFS377 | 1.875[47.62] | 4.665[118.50] | 2.933[74.50] | 4.475[113.67] | 3.810[96.77] | 0.197[5.00] | 0.236[6.00] | N/A |
| PDBFS520 | 2.380[60.45] | 4.665[118.50] | 2.598[66.00] | 4.475[113.67] | 3.810[96.77] | 0.197[5.00] | 0.236[6.00] | N/A |
| PDBFS504 | 2.560[65.02] | 4.665[118.50] | 3.150[80.00] | 4.475[113.67] | 3.810[96.77] | 0.197[5.00] | 0.236[6.00] | 46.00[1.811] |



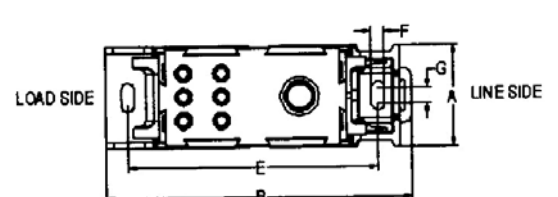
PDBFS204



PDBFS220

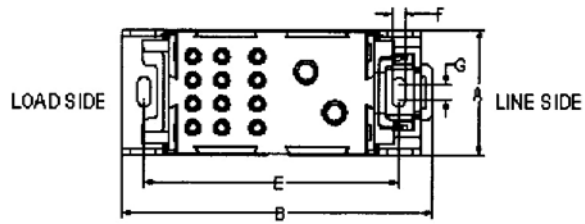


PDBFS303

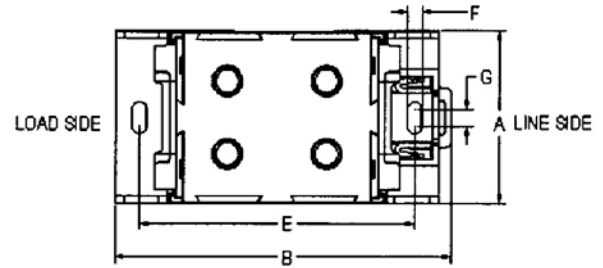


PDBFS330

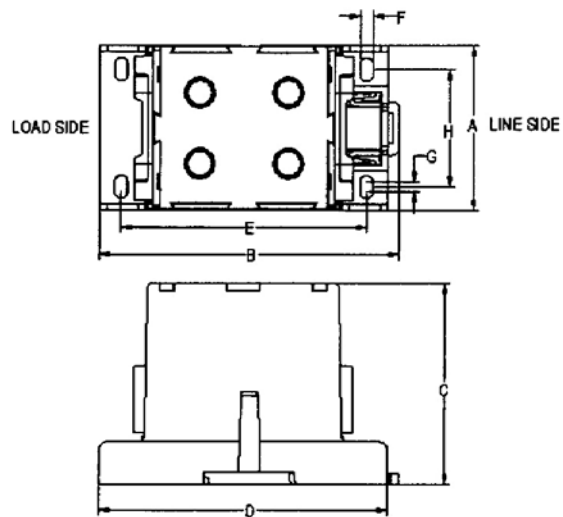
Series PDBFS Enclosed Power Distribution Blocks



PDBFS377



PDBFS500



PDBFS504