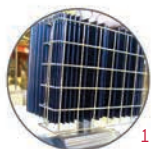


# XB (OCX) Explosion-proof Heater

New codification



## Features

### Voltage

- 120V, 208V, 240V, 480V, 600V, 1-phase.

### Construction

- Unique design.
- Efficient aluminum convector.
- Standard protective grille. **1**
- Low temperature convection.
- Sealed junction box. **2**

### Heating element

- Tubular heating element inserted in an aluminum heat sink. **3**

### Watt density

- Varies according to temperature code.

### Control

- Built-in thermostat available.

### Installation

- Built-in wall support. **4, 5**

### Warranty

- 1-year warranty against defects.

### Application

- Refinery, chemical storage, mining industry.

*Maximum room temperature: 25 °C (77 °F).*

*Consult the Electrical Code in your area before installing this unit.*

# XB

## Models

Watts	Volts	Product #	Temperature Code <sup>2</sup>	Type	L		M		Weight	
					in.	mm	in.	mm	lb	kg
<b>Class I, Division 1, Groups A, B, C and D</b>										
475	120	XB1-1047T2D11	T2D	1	10	254	7 5/16	184	10.0	4.5
1000	120	XB1-4100T2D11	T2D	1	23 7/16	594	7 5/16	184	20.0	9.1
1500	120	XB2-3150T2D11	T2D	2	16 3/4	424	16 1/8	410	30.0	13.6
1000	208	XB1-4100T2D21	T2D	1	23 7/16	594	7 5/16	184	20.0	9.1
1500	208 <sup>1</sup>	XB2-3150T2D21	T2D	2	16 3/4	424	16 1/8	410	30.0	13.6
2000	208 <sup>1</sup>	XB2-4200T2D21	T2D	2	23 7/16	594	16 1/8	410	40.0	18.1
3000	208 <sup>1</sup>	XB3-4300T2D21	T2D	3	23 7/16	594	25	635	60.0	27.2
4500	208 <sup>1</sup>	XB4-6450T2D21	T2D	4	30 1/8	765	33 15/16	860	100.0	45.4
1000	240	XB1-4100T2D31	T2D	1	23 7/16	594	7 5/16	184	20.0	9.1
1500	240 <sup>1</sup>	XB2-3150T2D31	T2D	2	16 3/4	424	16 1/8	410	30.0	13.6
2000	240 <sup>1</sup>	XB2-4200T2D31	T2D	2	23 7/16	594	16 1/8	410	40.0	18.1
3000	240 <sup>1</sup>	XB3-4300T2D31	T2D	3	23 7/16	594	25	635	60.0	27.2
4500	240 <sup>1</sup>	XB4-6450T2D31	T2D	4	30 1/8	765	33 15/16	860	100.0	45.4
1000	480	XB1-4100T2D71	T2D	1	17 3/4	451	7 5/16	184	20.0	9.1
2000	480 <sup>1</sup>	XB2-4200T2D71	T2D	2	17 3/4	451	16 1/8	410	40.0	18.1
3000	480 <sup>1</sup>	XB3-4300T2D71	T2D	3	17 3/4	451	25	635	60.0	27.2
4500	480 <sup>1</sup>	XB4-6450T2D71	T2D	4	30 1/8	765	33 15/16	860	100.0	45.4
1000	600	XB1-4100T2D81	T2D	1	17 3/4	451	7 5/16	184	20.0	9.1
2000	600 <sup>1</sup>	XB2-4200T2D81	T2D	2	17 3/4	451	16 1/8	410	40.0	18.1
3000	600 <sup>1</sup>	XB3-4300T2D81	T2D	3	17 3/4	451	25	635	60.0	27.2
4500	600 <sup>1</sup>	XB4-6450T2D81	T2D	4	30 1/8	765	33 15/16	860	100.0	45.4
<b>Class I, Divisions 1 and 2, Groups A, B, C and D</b>										
<b>Class II, Divisions 1 and 2, Groups E, F and G - Class III, Division 1</b>										
2250	120	XB3-6625T3B11	T3B	3	30 1/8	765	25	635	75.0	34.0
2250	208 <sup>1</sup>	XB3-6625T3B21	T3B	3	30 1/8	765	25	635	75.0	34.0
2250	240 <sup>1</sup>	XB3-6625T3B31	T3B	3	30 1/8	765	25	635	75.0	34.0
2250	480 <sup>1</sup>	XB3-6625T3B71	T3B	3	30 1/8	765	25	635	75.0	34.0
2250	600 <sup>1</sup>	XB3-6625T3B81	T3B	3	30 1/8	765	25	635	75.0	34.0

## Options

Product #	Description	Factory Installed	Kit
XB-T	Single-pole thermostat	✓	-
XB-T2	Double-pole thermostat	✓	-
XB-TM	Explosion-proof wall thermostat, range -18 °C to 40 °C (0 °F to 100 °F): 15A at 600V, 25A at 277V	-	✓

<sup>1</sup> 3-phase model available upon request.

<sup>2</sup> Temperature code: T2D = 215 °C (419 °F), T3B = 165 °C (329 °F).

For any other ratings and risk areas, contact our customer service.

