

Ordering Information

10GXS Category 6A, 4-pair, 23 AWG, Plenum-CMP

Description		Belden Part Number			
Color	Length	Nonbonded-Pair		Bonded-Pair*	
		Spool Package	Reel-in-Box Package	Spool Package	Reel-in-Box Package
Red	305 m (1000 ft)	10GXS13 0021000	10GXS13002A1000	10GXS33 0021000	10GXS33002A1000
Orange	305 m (1000 ft)	10GXS13 0031000	10GXS13003A1000	10GXS33 0031000	10GXS33003A1000
Yellow	305 m (1000 ft)	10GXS13 0041000	10GXS13004A1000	10GXS33 0041000	10GXS33004A1000
Green	305 m (1000 ft)	10GXS13 0051000	10GXS13005A1000	10GXS33 0051000	10GXS33005A1000
Blue	305 m (1000 ft)	10GXS13 D151000	10GXS13D15A1000	10GXS33 D151000	10GXS33D15A1000
Purple	305 m (1000 ft)	10GXS13 0071000	10GXS13007A1000	10GXS33 0071000	10GXS33007A1000
Gray	305 m (1000 ft)	10GXS13 0081000	10GXS13008A1000	10GXS33 0081000	10GXS33008A1000
White	305 m (1000 ft)	10GXS13 0091000	10GXS13009A1000	10GXS33 0091000	10GXS33009A1000
Black	305 m (1000 ft)	10GXS13 0101000	10GXS13010A1000	10GXS33 0101000	10GXS33010A1000

10GXS Category 6A, 4-pair, 23 AWG, Riser-CMR

Description		Belden Part Number			
Color	Length	Nonbonded-Pair		Bonded-Pair*	
		Spool Package	Reel-in-Box Package	Spool Package	Reel-in-Box Package
Red	305 m (1000 ft)	10GXS12 0021000	10GXS12002A1000	10GXS32 0021000	10GXS32002A1000
Orange	305 m (1000 ft)	10GXS12 0031000	10GXS12003A1000	10GXS32 0031000	10GXS32003A1000
Yellow	305 m (1000 ft)	10GXS12 0041000	10GXS12004A1000	10GXS32 0041000	10GXS32004A1000
Green	305 m (1000 ft)	10GXS12 0051000	10GXS12005A1000	10GXS32 0051000	10GXS32005A1000
Blue	305 m (1000 ft)	10GXS12 0061000	10GXS12006A1000	10GXS32 0061000	10GXS32006A1000
Purple	305 m (1000 ft)	10GXS12 0071000	10GXS12007A1000	10GXS32 0071000	10GXS32007A1000
Gray	305 m (1000 ft)	10GXS12 0081000	10GXS12008A1000	10GXS32 0081000	10GXS32008A1000
White	305 m (1000 ft)	10GXS12 0091000	10GXS12009A1000	10GXS32 0091000	10GXS32009A1000
Black	305 m (1000 ft)	10GXS12 0101000	10GXS12010A1000	10GXS32 0101000	10GXS32010A1000

10GXS Category 6A, 4-pair, 23 AWG, LSZH

Description		Belden Part Number			
Color	Length	Nonbonded-Pair		Bonded-Pair*	
		Spool Package	Reel-in-Box Package**	Spool Package	Reel-in-Box Package**
Blue	305 m (1000 ft)	10GXS24 0061000	Available	10GXS44 0061000	Available
Purple	305 m (1000 ft)	10GXS24 0071000	Available	10GXS44 0071000	Available
Gray	305 m (1000 ft)	10GXS24 0081000	Available	10GXS44 0081000	Available
White	305 m (1000 ft)	10GXS24 0091000	Available	10GXS44 0091000	Available

LSZH Available in Q4 2015

*Bonded-Pair available in Q2 2015

** Call for quote

© Copyright 2016, Belden Inc.
10GXS Cables | PB00013 | ECOS_BDC_0116_A_AG

Faster.
Easier.
Better.



10GX UTP System Cable, 10 Gigabit Ethernet, Category 6A

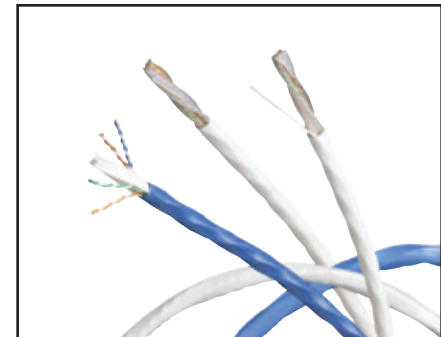
Nonbonded-Pair and Bonded-Pair

The 10GX Cable delivers performance that goes beyond the ANSI/TIA/EIA 568-C.2 Category 6A standard. When used as the horizontal cable within the Belden IBDN 10GX System, it provides 625 MHz of proven channel bandwidth and a data rate of 10 Gigabits per second. This performance is made possible through the innovative RoundFleX™ design that serves to reduce alien crosstalk by randomizing the distance between the cables.

Applications:

- 10GBASE-T Full Power Implementation (IEEE 802.3an)

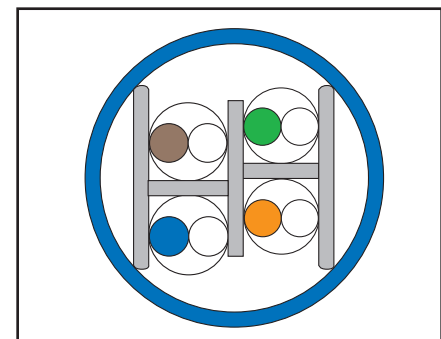
- 10GBASE-T Low Power Implementation (Short Reach Mode) (IEEE 802.3an)
- 1000BASE-T Applications (IEEE 802.3ab)
- Power Over Ethernet Plus - 2 pairs, up to 30 Watts or 4-pairs, up to 60 Watts (IEEE 802.3at)
- Power Over Ethernet - 2 pairs, up to 12.95 Watts (IEEE 802.3af)
- Broadband Video (CATV) & High Speed Internet (DOCSIS) over UTP up to 860 MHz
- High Temperature performance up to 50°C without length de-rating for 1000BASE-T and 100BASE-TX



10GX System Cable

10GX System UTP Cable

Belden Part Number	Color	Length	Packaging	No. of Packages Per Pallet	Total Length Per Pallet
10GX, Nonbonded-Pair, 4-pair, 23 AWG, CMR, Category 6A					
10GX12 0021000	Red	305 m (1000 ft)	Spool	27 spools/pallet	8235 m (27000 ft)
10GX12 0031000	Orange	305 m (1000 ft)	Spool	27 spools/pallet	8235 m (27000 ft)
10GX12 0041000	Yellow	305 m (1000 ft)	Spool	27 spools/pallet	8235 m (27000 ft)
10GX12 0051000	Green	305 m (1000 ft)	Spool	27 spools/pallet	8235 m (27000 ft)
10GX12 0061000	Blue	305 m (1000 ft)	Spool	27 spools/pallet	8235 m (27000 ft)
10GX12 0071000	Purple	305 m (1000 ft)	Spool	27 spools/pallet	8235 m (27000 ft)
10GX12 0081000	Gray	305 m (1000 ft)	Spool	27 spools/pallet	8235 m (27000 ft)
10GX12 0091000	White	305 m (1000 ft)	Spool	27 spools/pallet	8235 m (27000 ft)
10GX12 0101000	Black	305 m (1000 ft)	Spool	27 spools/pallet	8235 m (27000 ft)
10GX12 0041500	Yellow	458 m (1500 ft)	Spool	15 spools/pallet	6863 m (22500 ft)
10GX12 0091500	White	458 m (1500 ft)	Spool	15 spools/pallet	6863 m (22500 ft)
10GX12 0101500	Black	458 m (1500 ft)	Spool	15 spools/pallet	6863 m (22500 ft)
10GX12 0062500	Blue	762 m (2500 ft)	Spool	8 spools/pallet	6100 m (20000 ft)
10GX, Nonbonded-Pair, 4-pair, 23 AWG, CMP, Category 6A					
10GX13 0041000	Yellow	305 m (1000 ft)	Spool	27 spools/pallet	8235 m (27000 ft)
10GX13 0051000	Green	305 m (1000 ft)	Spool	27 spools/pallet	8235 m (27000 ft)
10GX13 D151000	Blue	305 m (1000 ft)	Spool	27 spools/pallet	8235 m (27000 ft)
10GX13 0071000	Purple	305 m (1000 ft)	Spool	27 spools/pallet	8235 m (27000 ft)
10GX13 0081000	Gray	305 m (1000 ft)	Spool	27 spools/pallet	8235 m (27000 ft)
10GX13 0091000	White	305 m (1000 ft)	Spool	27 spools/pallet	8235 m (27000 ft)
10GX13 0101000	Black	305 m (1000 ft)	Spool	27 spools/pallet	8235 m (27000 ft)
10GX13 0101500	Black	458 m (1500 ft)	Spool	15 spools/pallet	6863 m (22500 ft)
10GX13 0042500	Yellow	762 m (2500 ft)	Spool	8 spools/pallet	6100 m (20000 ft)
10GX13 D152500	Blue	762 m (2500 ft)	Spool	8 spools/pallet	6100 m (20000 ft)
10GX, Nonbonded-Pair, 4-pair, 23 AWG, LSZH, Category 6A					
10GX24 0061000	Blue	305 m (1000 ft)	Spool	20 spools/pallet	6100 m (20000 ft)
10GX24 0071000	Purple	305 m (1000 ft)	Spool	20 spools/pallet	6100 m (20000 ft)
10GX24 0091000	White	305 m (1000 ft)	Spool	20 spools/pallet	6100 m (20000 ft)
10GX, Bonded-Pair, 4-pair, 23 AWG, CMR, Category 6A					
10GX32 0041000	Yellow	305 m (1000 ft)	Spool	27 spools/pallet	8235 m (27000 ft)
10GX32 0061000	Blue	305 m (1000 ft)	Spool	27 spools/pallet	8235 m (27000 ft)
10GX32 0081000	Gray	305 m (1000 ft)	Spool	27 spools/pallet	8235 m (27000 ft)
10GX32 0091000	White	305 m (1000 ft)	Spool	27 spools/pallet	8235 m (27000 ft)
10GX, Bonded-Pair, 4-pair, 23 AWG, CMP, Category 6A					
10GX33 0041000	Yellow	305 m (1000 ft)	Spool	27 spools/pallet	8235 m (27000 ft)
10GX33 D151000	Blue	305 m (1000 ft)	Spool	27 spools/pallet	8235 m (27000 ft)
10GX33 0081000	Gray	305 m (1000 ft)	Spool	27 spools/pallet	8235 m (27000 ft)
10GX33 0091000	White	305 m (1000 ft)	Spool	27 spools/pallet	8235 m (27000 ft)
10GX, Bonded-Pair, 4-pair, 23 AWG, LSZH, Category 6A					
10GX44 0061000	Blue	305 m (1000 ft)	Spool	20 spools/pallet	6100 m (20000 ft)
10GX44 0071000	Purple	305 m (1000 ft)	Spool	20 spools/pallet	6100 m (20000 ft)
10GX44 0091000	White	305 m (1000 ft)	Spool	20 spools/pallet	6100 m (20000 ft)



Innovative RoundFleX Design

Faster.
Easier.
Better.



10GX Shielded System Cable, Category 6A

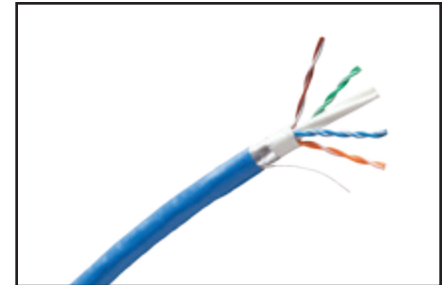
Nonbonded-Pair and Bonded-Pair

This 10GX shielded cable delivers performance that goes beyond the ANSI/TIA/EIA 568-C.2 Category 6A standard. When used as the horizontal cable within the Belden IBDN 10GX Shielded System, it provides 625 MHz of proven channel bandwidth and a data rate of 10 Gigabits per second. With a thick, 100% coverage foil shield, your 10 Gb/s of data is protected from harsh EMI environments.

Adding a shield to a high performance Category 6A cable is not as easy as one would think. Any metallic shield changes the electrical performance of the cable, and if the shield is not smooth, that performance becomes unpredictable. Our design utilizes an inner and outer jacket to sandwich the foil into having a smooth surface. This eliminates adverse PSNEXT and RL effects seen with most other 10G cable products.

Applications:

- 10GBASE-T, and any other Ethernet application in high noise environments (EMI)
- 10GBASE-T Full Power Implementation (IEEE 802.3an)
- 10GBASE-T Low Power Implementation (Short Reach Mode) (IEEE 802.3an)
- 1000BASE-T Applications (IEEE 802.3ab)
- Power Over Ethernet Plus - 2 pairs, up to 30 Watts or 4-pairs, up to 60 Watts (IEEE 802.3at)
- Power Over Ethernet - 2 pairs, up to 12.95 Watts (IEEE 802.3af)
- Broadband Video (CATV) and High Speed Internet (DOCSIS) over UTP up to 860 MHz
- High Temperature performance up to 50°C without length de-rating for 1000BASE-T and 100BASE-TX



10GX Shielded System Cable

10GX Shielded System Cable

Belden Part Number	Color	Length	Packaging	No. of Packages Per Pallet	Total Length Per Pallet
10GX, Nonbonded-Pair, 4-pair, 23 AWG, CMR, Category 6A, F/UTP					
10GX52F 0041000	Yellow	305 m (1000 ft)	Spool	20 spools/pallet	6100 m (20000 ft)
10GX52F 0061000	Blue	305 m (1000 ft)	Spool	20 spools/pallet	6100 m (20000 ft)
10GX52F 0081000	Gray	305 m (1000 ft)	Spool	20 spools/pallet	6100 m (20000 ft)
10GX52F 0091000	White	305 m (1000 ft)	Spool	20 spools/pallet	6100 m (20000 ft)
10GX52F 0101000	Black	305 m (1000 ft)	Spool	20 spools/pallet	6100 m (20000 ft)
10GX, Nonbonded-Pair, 4-pair, 23 AWG, CMP, Category 6A, F/UTP					
10GX53F 0041000	Yellow	305 m (1000 ft)	Spool	20 spools/pallet	6100 m (20000 ft)
10GX53F D151000	Blue	305 m (1000 ft)	Spool	20 spools/pallet	6100 m (20000 ft)
10GX53F 0081000	Gray	305 m (1000 ft)	Spool	20 spools/pallet	6100 m (20000 ft)
10GX53F 0091000	White	305 m (1000 ft)	Spool	20 spools/pallet	6100 m (20000 ft)
10GX53F 0101000	Black	305 m (1000 ft)	Spool	20 spools/pallet	6100 m (20000 ft)
10GX, Nonbonded-Pair, 4-pair, 23 AWG, LSZH, Category 6A, F/UTP*					
10GX54F 0071000	Purple	305 m (1000 ft)	Spool	20 spools/pallet	6100 m (20000 ft)
10GX, Bonded-Pair, 4-pair, 23 AWG, CMR, Category 6A, F/UTP					
10GX62F 0041000	Yellow	305 m (1000 ft)	Spool	20 spools/pallet	6100 m (20000 ft)
10GX62F 0061000	Blue	305 m (1000 ft)	Spool	20 spools/pallet	6100 m (20000 ft)
10GX62F 0081000	Gray	305 m (1000 ft)	Spool	20 spools/pallet	6100 m (20000 ft)
10GX62F 0091000	White	305 m (1000 ft)	Spool	20 spools/pallet	6100 m (20000 ft)
10GX62F 0101000	Black	305 m (1000 ft)	Spool	20 spools/pallet	6100 m (20000 ft)
10GX, Bonded-Pair, 4-pair, 23 AWG, CMP, Category 6A, F/UTP					
10GX63F 0041000	Yellow	305 m (1000 ft)	Spool	20 spools/pallet	6100 m (20000 ft)
10GX63F D151000	Blue	305 m (1000 ft)	Spool	20 spools/pallet	6100 m (20000 ft)
10GX63F 0081000	Gray	305 m (1000 ft)	Spool	20 spools/pallet	6100 m (20000 ft)
10GX63F 0091000	White	305 m (1000 ft)	Spool	20 spools/pallet	6100 m (20000 ft)
10GX63F 0101000	Black	305 m (1000 ft)	Spool	20 spools/pallet	6100 m (20000 ft)
10GX, Bonded-Pair, 4-pair, 23 AWG, LSZH, Category 6A, F/UTP*					
10GX64F 0071000	Purple	305 m (1000 ft)	Spool	20 spools/pallet	6100 m (20000 ft)

*Available on request.

10GX Shielded Field-Terminated System