



1920 Small Light

Our new ultra compact aluminum 1910 and 1920 flashlights are designed with style and function in mind. Using readily available AAA batteries, these bright LED lights create a clean white beam. Long burntimes combined with hi-lumen output make for an efficient lighting tool; the perfect personal light.

CONFIGURATIONS

1920 - Standard

1920M - With Merchandiser 12 units (2 of each color)

DIMENSIONS

Length: 5.50"

MATERIALS

Body: Aluminum with Type II Anodized

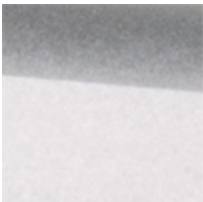
O-Ring: EPDM

Lens: Polycarbonate (PC)

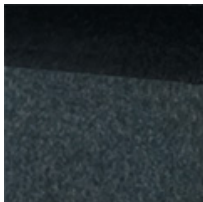
Shroud: Aluminum with Type II Anodized

Clip: High Carbon Steel

COLORS



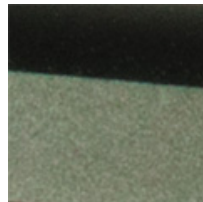
Silver



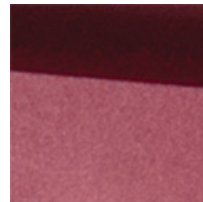
Black



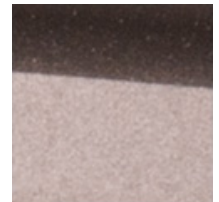
Blue



Green



Red



Gold



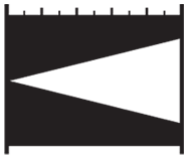


LIGHT SPECS

Lamp Type: LED

FL1 STANDARD

HIGH

LOW

	120 LUMENS	12 LUMENS
	2.75h	8.50h
	87m	27m
	1893cd	184cd
	IPX7	

POWER

Battery Size: AAA
Battery Type: Alkaline
Battery Quantity: 2
Batteries Included: yes
Volts: 3.0v

WEIGHT

Weight With Batteries: 2.20 oz
Weight Without Batteries: 1.40 oz

SWITCH

Switch Type: Momentary Push Button
Light Modes: On /Off / Momentary

OTHER

Minimum Pack: 6

Pelican Products, Inc.

23215 Early Ave • Torrance, CA 90505 USA • Phone: (310) 326-4700 • (800) 473-5422 • Fax: (310) 326-3311
sales@pelican.com • www.pelican.com